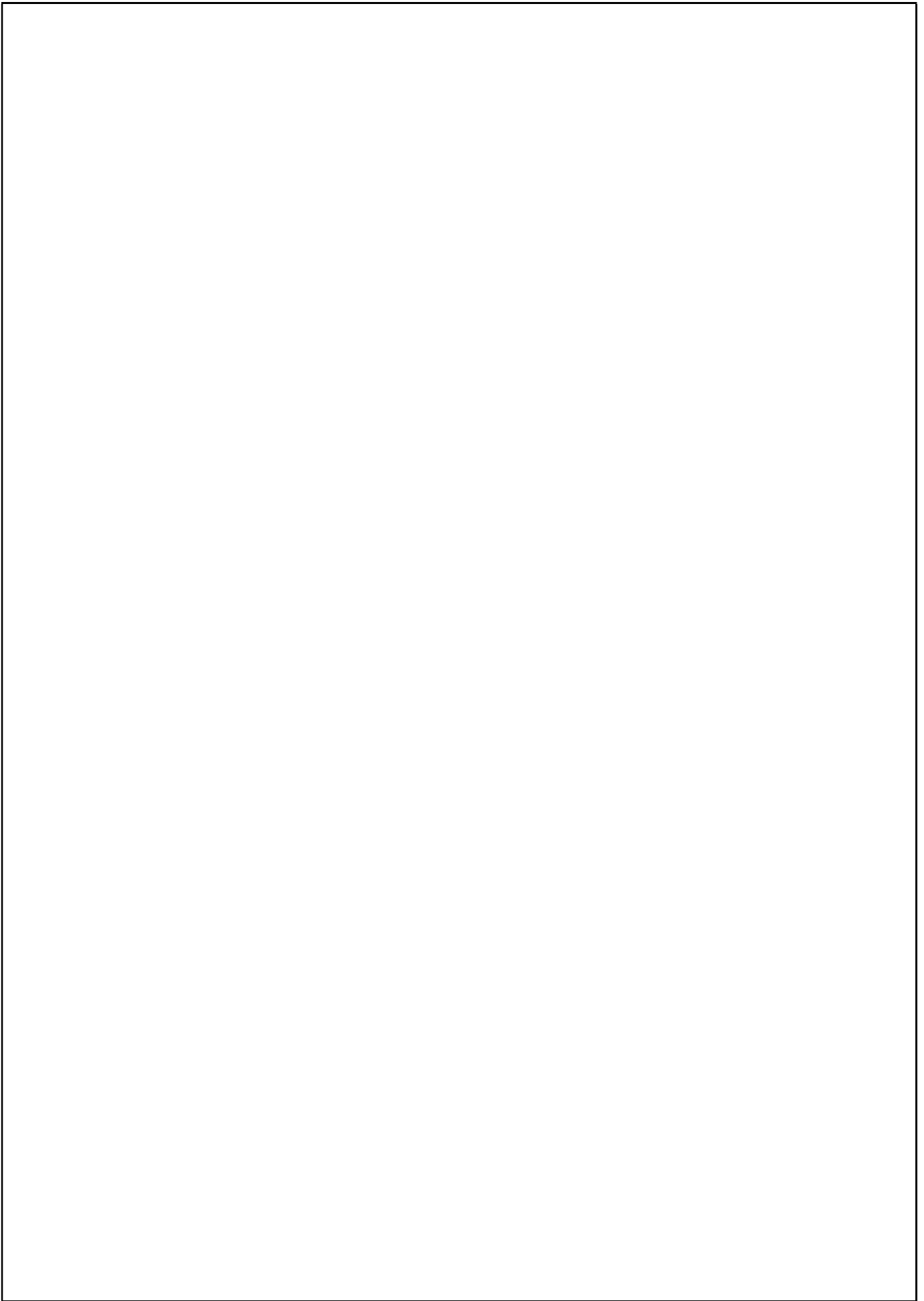


**The Brihanmumbai Electric Supply  
and Transport Undertaking  
(Of The Brihanmumbai Mahanagarpalika)**

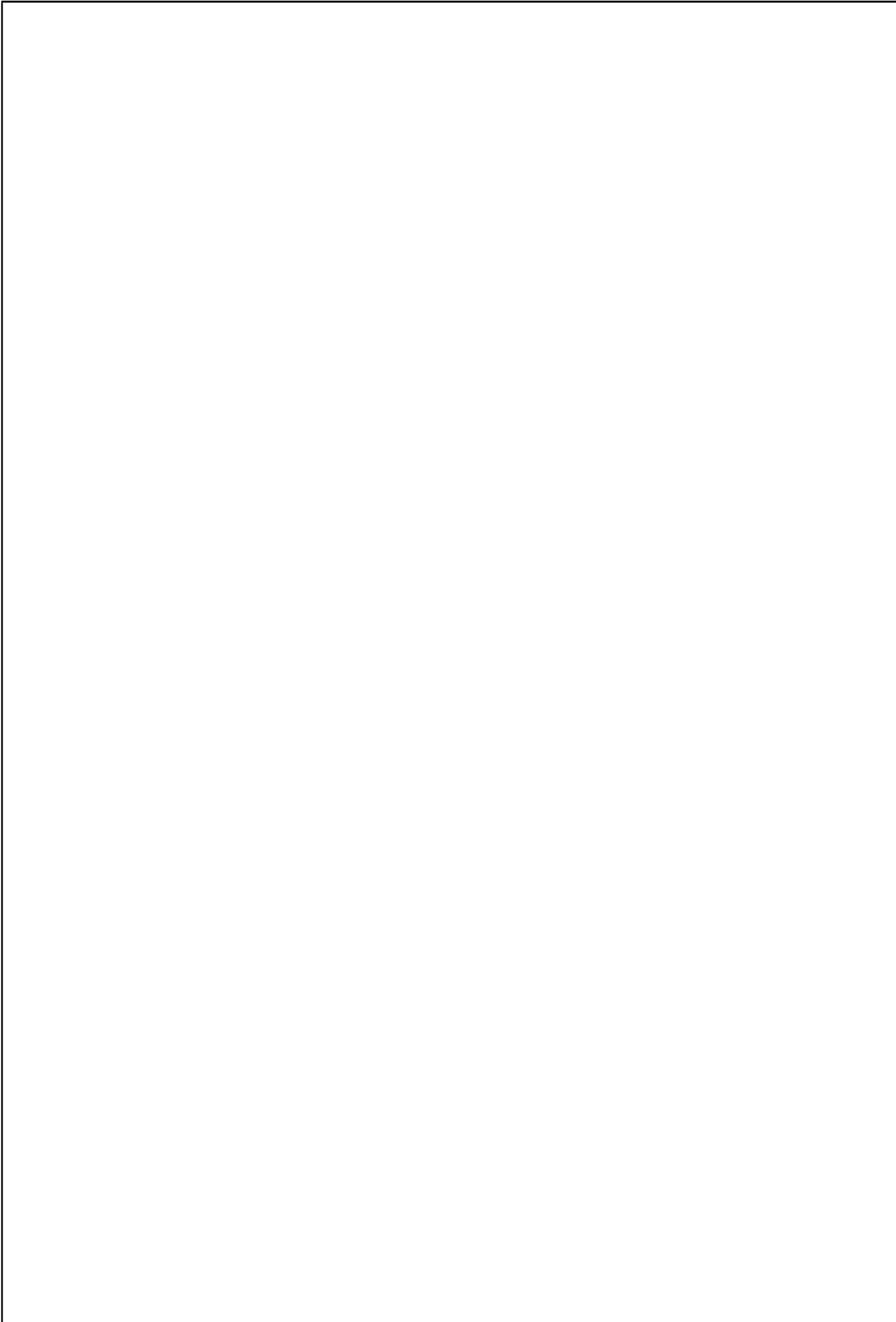


**DISASTER MANAGEMENT PROTOCOL**  
**BOOKLET 2024 – 2025**  
**(Electric Supply Division)**



## INDEX

<u>Sr. No.</u>	<u>Description</u>	<u>Annx.No.</u>	<u>Page No.</u>
1	Introduction	--	1 to 13
2	Operations & Maintenance Zones & MCGM Wards Map of Mumbai	I	14
3	Map showing power supply arrangement for BEST Undertaking	II	16
4	List of officers of Operations & Maintenance Division	III	18 to 20
5	'A' Grade officers ( 'A – 4' & 'A – 5' ) residing in our area of supply	IV	21
6	List of Essential feeders	V	22 to 34
7	Booking of 'A' & 'B' Grade officers at various receiving stations during emergencies / Disaster of large magnitude	VI	35 to 36
8	Electric Supply – Address & Telephone Numbers of Senior Officers ( Grade 'A – 3' & above )	VII	37 to 44
9	Address and Phone nos. of Receiving Sub-Stations	VIII	45 to 49
10	Ward Wise Identified Low Lying Flooding Prone Areas	IX	50 to 52
11	The reporting protocol for interruption of Electric supply due to System Failure / Disaster	--	53 to 54
12	Off Supply Complaints Operations & Maintenance Division	--	55
13	Customer Care Division (Complaints ) Street Lighting (Complaints )	--	56



Brihanmumbai Electric Supply and Transport Undertaking (BEST) distribute electric supply within the old city limits of Mumbai and runs Public Transport in the Greater Mumbai region. This write up is about the Disaster Management Plans for the Electric Supply Distribution.

## 2. **Introduction :**

BEST receive power from State Transmission Network through M/s. Tata Power Transmission Company at 110 kV, 33 kV or 22 kV and distributes the Energy from Colaba to Haji Ali / Byculla / Mumbai Central in South Zone and Mumbai Central / Byculla / Haji Ali to Sion, Chunabhatti / Mahim in North zone as shown in **Annexure – I.** A map showing the power system arrangement is attached as **Annexure –II.** The statistical data of Receiving Substations, Distribution Substations, Cables & Consumers etc. in Electric Supply Division as on 31<sup>st</sup> March 2024 is as follows :-

<b>Description</b>	<b>Numbers</b>
Nos. of Receiving Substations	65
Nos. of Power Transformers	155
Nos. of Distribution Substations	2536
Nos. of Distribution Transformers	3470
Length of Cable ( EHV / HV / LV) in kms	12545
Nos. of Consumers in Lacs	10. 53

To avoid failure of electric supply even for few minutes, BEST has evolved very systematic and time-tested procedures and arrangements for attending to all types of breakdowns.

It is our experience that major floods occur in Mumbai once or twice in Monsoon Season, when innumerable breakdowns occurs. In such cases, we divert officials from other non-emergency departments to deal with the situation. The BEST operation and maintenance system is capable of dealing with the increased breakdowns, though the restoration of supply takes some more time during disaster situation such as flood & fire

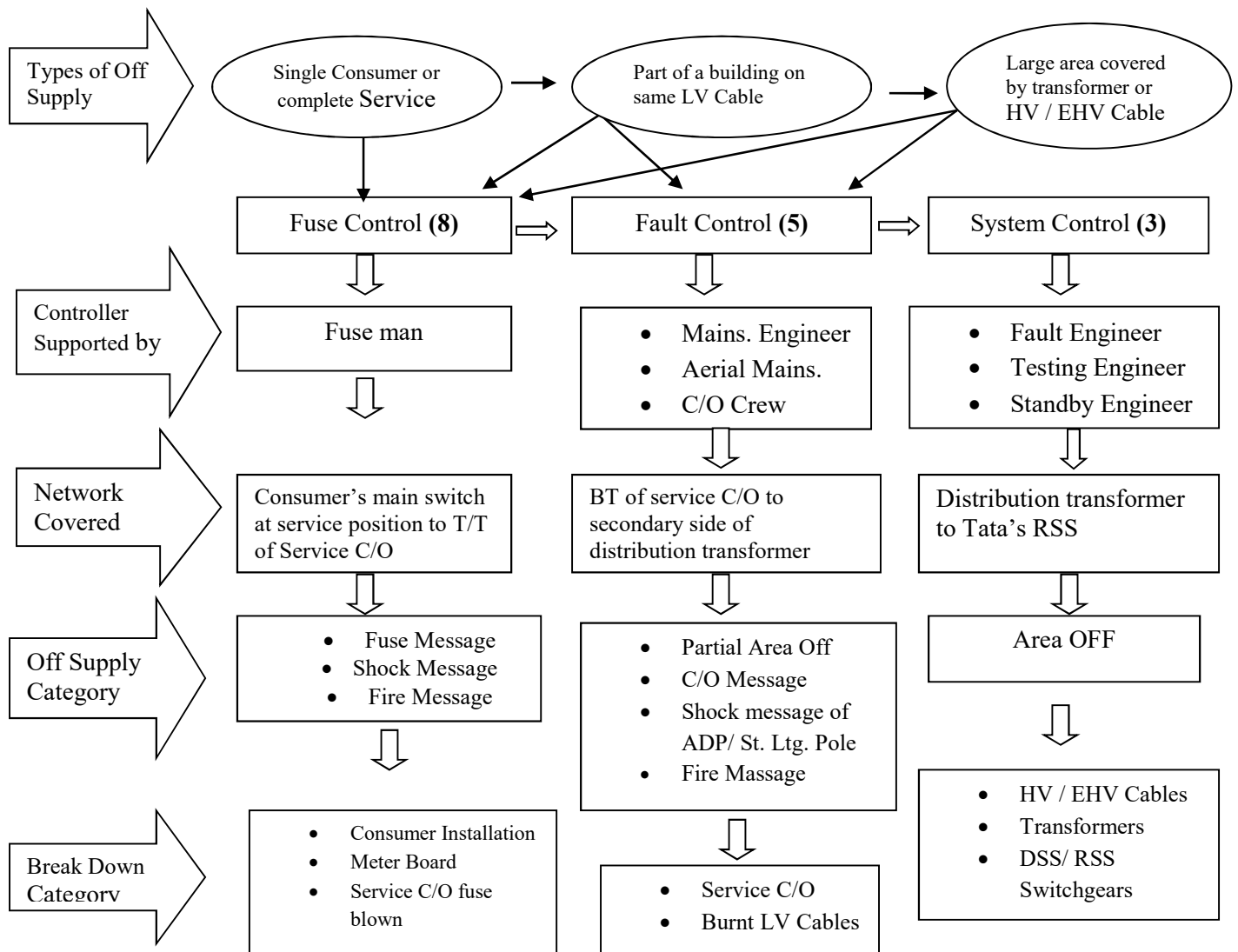
situations. Also, in cases such as floods, fire etc. there is contradictory requirement of switching off supply to the areas affected by floods, shocks, fire etc. and restoring supply when these conditions subside. Hence the nature of actions to be taken varies from situation to situation, and calls for discretion and judgment by experienced engineers. With the present set up of control centers and operating personnel with vehicles, BEST is in a position to deal with these situations, if necessary by diverting additional staff from non-emergency departments. This is possible, because Electric Supply Branch ensures that all the technical personnel are trained for emergency jobs, by a flexible transfer policy.

For enabling the control centers to arrive at the correct decision on action, it will be highly beneficial if the consumers are in a position to give information on the extent of supply failure, i.e. whether individual complaint or only their building is affected, or more buildings are affected or the entire area is affected. If the consumer gives wrong information, it may delay the restoration, as the different section personnel may get deployed for the job initially. In case of tripping in Receiving stations, the controls automatically gets information through the SCADA system, and Fault Engineer will move into action.

### 3.0 Co-ordinated functioning of various Control Rooms for faster restoration of Electric Supply

We have three types of Control Rooms viz. System / Supervisory Controls, Fault Controls and Fuse Controls. The schematic showing the movement of OFF Supply messages through these Control Rooms, to the respective sections which have to take actions for restoration of supply, is as follows :-

#### Co-ordinating functioning of various Control Rooms for faster restoration of Electric Supply



From the operational point of view, the Operation & Maintenance department of the Electric Supply Division of BEST is divided into five Zones viz. South Zone, Central South Zone, North West Zone, North East Zone and Central North Zone.

The main control rooms of Electric Supply Division are divided mainly into 3 controls, i.e. System Control in South zone covering the entire operations of the South & Central South zone from Colaba to Mumbai Central / Byculla / Haji Ali and Supervisory Control in North zone covering the entire operations of the North West , North East i.e. Haji Ali to Chunabhatti / Mahim / Wadala / Sion & Zonal Control Center (ZCC) covering the entire operations of Central North zones i.e. from Byculla / Haji Ali / Mumbai Central to Lalbaug -Worli, Byculla. These three are the highest Control Centers, but as a routine, they look after only High Voltage system operations / breakdowns and reporting to management on all aspects of the system by taking input from other controls downstream.

These Controls are manned by the Super Controller (Superintendent / Asst. Engineer) / System Controller & Supervisory Controller (Dy. Engineers) respectively. They are assisted by Assistant Controllers (Charge Engineers). Both the Controller & Assistant Controller working in all the three shifts round o' clock. System / Supervisory & Zonal Control Center Controller mainly deals with the communication with the Fault Engineers and Mains Engineers and reporting to Sr. Officers. Controller / Asst. Controller are carry out the duties of receiving messages, writing messages, computerized reports and follow up with the operational staff and taking feedbacks. The Offices of Operation & Maintenance Departments are situated nearer to these Control Rooms in both the zones.

For restoration of Electric Supply, we have 8 (eight) fuse Controls, 5 (Five) Fault Controls and 3 (Three) System / Supervisory / Zonal Control Centers established and all details along with locations and telephone nos. are furnished.

All types of emergencies involving Receiving Sub-stations and Distribution Sub-stations are conveyed to the Fault Engineers working in all the three shifts through System Control, Supervisory Control & Zonal Control Center.



All other breakdowns and problems in the low voltage systems like supply failures, shock, fire, restoration of the off supply areas by giving temporary supply etc. are attended by Mains Engineers who are deployed through Fault Controls in all the three shifts. The Fuse Control deploys Fuse men who can attend to supply failures due to blowing of fuses at meter rooms of the consumers, and problems connected with meters. They also take action in case of fire, shock, water falling at Service position etc. on the meter boards and in the installation. All the control rooms have the system of lodging all the messages received and feedback of attending the message is also recorded in the respective controls. There is a system of reporting all the major messages to the senior officers of the Electric Supply Branch, every morning and also during the working day and holidays round the clock.

For cases of OFF Supply durations exceeding 2 hours, there are well defined instructions for escalating the matter to senior officers, which are as follows :-

<b>OFF Supply Duration</b>	<b>Escalation</b>
2 to 4 Hours	Concern Assistant Engineer / Superintendent Engineer of respective Operation & Maintenance Department
4 to 6 Hours	Divisional Engineer of respective Operation & Maintenance Department
Above 6 Hours	Deputy Chief Engineer of respective Operation & Maintenance Department & other Senior Officers

The telephone numbers of various control centers, for electric supply restoration and emergency messages jobs of BEST, are given below. The last 4 digit numbers of these control centers are unique and hence can be remembered easily by contacting personnel.

**South Zone: ( Colaba to Mumbai Central / Byculla / Haji Ali)**

<b>South Control</b>		22083788, 22085888, 22078865, 7304456077 7208836123, 992031588, 8828830281 (WhatsApp)
<b>Fault Control Pathakwadi (S/CS)</b>		22066611, 22066661, 22087234, 7208964081, 7304456078, 8097585149 (O/I), 8828847561(WhatsApp) 8828871642 (SMS/Missed Call)
<b>Fuse Control</b>	<b><u>Pathakwadi</u></b>	22084242, 22084243, 22066351, 8097585140 (O/I), 8828847565 (SMS/ Missed Call)
	<b><u>Colaba</u></b>	22184242, 22156749, 22156748, 9029194242 , 7208964084 8828871649 SMS/ WhatsApp)
	<b><u>Masjid</u></b>	7304456089, 23454297, 23474242, 23474010, 8828871650(WhatsApp)
	<b><u>Tardeo</u></b>	23094242, 23018169, 23099686 , 8828871647, 72089464092, 9920474242

**North Zone: ( Parel/ Worli/ Haji Ali/ Sewree to Sion Chunabhatti/Mahim/Dharavi)**

Supervisory Control		20295888,24186200, 24145888, 24123285,7208992923,7208992904, 7304456079, 8828830288, (Whatsapp)	
Fault Control	<b><u>Dadar (N/E)</u></b>	<b><u>New Mahim (at Mahim RSS) (N/W)</u></b>	<b><u>Dharavi (at Dharavi Bus Depot)</u></b>
	24146611	24326611, 24326612,	
	24146683	24326613	
	8657024238	8657004681	8657448059
	9029126611	8657004682	8097585485
	9920156611	8657024227	7208934744
	9920356611	9920436641	8828871651
	8828830283 8828871656 (Whatsapp),	9029106611 8828847562 (Whatsapp),	(Whatsapp)
Fuse Control	<b><u>Dadar</u></b>	24124242, 24123162, 24124993 8828847563 (Whatsapp)	
	<b><u>Mahim</u></b>	9920654242, 9029134242 , 24444242 , 8657859186 8657448061,8828871657 (Whatsapp)	
	<b><u>Worli</u></b>	24954242, 24953363, 9920664242 , 9029154242 , 24314242 , 8657004674 , 7208964094 ,7208835904 , 8828847567 (Whatsapp)	
	<b><u>Suparibaug</u></b>	24114242, 24161217, 24117736, 24117732, 24117734, 24117731, 8097585159, 8097585159, 8828871641 (Whatsapp), 8828871655(WA) 8828871641 (Whatsapp), 8828871655(Whatsapp)	

**Central North Zone : (Byculla / Haji Ali / Mumbai Central to Lalbaug / Worli)**

<b><u>Zonal Control</u></b> <b><u>Central North ZCC (CN)</u></b>	24145888 , 24186611 ,24117753, 24117754, 24907007 7208992927, 8828847568 (Whatsapp) ,	
<b><u>Fault Control</u></b> <b><u>Worli (CN)</u></b>	24186611, 24117754, 24117753 , 24907007 9029136611 , 8828847568 (Whatsapp)	
<b><u>Fuse Control</u></b>	Worli	24954242 ,24953363 , 9920664242 , 9029154242 8828847567
	Suparibaug	24114242, 24161217, 9920414242 , 24117732 24117734 , 24117736 , 24117731 , 7208940662, 8828871641 (Whatsapp) 8828871644 , (Whatsapp)
<b><u>BEST Twitter Account</u></b>	@ my BEST Electric	

**4.0 Contingency Plans for major failures:**

The Contingency Plans for faster restoration of electric supply in case of all the EHV feeders and Power Transformers, showing the network operations to be carried out, are well documented and are being updated time to time.

In case of major failures brought about by man-made or natural disasters, the priority will be for safe guarding the Distribution System to prevent shock, fire, etc. by switching off and isolating switch points wherever required, and restoration of supply to essential consumers like hospitals and municipal pumping station. A list of such essential feeders / consumers is attached as **Annexure – V.**

**5.0 Preparations prior to Monsoon Season:**

As a precautionary measure, prior to start of the monsoon season the various activities are being carried out by Operation & Maintenance Department, in order to safeguard the Receiving Substation (RSS) and Distribution Substations (DSS) and the equipments therein. The list of such activities is given below:-

i) As regards the ADP's, Distribution Transformers, Distribution Sub Stations and Receiving Sub Stations in low lying flooding areas.

a) We have identified flooding prone areas and roads in our area of supply. In such areas when water level rises, electric supply is disconnected selectively in order to avoid loss of life due to electrocution. In this situation, continuous monitoring of water level is being done by our Controls in co-ordination with MCGM and Fire Brigade.

b) After the water level recedes, electric supply to such areas is being restored in a gradual manner. List of identified low lying flooding prone areas is attached vide **Annexure- IX.**

In case of dilapidated substations which require repairs, are monitored continuously and in case of substation failure, alternate arrangements of supply restorations are made.

ii) Roof cleaning of RSS and DSS.

iii) Inspection of storm water drains of RSS and letters to MCGM for cleaning the same, if necessary.

iv) Inspection of DSS where in previous year the problem of water leakages were observed and inform the same to Civil Engineering Department of the Undertaking.

v) Provision of tarpaulin, Backlit sheets above the equipments wherever necessary.

vi) Providing heaters in RSS where there is a problem of moisture absorption in the bus bar compartment of switchgears, to avoid flashover.

vii) Advertisement in the local newspapers for precautions to be taken during the monsoon season of their installations and service position and the necessary information regarding the contact personnel about the registering the complaints to controls in their respective areas.

## 6.0 **Stand-by arrangement of officers for emergency duties:-**

The Electric Supply Division is presently headed by Assistant General Manager (Electric Supply). He reports to the General Manager of the Undertaking. AGM (ES) is assisted by 4 Chief Engineers viz. Chief Engineer (Maintenance & Works), Chief Engineer (Customer Care), Chief Engineer (Regulatory) & Chief Engineer (Planning). Most of the technical personnel in Electric Supply Branch get trained for emergency and maintenance activities. All the Senior Officials of Electric Supply branch of BEST, especially those heading the Operation and Maintenance Departments under them, are available for assistance for round the clock and as we say in BEST, "all officers are on duty for 24 hours". The names and telephone numbers of officers of Operation & Maintenance departments, directly concerned with the restoration of supply in case of breakdowns and emergencies, are given in **Annexure – III.**

The Names and Telephone nos. of 'A' Grade Officers, who reside in City limits are given in **Annexure – IV.**

The Electric Supply Division is also having a plan for posting the officers in Grade 'A-4' and 'A-5', in addition to the officers posted at various Receiving Substations for 24 hours in case of emergency. The list of such 'A' & 'B' Grade officers is given in **Annexure –VI.** Telephone numbers of all the Senior Officers from AGM (ES) to Divisional Engineers are given in **Annexure – VII.** The list of Receiving Substations with phone numbers is given in **Annexure – VIII.** The ward wise identified low lying flooding prone areas are given in **Annexure – IX.**

### 7.0 Co-ordinating Officers at MCGM Control Room in case of Disaster:

The co-ordinating officer who will report to Disaster Management Control (DMC) Room of Municipal Corporation of Greater Mumbai at their Headquarters and who will be coordinating with BEST Officers, are as follows:

<b><u>DISASTER CONTROL BOOKING – 2024</u></b>				
<b><u>Co-ordinating officers :</u></b>				
Sr.No	Name	Designation	Department	Office Nos. / Mobile No
1.	Shri. B. S. Kamble	Asst. Engr.	Customer Care 'B' Ward	9869034874 22799541
2.	Shri D.R. Chormale	Asst. Engr.	Construction	9867998639 24165188
3.	Shri T.N. Shekokar	Asst. Engr.	Erection (S)	9967538721, 23711943 Ext. 701
4.	Shri. S.R. Deshmukh	Asst. Engr.	Customer Care 'D' Ward	9987096135 23026803
5.	Shri. A.B.Shinde	Supdt.	Kussara (Workshop)	9869454302

### 8.0 Protocol for activating Disaster Management Plan:

It can be seen that BEST is an organization well prepared to meet all types of emergencies. One can be sure that Electric Supply Wing of BEST will carry out whatever is expected of it, as dictated / compelled by the nature of the disaster and the needs of the situation.

The message received from the Disaster Management Control Room of MCGM or from any other agency to the System/Supervisory Control & Zonal Control Center will be conveyed immediately to the Operational Staff for their action and to the Senior Officers of Electric Supply Division. The details of message and timing of receipt of message will be lodged in respective Control Rooms.

Depending upon the nature of emergency such as fire, flood, collapse of dilapidated building due to heavy rain etc., the Fault Engineers, Mains Engineers, will rush to the sites and the 'A' Grade Officers in-charge as mentioned in **Annexure –IV** will take charge of the situation at site for giving necessary instructions to the staff. The main function of this staff at site is to switch off the electric supply of the affected areas in order to avoid the further damages. The Officers at site, i.e. Fault engineers, Mains engineers will be always in co-ordination with the respective Control Rooms with wireless sets fitted in vehicles, static Wireless sets in Control Room, walky-talky etc. Depending upon the severity of incidence, the emergency officers mentioned in **Annexure-VI** will be booked at the respective RSS, fault controls and fuse controls for co-ordination with the operating staff and the consumers.

During the emergency the System Control Room in South zone and Supervisory Control Room in North zone will be headed by the Dy. Chief Engineer (Distribution South) and Dy. Chief Engineer (Distribution North) respectively who will have the overall control over the Control Rooms and operation of the staff. They will be also in contact with the Police, Fire brigade and MCGM authorities for their help. The Divisional Engineers of non-emergency department like Erection, Construction divisions will have a monitoring role during the emergency over the operations of the staff under their divisions. The vehicles of these divisions will also be utilized for emergency duties after attending the emergencies; the necessary feedback will be given by Operational Staff to the Control Room, which will be conveyed to all Senior Officers of Electric Supply Division and the General Manager. The next step will be the restoration of the electric supply, whenever the situation is normalized.

## 9.0 **Communication**

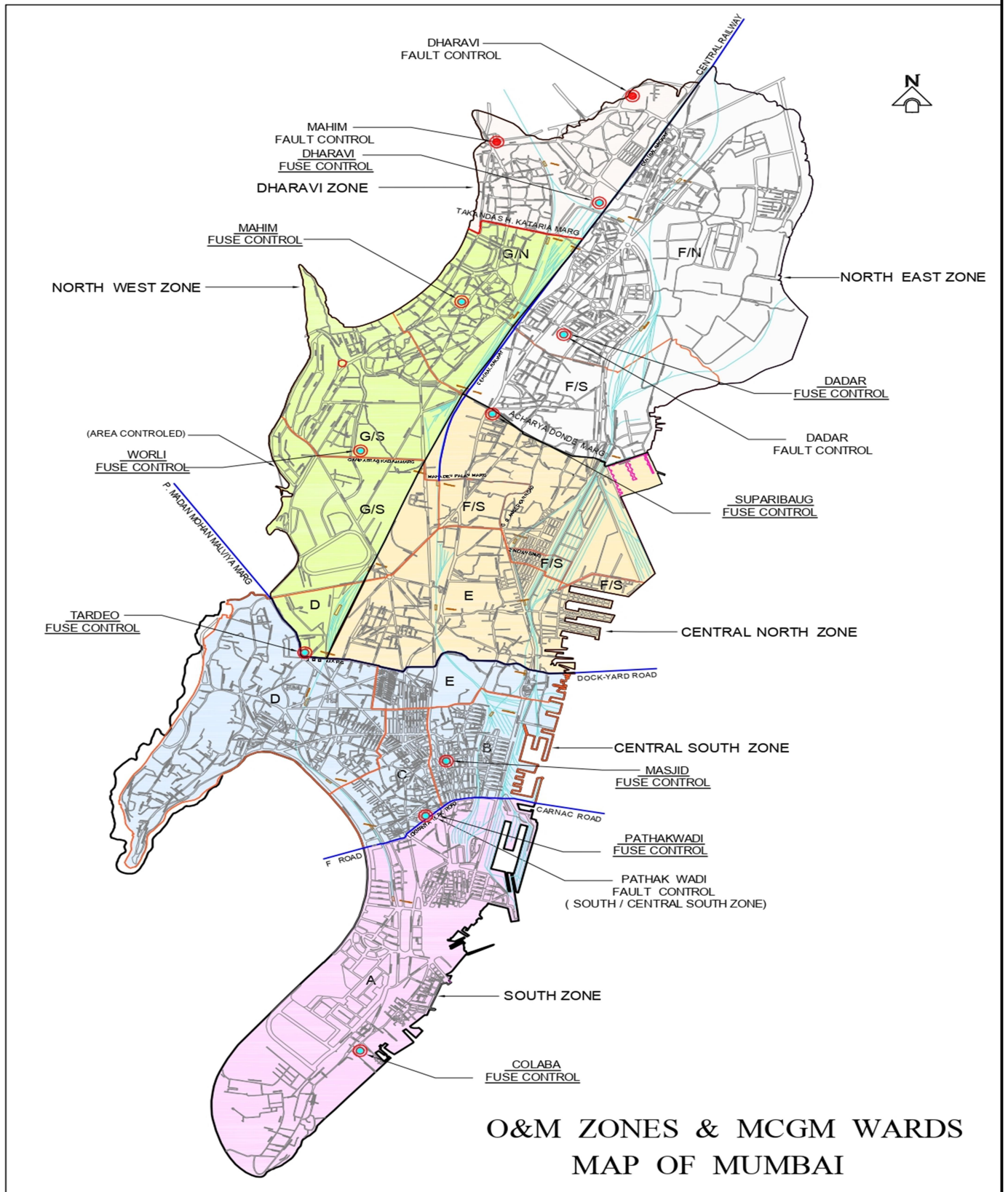
Communication is one of the important aspects in any Disaster Management. All the 65 RSSs are provided with MTNL Telephone Lines. The Supervisory Control, System Control, Zonal Control Center & Fault Controls are provided with MTNL, Tata telephone lines, the static wireless sets and hot lines. The emergency vehicles are fitted with wireless sets. Walky-talky sets are also provided to Fault Engineers.



## 10.0 **Redundancy**

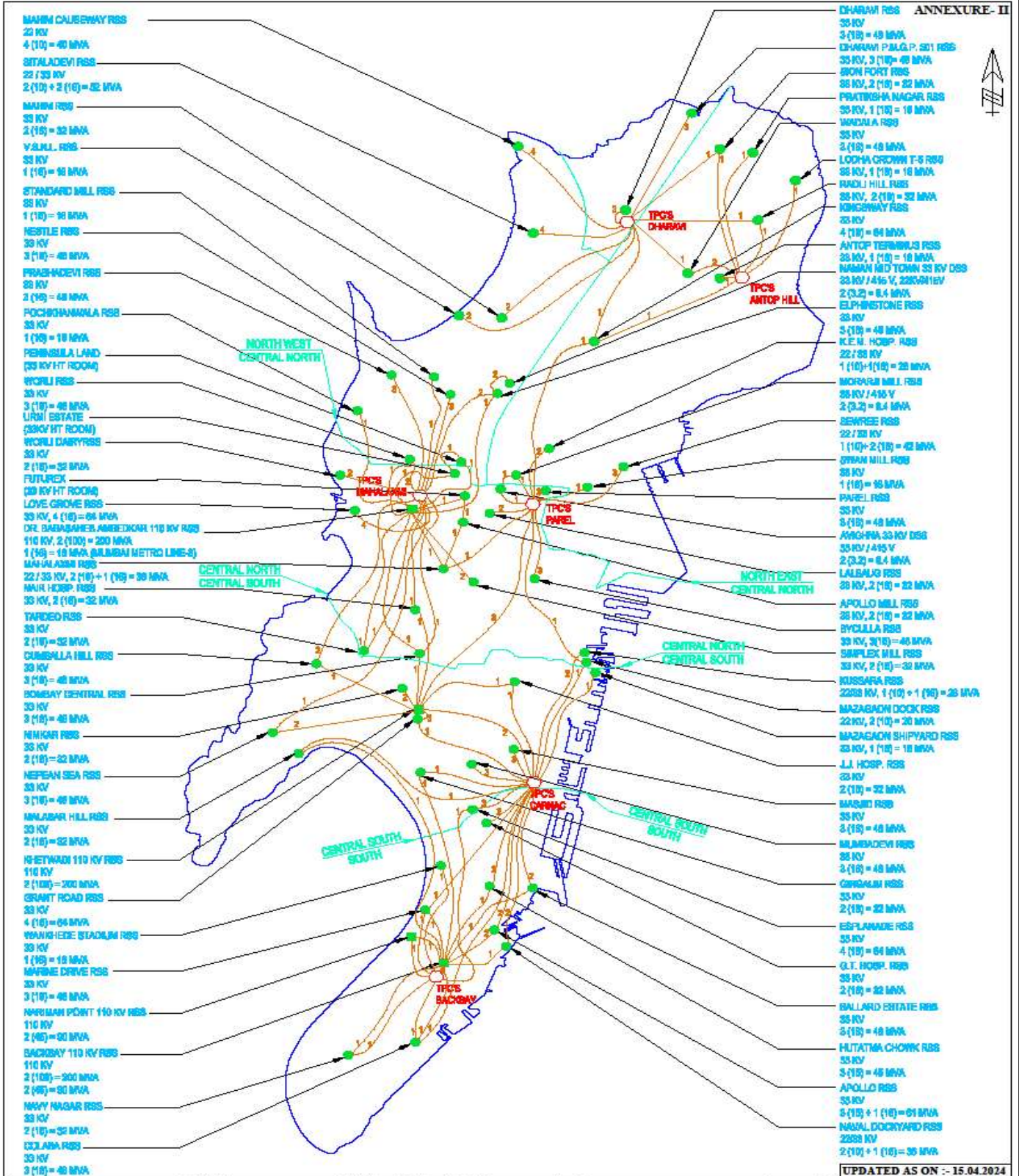
The redundancy in the electrical system is required to be built so that enough spare capacity is available whenever there is a non-availability of equipment and cables, due to faults or outages due to normal maintenance. The Electric Supply Division has its norms well defined in order to maintain the reliability of the Electric Supply. The sufficient redundancy is provided in HV / LV networks in order to transfer the loads and to minimize interruption of supply. This is achieved by the optimum loading of distribution and power transformers keeping down the low distribution loss. The Electric Supply division is also maintaining the sufficient stock of various equipments, which are being utilized in case of emergency for replacement of faulty equipments for distribution of electricity to the consumers. Depending upon the consumption level, the tenders are invited for procurement of various types of equipments annually or biennial.

However, in the event of any tripping of Tata Power Generating Units or failure of any EHV Transmission Lines feeding BEST's Distribution Network in Island City of Mumbai, there may be electricity supply failure in the BEST's area of supply for certain duration.





# ANNEXURE-II



<b>LEGEND :</b> ● BEST EXISTING 220 KV REC. SUB-STN. ● BEST EXISTING 110 KV REC. SUB-STN. ○ TPC'S 110 KV REC. STN.		DRNBY : DESIGNED BY : A.P. GORE APPRO. : M.P. MANMATH	SPRO : SUPERVISOR : M.K. DHARME CEPL : M.P. MANMATH	DRG. NO. : SK / PRO (2010) 11 SCALE : N.T.S. DATE : 25.02.2010	TITLE : <b>MAP SHOWING POWER SUPPLY ARRANGEMENT FOR B.E.S.T.</b>	UPDATED AS ON :- 15.04.2024 <b>PROJECT DEPARTMENT</b> <b>THE B.E.S.&amp;T. UNDERTAKING</b> 2 <sup>nd</sup> Floor, Backbay Veej Bhavan, Plot No.- 149/150, General Jagannath Bhosale Marg, Mumbai- 400 021.
---	--	---	---	---	---	--

D:\B1 DRAWING OFFICER GENERAL C-PROG-PRO (2010) 11 (SUPPLY OF BEST) PTD 15/04/2024 FOR BULLETIN-2024.JOB



**ANNEXURE - III**

**List of Officers in Operation & Maintenance Divisions**

Name	Designation	Telephone No		Responsibility
		Mobile	Office	
Chougule N.N.	CEM	9969324485	22840942 22856262 Extn. 502	In-charge of Distribution of South & North Division
Gunjal P. D.	DCE ( DN )	9920472348	24194503	In-charge of overall control of HV/LV distribution of all North Zones. In charge of liaison with police control, fire brigade and MCGM authorities for necessary help
Fulpagare S.V.	DCE ( DS )	9869870154	22013635	In-charge of overall control of HV/LV distribution of all South Zones. In charge of liaison with police control, fire brigade and MCGM authorities for necessary help
<b>Operation &amp; Maintenance South</b>				
Kurade V.U.	DEMS	9869065499	22154428 22153486	In-Charge of South Zone
Vacant	SMS1	-	-	--
Qadri S.M.	SMS 3	9869451801	22153486	Static-I , Static-II & Departmental Store
Surti H.G.	AEMS 2	9029219435	22153486	Asset Management,, Fault Control, L.V.Supply Restoration. L.V.Load & L.V. Scheme Preparation, RSS Maintenance and Manning
Adangale A.S.	AEMS 3	9503193737	22153486	HV Supply Restoration, Testing & Permanent Repairs, Pillar Maintenance, 110kV RSS Maintenance and Manning

Name	Designation	Telephone No		Responsibility
		Mobile	Office	
<b>Operation &amp; Maintenance Central South</b>				
Narkhede P.S.	DEMCS	9969878588	7208972483	In-Charge of Central South Zone
Zope R.B.	SMCS 1	8779376948	7208972489	Static-I, L.V.Loads, Scheme Preparation, MERC, Asset, LV & Planning related proposals clearances
Daberao K.R.	SMCS 2	9867164895	7208973132	L.V.Supply Restoration, Temp. Supply, M.V. Driver Section & Consolidated Temp. O/H wire MIS of all O & M, Static II
Khan A.A.M.S.	SMCS4	9870854415	--	H.V. Supply Restoration, System Control, Testing, RSS & Khetwadi 110 kV RSS
Sawant A.V.	SMCS5	9987505779	7208972478	Repairs, Pillar Maintenance, Outsourcing
<b>Operation &amp; Maintenance Central North</b>				
Kamble M. S.	DEM CN	9757092063	24121740 24120301	In-Charge of Central North Zone
Vacant	SMCN1			
Suryavanshi S.D.	SMCN2	7506692505	24121740 24120301	RSS Maintenance & HV Supply Restoration, Zonal Control Central North (ZCC)
Bhise V. R.	AEMCN	8879444680	24121740 24120301	Permanent Repair, U/G Cable Testing, Scheme Execution & Pillar Maintenance
Mali V. R.	AEMCN3	9702952979	24121740 24120301 7208972445	L.V. Supply Restoration, arrangement of Temporary Supply, Scheme Preparation & Fault Control ,

Name	Designation	Telephone No		Responsibility
		Mobile	Office	
<b>Operation &amp; Maintenance North West</b>				
Patil S.V.	DEMNW	7710926167	7208940968	In-Charge of North West Zone
Vacant	SMNW 1			HV supply restoration, RSS maintenance & DBA 110 kV RSS
Vacant	SMNW 2			Testing Section & Over all in-charge of Supervisory Control * Additional Charge of HV Supply Restoration ( Prabhadevi & Dharavi Zone )
Vacant	SMNW 3	7710926167	24145888	Static I & II and Vehicle Arrangement
Wayal N.M.	SMNW 4	8097016868	7208940568	Overall In Charge of Dharavi Cell, Scheme preparation, LV supply restoration section, Temporary Supply, Dharavi Fault Control
Deshmukh S. R.	AEMNW 1	9082727482	7208940367	Permanent Repairs & Scheme execution. (Prabhadevi Zone)
Koyande A. R.	AEMNW 2	8779505006	8097562072	Permanent Repairs Section, Dharavi, kalakilla Chowkey, SIMHA-97 & Scheme Execution
Vacant	AEMNW 3		--	LV Load, Mains Engineer, Temp. Supply, Mahim Fault Control, Scheme preparation (Prabhadevi Zone) * (Additional charge of R&M RSS and DBA 110KV RSS )
Dixit R. A.	AEMNW 4	8087820362	--	Pillar maintenance, Maintaining Inventory & Safety Cell Committee, Dept. MIS
<b>Operation &amp; Maintenance North East</b>				
Joglekar S.D.	DEMNE	9869035537	---	In-Charge of North East Zone
Salve M. M.	SMNE 1	9820591251	8097585073	RSS R&M, HV Supply Restoration, Departmental MIS & SOP
Kamble R.K.	SMNE 2	9773326033	--	Static I, Static II, Monthly & Fortnight Statistical Data & RTI First Appellate Authority
Vaidya S.J.	AEMNE 1	9969252777	--	Permanent Repairs, Testing, Scheme Preparation, Scheme Execution (Maheshwari Chowky & Monorail Chowkey), Pillar Maintenance & outstanding recovery in respect of damaged cables
Purandare S.G.	AEMNE 2	9819148149	8097585084	LV Supply Restoration Load sheet, DG Set & Dadar Fault Control, Temp. Supply & Asset Management and MV, EV, Driver allocation including Hiring of vehicles from outside parties.



**ANNEXURE- IV**

**List of “A Grade” Officers (‘ A-4’ ) & ( ‘A – 5’ ) residing in our area of Electric Supply**

Sr. No.	Name	Grade	Department	Mobile No.	Resi. Location
1.	M. M. Salve	Supdt.	O&M(NE)	9820591251	Sitladevi Qtrs.
2.	M. M. Daware	Supdt.	Power Purchase	9869564612	Sitladevi Qtrs.
3.	A.B. Shinde	SUPDT.ES	Workshop - Kussara	9869454302	Matunga Qtrs.
4.	D. R. Chormale	A.E.	Construction	9867998639	Sion Qtrs.
5.	B. S. Kamble	A.E.	CC(B) ward	9869034874	Cumballa Hill Qtrs.
6.	S. S. Patil	A.E.	AGM’s Office	9869100531	Worli
7.	D. J. Bansode	A.E.	CC (E) ward	9967913869	Cumballa Hill Qtrs.
8.	S. K. Jambhale	A.E.	Vigilance (S)	9869011003	Sion Qtrs.
9.	A. T. Kambli	A.E.	System Protection	8104471305	Parel qtrs.
10.	P. C. Rane	A.E.	CC (E) ward	8356855849	Sitladevi Qtrs.
11.	S. R. Deshmukh	A.E.	O&M(NW) (on loan to CC(D)ward)	9987096135	Cumballa Hill Qtrs.
12.	S. M. Choudhari	A.E.	Street Lighting (C)	9869486342	Matunga Qtrs.
13.	T. N. Shekokar	A.E.	Erection (S)	9967538721	Cumballa Hill Qtrs.
14.	I. A. K. Malada	A.E.	CEM’s Office	9969006211	Morland Road
15.	V. R. Mali	A.E.	O&M(CN)	9757110334	Sitladevi R/S
16.	N. B. Nikam	A.E.	Project	9029996162	Sitladevi R/S

**LIST OF ESSENTIAL FEEDERS IN SOUTH ZONE****APPOLLO RSS**

Sr. No.	Essential Consumers	Name of DSS	11KV Feeder	Tr. No.
1.	Electric House	Electric House, Colaba Air Compressor	A-1.4	1
2.	Police Head Quarters	Chhatrapati Shivaji Marg	A-2.4	2
3.	Indian Navy	INS Angre	A-2.5	2
4.	Apollo RSS	Apollo Static	A-4.3	4
5.	Janmabhoomi Press	Janmabhoomi	A-2.7	2
6.	Mumbai Stock Exchange	New Stock Exchange	A-1.5,2.1.3.1	1,2,3
7.	Colaba Tel.Exchange	Strand Cinema	A3.2	3

**G.T.HOSPITAL RSS**

Sr. No.	Essential Consumers	Name of DSS	11KV Feeder	Tr. No.
1.	Times of India	Times/Times of India	GT-1.2	1
2.	Police Commissioner's Office	Commissioner Office	GT-2.4,1.7	1&2
3.	Bombay Hospital	B'bay Hospital Annex.	GT-2.3	2
4.	G.T.Hospital/Cama Hospital	G.T.Hospital	GT-2.1	2
5.	Bombay Hospital Medical Research Center	Medical Research Centre	GT-2.5GT1.6	1,2

**NARIMAN POINT RSS**

Sr. No.	Essential Consumers	Name of DSS	11KV Feeder	Tr. No.
1.	Free Press	Free Press	NP-2.1	2
2.	Sachivalaya	Sachivalaya Annex.	NP-2.2	2
3.	Indian Express	Indian Express	NP2.3/3.3	2, 1
4.	Vidhan Bhavan	New Council Hall	NP-2.7	2
5.	Vidhan Bhavan StandBy Supply	Union Bank	NP-4.1	2
6.	Mantralaya	Mantralaya New	NP-3.6/NP-2.2	2
7.	Aakashwani	A.I.R. Studio	NP-3.3	1
8.	Oberoi Hotel	Oberoi Sheraton / Oberoi Ann.	NP-4.7,NP-1.8,NP-3.5	1, 2, 1

**COLABA RSS**

Sr. No.	Essential Consumers	Name of DSS	11KV Feeder	Tr. No.
1.	Indian Navy	INS Kunjali	C-1.6	1
2.	BEST Computer Centre/Geeta Nagar Pumping	Backbay Depot/Geeta Nagar Pumping	C-3.4	1
3.	Colaba sewage	Colaba sewage	C3.2	3

**HUTATMA CHOWK RSS**

Sr. No.	Essential Consumers	Name of DSS	11KV Feeder	Tr. No.
1.	Telegraphic Office	C.T.O.	HC-1.2,3.3	1&3
2.	ENT Hospital	ENT Hospital	HC1.4	1
3.	City Tel.Exch.	Telephone	HC-2.3	2
4.	VSNL	OCS	HC3.2	3
5.	High Court	High Court	HC-1.3,3.3	1&3

**BALLARD RSS**

Sr. No.	Essential Consumers	Name of DSS	11KV Feeder	Tr. No.
1.	IndianNavy	Ballard Docks	BE-1.4,2.2,3.2	1,2,3
2.	Mint	Mint	BE-2.1/1.2	1, 2
3.	St.George Hosp.+G.P.O	St.George	BE-3.4	3
4.	New Reserve Bank	New RBI, NewMint	BE3.6,1.1	3, 1
5.	BEST VHF Supply/RBI	New Mint	BE-1.1	1

**MARINEDRIVE RSS**

Sr. No.	Essential Consumers	Name of DSS	11KV Feeder	Tr. No.
1.	BMC Churchgate Pumping	Churchgate Sew-Ppg.	MD-1.7	1
2.	Telecom	Telecom	MD-2.4	2
3.	Air-India	Air-India	MD-3.1	3
4.	M.D.RSS	CCI	MD-3.2	3
5.	Vidhan Bhavan	New Council Hall	MD-1.1	1/2

**NAVAL DOCK YARD RSS**

Sr. No.	Essential Consumers	Name of DSS	11KV Feeder	Tr. No.
1.	Naval Dock Yard RSS	All Feeders to Naval Dock	AllFdr.	All

**NAVY NAGAR RSS**

Sr. No.	Essential Consumers	Name of DSS	11KV Feeder	Tr. No.
1.	Colaba sewage	Colaba sewage	NN1.1	1
2.	Army & Navy	MES No.1	NN1.2	1
3.	TIFR	TIFR & TIFR Old	NN1.4,2.5	1, 2
4.	Colaba Observatory Robert Road Pumping	Colaba Observatory, Robert Road Pumping	NN 2.4	2
5.	Ashwini Hospital, Colaba Purification	Ashwini Hospital, Colaba Purification	NN 1.7	1
6.	BEST Computer Centre/Geeta Nagar Pumping	Backbay Depot/Geeta Nagar Pumping.	NN-1.5	1

**BACKBAY RSS**

Sr. No.	Essential Consumers	Name of DSS	11KV Feeder	Tr. No.
1.	Cooperage Exchange	Cooperage Exchange	BB4.7	2
2.	BMC Pumping	Cooperage Pumping	BB2.3	1
3.	Cuffe Parade Tel. Exchange	Somani School East	BB2.5	1
4.	State Control	Cooperage Rd.	BB2.6	1
5.	MERC	Commerce Centre	BB2.5,3.6	1, 2
6.	Sachivalaya Annexe	Sachivalaya Annexe	BB1.5	1
7.	Mantralaya	Mantralaya New	BB1.5	1

**ESPLANADE RSS**

Sr. No.	Essential Consumers	Name of DSS	11KV Feeder	Tr. No.
1.	BMC Pumping & Disaster Management MCGM	Corporation	E4.3	2

**LIST OF ESSENTIAL FEEDERS IN CENTRAL SOUTH ZONE**

**MALBAR HILLRSS**

Sr. No.	Essential Consumers	Name of DSS	11KV Feeder	Tr. No.
1.	Varsha Bungalow (CM Resident)	Mount Pleasant (E)	MH1.1	1
2.	Sahyadri Guest House	Sahyadri Guest House	MH1.1	1
3.	Malbar Hill R.S.S.	New Siri Road	MH2.7	2

**NEPEANSEA RSS**

Sr. No.	Essential Consumers	Name of DSS	11KV Feeder	Tr. No.
1.	Governor of Maharashtra	Raj Bhavan	NS2.1	2
2.	Raj Bhavan Premises	Walkeshwar (S)	NS1.1	1
3.	MalbarHill Reservoir	Malbar Hill Reservoir	NS2.4	2
4.	Malbar Hill Pumping	Malbar Hill Pumping	NS2.4	2
5.	Nepeansea Road RSS	Godrej Baug	NS4.5	1
6.	Varsha Bungalow (CM Resident)	Mount Pleasant & Everest Apartment	NS3.2	2

**GRANT ROAD RSS**

Sr. No.	Essential Consumers	Name of DSS	11KV Feeder	Tr. No.
1.	Grant Road R.S.S.	Grant Road Static	GR3.1	3
2.	Khetwadi R.S.S.	Grant Road Static	GR3.1	3
3.	Harkisandas Hospital	Harkisandas Hospital	GR1.6	1
4.	Saifee Hospital	Saifee Hospital	GR1.1	1
5.	J.J. Hospital	Baboola	GR4.6	4
6.	Durgadevi Reservoir	Durgadevi Reservoir	GR2.4	2

**CUMBALA HILLS RSS**

Sr. No.	Essential Consumers	Name of DSS	11KV Feeder	Tr. No.
1.	Breach Candy	New Breach Candy	CH1.5	1
2.	Breach Candy	New Breach Candy	CH3.6	3
3.	Jaslok	Jaslok	CH3.3	3
4.	Cumbala Hill R.S.S.	Olympus	CH1.3	1
5.	Antilia	Antilia	CH3.2	3
6.	Antilia	Antilia	CH2.5	2
7.	Residence Municipal Commissioner / RBI Governor Bungalow / General Manager Railway	Pedder Road (E)	CH2.3	2

**ESPLANADE RSS**

Sr. No.	Essential Consumers	Name of DSS	11KV Feeder	Tr. No.
1.	System Control	Vidyut	E2.1	2
2.	Esplanade R.S.S.	Vidyut	E2.1	2
3.	Kalbadevi Telephone Exchange	Kalbadevi Telephone Exchange	MU3.3	3

**GIRGAUM RSS**

Sr. No.	Essential Consumers	Name of DSS	11KV Feeder	Tr. No.
1.	Girgaum R.S.S.	Girgaum (W)	GM 2.7	2

**MUMBADEVI RSS**

1.	Mumbadevi R.S.S.	Mumbadevi Tank	MU3.3	3
----	------------------	----------------	-------	---

**MASJID RSS**

Sr. No.	Essential Consumers	Name of DSS	11KV Feeder	Tr. No.
1.	Masjid R.S.S.	Khadak Street	MS 1.2	1
2.	Shayda Marg MCGM Pumping	Shayda Marg	MS 2.6	2

**J.J.HOSPITAL RSS**

Sr. No.	Essential Consumers	Name of DSS	11KV Feeder	Tr. No.
1.	J.J. Hospital	J.J. Hospital North	JJ1.4	1
2.	J.J. Hospital	J.J. Hospital	JJ2.4	2

**NIMKAR MARG RSS**

Sr. No.	Essential Consumers	Name of DSS	11KV Feeder	Tr. No.
1.	Harkisandas Hospital	Harkisandas Hospital	NM1.5	1
2.	Harkisandas Hospital	Harkisandas Hospital	NM2.5	2
3.	Nimkar Marg RSS	Tardeo Depot	NM1.1	1

**MAZGAON SHIPYARD RSS**

Sr. No.	Essential Consumers	Name of DSS	11KV Feeder	Tr. No.
1.	Mazgaon Shipyard RSS	BSN	MSY1.5	1

**LIST OF ESSENTIAL FEEDERS IN CENTRAL NORTH ZONE**

**KUSSARA RSS**

Sr. No.	Essential Consumers	Name of DSS	11KV Feeder	Tr. No.
1.	Kussara RSS	Kussara STATIC	K2.3.	2
2.	P & O Dock	P & O Dock	K2.3.	2
3.	Ahilyabai Head and Neck Cancer Hosp	Cancare	K1.2	1

**KEM HOSPITAL RSS**

Sr. No.	Essential Consumers	Name of DSS	11KV Feeder	Tr. No.
1.	Wadia Hospital	Wadia Hospital	KEM1.1/2.2	1
2.	Tata Hospital,	New Tata Memorial	KEM1.1	1
3.	Haffkin Institute	New Haffkin	KEM1.4	1
4.	Tata Hospital	Jubli Block	KEM2.1	2
5.	KEM Hospital & KEM RSS	KEMNo.2	KEM2.5	2

**SEWREE RSS**

Sr. No.	Essential Consumers	Name of DSS	11KV Feeder	Tr. No.
1.	Sewree RSS	King Edward	SW1.4	1
2.	KEM Hospital	KEM XRay Cardiac	SW1.6	1
3.	T.B.Hospital	Hospital	SW2.3	2
4.	Tata Cancer Hospital	Tata Memorial Annex.	SW3.3	3

**SWAN MILL RSS**

Sr. No.	Essential Consumers	Name of DSS	11KV Feeder	Tr. No.
1.	Omnitalk Wireless Repeater Tower	TATA Housing	SN1.1	1
2.	Swan Mill RSS	Swan Mill Static	SN1.6	1

**MORARJI MILL RSS**

Sr. No.	Essential Consumers	Name of DSS	11KV Feeder	Tr. No.
1.	Morarji RSS	Morarji Mills RSS Supply	Morarji Mill RSSLVB	1

**MAZGAON DOCK RSS**

Sr. No.	Essential Consumers	Name of DSS	11KV Feeder	Tr. No.
1.	Prince Ali Khan Hosp.	Ismalia Hosp.	MZ1.3	1
2.	Mazgaon Tel. Exchange	Mazgaon Tel. Exchange	MZ1.4.	1
3.	Mazgaon Dock	South Yard	MZ1.5.	1
4.	Bhandarwada Pumping	Bhandarwada Pumping	MZ2.1.	2
5.	Mazgaon Dock RSS	Mazgaon Dock Qtrs.	MZ2.2	2
6.	Naval store depot	Ordinance depot	MZ2.6	2
7.	P & O Dock	P & O Dock	MZ 2.2	2

**BOMBAY CENTRAL RSS**

Sr. No.	Essential Consumers	Name of DSS	11KV Feeder	Tr. No.
1.	Bombay Central RSS	Potia Estate	BCT2.2	2
2.	S.T.Depot	State Transport	BCT3.6	3
3.	Jagjivanram Hospital	Jagjivanram	BCT 1.4	1
4.	Byculla Fire Brigade	Souter Street	BCT1.5	1

**BYCULLA RSS**

Sr. No.	Essential Consumers	Name of DSS	11KV Feeder	Tr. No.
1.	Byculla RSS	Connaught West	BY2.2	2
2.	Boundary Rd.Pumping Stn.	Boundary Rd.	BY2.3	2
3.	Masina Hospital	Masina Hospital	BY3.6	3

**PAREL RSS**

Sr. No.	Essential Consumers	Name of DSS	11KV Feeder	Tr. No.
1.	MTNL Curry Rd.	MTNL Curry Rd.	P1.4	1
2.	Chinchpokli Pumping Stn.	Chinchpokli Pumping	P1.5	1
3.	M.G.Hospital & Parel Tank Pumping Stn.	M.G.Hospital	P2.1	2
4.	Parel RSS	Wadia Co-Op.	P3.3	3
5.	KEM Hospital & KEM RSS	KEM No.2	P3.5	3
6.	Global Hosp	Global Hosp	P 3.4	3



**NAIR HOSPITAL RSS**

Sr. No.	Essential Consumers	Name of DSS	11KV Feeder	Tr. No.
1.	Nair OPD	Nair OPD	NH1.1	1
2.	Nair Hospital RSS	Nair Hospital Static	NH1.2	1
3.	Nair Hospital	Nair Hospital	NH1.4	1
4.	Byculla Tel. Exchange	Byculla Tel. Exchange	NH2.1	2

**MAHALAXMI RSS**

Sr. No.	Essential Consumers	Name of DSS	11KV Feeder	Tr. No.
1.	Kasturba Hospital	Sane Guruji Marg	ML1.5.	1
2.	Dr.B.A.110KVRSS	SBM Static	ML1.1	1
3.	MCGM'S Wyle Rd.Ppg Stn.& Civil Defence	Jacob Circle	ML 2.3	1

**LALBAUG RSS**

Sr. No.	Essential Consumers	Name of DSS	11KV Feeder	Tr. No.
1.	Lalbaug RSS	Lalbaug Static	LB 1.3	1

**APOLLO MILL RSS**

Sr. No.	Essential Consumers	Name of DSS	11KV Feeder	Tr. No.
1.	Apollo Mill RSS	Lodha Premerio Annx	AM1.2	1

**SIMPLEX MILL RSS**

Sr. No.	Essential Consumers	Name of DSS	11KV Feeder	Tr. No.
1.	Simplex Mill RSS	Planet Godrej	SX2.2	2
2.	Jacob Circle Pumping Stn, Mahalaxmi RSS	New Circle	SX1.4	2

**LIST OF ESSENTIAL FEEDERS IN NORTH EAST ZONE**

<b><u>KINGSWAY RSS</u></b>				
Sr. No.	Essential Consumers	Name of DSS	11KV Feeder	Tr. No.
1.	Matunga MCGM Pumping	Matunga Air Compressor	KG 1.6	1
2.	Wadala Pumping (HV) MCGM	Wadala Pumping	KG 1.3	1
3.	Sigma Laboratory	Vishnu Chandra Sky	KG 1.5	1
4.	Supervisory Control/Kingsway RSS	Kingsway Static	KG 2.7	2
5.	Wadala Tel. Exchange (HV)	Wadala Tel. Exchange (HV)	KG 2.5	2
6.	Naigoan MCGM Maternity Home	Naigaon Hostel	KG 2.3	2
7.	Supervisory Control	Bus Garage	KG 4.6	4
8.	Traffic Control	Wadala Depot	KG 4.3	4
9.	CNG Wadala BEST Depot	Wadala CNG (HV)	KG 4.3	4
<b><u>SION FORT RSS</u></b>				
Sr. No.	Essential Consumers	Name of DSS	11KV Feeder	Tr. No.
1.	Sion Tel. Exch. (HV)	Sion Tel. Exch. (HV)	SF 1.2	1
2.	Lion Centre	Lion Centre	SF 1.5	1
3.	Sion Fort RSS	Sion Fort	SF 1.6	1
4.	Sion Hospital	Sion Hospital	SF 1.5	1
5.	Duncan Sewage Pumping (MCGM)	Duncan Sewage Pumping	SF 2.5	1
6.	Air Force Qtrs.	Air Force Qtrs. (HV)	SF 1.7	1
7.	Sion Pumping MCGM	Sion Pumping	SF 2.1	2
<b><u>WADALA RSS</u></b>				
Sr. No.	Essential Consumers	Name of DSS	11KV Feeder	Tr. No.
1.	Salt Pan Pumping/Wadala RSS	Salt Pan Pumping	WD 1.1	1
2.	Kikabai Hospital	Kikabai Hospital (HV)	WD 1.3	1
3.	Antop Terminus RSS	New Cementation (RHS)	WD 1.1	1
4.	Wadala Fire Station	Wadala Fire Station	WD 1.7	1
5.	IPR Office	IPR Office	WD 2.3	2
<b><u>RAOLI HILL RSS</u></b>				
Sr. No.	Essential Consumers	Name of DSS	11KV Feeder	Tr. No.
1.	Raoli Hill RSS	Raoli Hill Static	RH 1.7	1
2.	Anik CNG Station	Anik No. 1 LHS	RH 1.4	1
3.	Mahanagar gas	Mahanagar gas	RH 1.4	1
4.	Anik Depot EV Bus Charging Station	EV Bus Charging No. 1	RH 1.4	1

5.	Pratiksha Nagar Pumping (Water Supply Project MCGM)	Pratiksha Nagar Pumping (HV)	RH 1.4	1
6.	LC RSS	Elisium	RH 1.6	1
7.	Raoli Camp MCGM Maternity Home	Raoli Camp	RH 1.1	1
8.	Raoli Hill Pumping	Raoli Hill Pumping	RH 2.3	2

**LODHA CROWN RSS**

Sr. No.	Essential Consumers	Name of DSS	11KV Feeder	Tr. No.
1.	Anik Depot EV Bus Charging Station	EV Bus Charging No. 1	LC 1.6	1
2.	Anik CNG Station	Anik No. 1 RHS	LC 1.6	1

**PRATIKSHA NAGAR RSS**

1.	Pratiksha Nagar RSS	Pratiksha Nagar Static	PN 1.1	1
2.	Somaiya Ayurvihar Hospital	Somaiya Trust	PN 1.1	1

**ANTOP TERMINUS RSS**

Sr. No.	Essential Consumers	Name of DSS	11KV Feeder	Tr. No.
1.	Shanghavi Hospital (Eye)	Shanghavi Hospital HV	AT 1.1	1

**DHARAVI RSS**

Sr. No.	Essential Consumers	Name of DSS	11KV Feeder	Tr. No.
1.	Sion Hospital	Sion Medical/Tilak Hospital Auditorium/Sion Hospital	DH 2.3	2
2.	Sion Hospital	Tilak Hospital Quarters	DH 2.4	2
3.	Dharavi R.S.S.	Shalimar Ind. Est.	DH 3.4	3

**MAHIM C'WAY RSS**

Sr. No.	Essential Consumers	Name of DSS	11KV Feeder	Tr. No.
1.	Mahim C'Way R.S.S. & New Diabetic Association.	Mahim C'Way Static	MC 4.4	4

**SITALADEVI RSS**

Sr. No.	Essential Consumers	Name of DSS	11KV Feeder	Tr. No.
1.	Sena Bhavan & Shushrusha Hosp.	Anand Van	ST 2.3	2

2.	Mahim Village Hospital	Mahim Village Hospital	ST 3.2	3
3.	Hinduja Hospital	National Hospital Annex. (HV)	ST 3.3	3
4.	New Tulasi & BPL Centre (HV)	Mahim PPG /HV	ST 4.2	4
5.	Mayors Bungalow & Sitaladevi RSS	Cadell Rd.	ST 4.4	4
6.	Hinduja Hospital	National Hospital	ST 4.7	4
7.	New Dadar Purification (HV)	New Dadar Purification. (HV)	ST 2.5	2
8.	Shivaji Park Tel. Exch.	Shivaji park Tel. Exch.	ST 2.7	2

**LIST OF ESSENTIAL FEEDERS IN NORTH WEST ZONE**

<b><u>MAHIM RSS</u></b>				
Sr. No.	Essential Consumers	Name of DSS	11KV Feeder	Tr. No.
1.	Prabhadevi Tel. Exch. (HV) & GMT Block (HV)	Prabhadevi Tel. Exch. (HV) & GMT Block	MM2.1	2
2.	VSNL(HV)	VSNL Static	MM1.1	1
3.	Mahim RSS	Mahim Static	MM2.6	2
4.	Diagnostic Centre	Diagnostic Centre	MM2.7	2
<b><u>WORLI RSS</u></b>				
Sr. No.	Essential Consumers	Name of DSS	11KV Feeder	Tr. No.
1.	Worli RSS	Raheja Atlantis	W1.4	1
2.	MCGM Control	MCGM Data Centre	W2.4	2
3.	MCGM's TP Rd PPG Stn.	New Fergusson Air Compressor	W3.3	3
<b><u>PRABHADEVI RSS</u></b>				
Sr. No.	Essential Consumers	Name of DSS	11KV Feeder	Tr. No.
1.	Prabhadevi Tel. Exchange	Prabhadevi Tel. Exchange	PR1.1	1
2.	Prabhadevi RSS	A. B. Road(N)	PR3.3	3
3.	Doordarshan	Doordarshan	PR3.5	3

**NESTLE RSS**

Sr. No.	Essential Consumers	Name of DSS	11KV Feeder	Tr. No.
1.	Nestle RSS	Nestle	NST 1.1,2.7	1,2
2.	Peninsula Park	Peninsula Park	NST2.2	2

**STANDARD MILL RSS**

Sr. No.	Essential Consumers	Name of DSS	11KV Feeder	Tr. No.
1.	Cynergy IT Park	Cynergy IT Park	SM1.1,1.2	1
2.	Standard Mill RSS	Standard Mill Static	SM1.6	1

**POCHKHANWALA RSS**

Sr. No.	Essential Consumers	Name of DSS	11KV Feeder	Tr. No.
1	Traffic Police Qtr.	Traffic Police Qtr.	PK1.5	1
2	Naval Coast Guard	Coast Guard Creek	PK1.6	1

**V.S.N.L. RSS**

Sr. No.	Essential Consumers	Name of DSS	11KV Feeder	Tr. No.
1	VSNL	VSNL Static	V1.2	1

**ELPHINSTON MILL RSS**

1	Jupiter Mill	Jupiter Mill	EL1.6	1
2	India Bulls	Elphinston Mill RSS	EL1.3&1.7	1
3	ESIC Hospital	ESIC Hospital	EL1.5	1

**P.M.G.P. RSS**

Sr. No.	Essential Consumers	Name of DSS	11KV Feeder	Tr. No.
1.	Dharavi Depot	Dharavi Depot	PM3.1	3
2.	ONGC Complex (HV)	ONGC	PM1.2	1
3.	Dharavi Purif. (HV)	Dharavi Purif. (HV)	PM2.1	2

**WORLI DAIRY RSS**

Sr. No.	Essential Consumers	Name of DSS	11KV Feeder	Tr. No.
1.	Doordarshan Kendra	Doordarshan	WRD1.1	1
2.	Worli Tel. Exchange	Worli Tel. Exchange	WRD1.2	1
3.	Worli Dairy RSS	Rishikesh	WRD2.2	2
4.	Naval Coast Guard	Coast Guard Creek	WRD2.1	2
5.	MCGM	Engineering Hub	WRD2.4	2
6.	Worli pumping (HV)	Worli pumping	WRD 1.2	1

**LOVEGROVE RSS**

Sr. No.	Essential Consumers	Name of DSS	11KV Feeder	Tr. No.
1.	MCGM's L.G. PPG Stn.	Love Grove RSS	LG 1.8/2.7/4.2	1,2,4
2.	Love Grove RSS	Discovery Of India	LG3.5	3
3.	Atria Mall	Sainath co-op	LG3.6	3
4.	Nehru Science Centre	Science Centre	LG3.3	3

**ANNEXURE - VI**

**BOOKING OF 'A' GRADE OFFICERS AT VARIOUS RECEIVING STATIONS  
DURING EMERGENCY / DISASTER OF LARGE MAGNITUDE**

<b><u>ZONE</u></b>	<b>Sr. No.</b>	<b>NAME OF RSS</b>	<b>PROPOSED BOOKING</b>	
			<b><u>20.00 HRS TO 08.00 HRS</u></b>	<b><u>08.00 HRS TO 20.00 HRS</u></b>
<b>SOUTH</b>	1.	Apollo	S.S.Patil	J.P. Dhodi
	2.	Backbay 110 KV	S. M .Qadri	S.R. Deskhmukh
	3.	Ballard Estate	P.N. Chaudhary	A.A.M.S. Khan
	4.	Colaba	S. D. Suryawanshi	P.R. Sonawane
	5.	G.T. Hospital	P.A. Prabhu	P. R. Patil
	6.	Hutatma Chowk	N.N. Thale	S.A. Kulkarni
	7.	Marine Drive	A.V.Sawant	U.H. Gosavi
	8.	Nariman Point	D.R. Ingle	V. S. Chavan
	9.	Naval Dock	---	---
	10.	Navy Nagar	M.H. Kamble	S. D. Kulkarni
<b>CENTRAL SOUTH</b>	11.	Cumballa Hill	S. M. Virkar	T.M.More
	12.	Esplanade	S.M. Sonawane	P. P .Kulkarni
	13.	Girgaum	S.D. Lokhande	S.P. Kumbhar
	14.	Grant Rd	K.A. Dadmal	S. R. Shinde
	15.	J.J. Hospital	S. J. Vaidya	J.L. Pawar
	16.	Khetwadi	N.A. Bhosale	D. R. Jamghare
	17.	Malbar Hill	S.N. Jagtap	R.S. Kadam
	18.	Masjid	S. D. Bele	A.R.Taware
	19.	Mumbadevi	J. A. Mulla	N.N. Sonawane
	20.	Nimkar Marg	V. R. Mali	R.G. Kalvikatte
	21.	Mazgaon Ship Yard	----	----
<b>CENTRAL NORTH</b>	22.	B. Ambedkar 110 KV	G. U. Phene	V.S. Gujar
	23.	Byculla	L.S. Patil	S.G. Surti
	24.	Kussara	G.N. Jadhav	S.D.Patil
	25.	Lalbaug	M.H. Waghmare	S. M. Virkar
	26.	Love Grove	S.S. Kulkarni	V.K.Ade
	27.	Mahalaxmi	Y.S. Giri	A.R. Koyande
	28.	Mazgaon Dock	----	----
	29.	Mumbai Central	S.G. Kamdar	Y. N .Mayekar
	30.	Nair Hospital	N. S. Kunde	B.S.Gosavi
	31.	Parel	S.V. Shaha	B.B. Raikar
	32.	Tardeo	V.G. Nagvekar	L. B. Nagavekar
	33.	Worli Dairy	S.S.Kamble	Y. V .Kapadia
	34.	Futurex	-----	----
	35.	Jalan Mill	----	-----
	36.	Apollo Mill	S.D. Kamble	J.M. Lande
	37.	Simplex Mill	P. B .Gadankush	V.S.Gujar
	38.	Avighana	---	-----

**BOOKING OF 'A' GRADE OFFICERS AT VARIOUS RECEIVING STATIONS  
DURING EMERGENCIES / DISASTER OF LARGE MAGNITUDE**

<b><u>ZONE</u></b>	<b>Sr. No.</b>	<b>NAME OF RSS</b>	<b>PROPOSED BOOKING</b>	
			<b><u>20.00 HRS TO 08.00 HRS</u></b>	<b><u>08.00 HRS TO 20.00 HRS</u></b>
<b>NORTH EAST &amp; NORTH WEST</b>	39.	Dharavi	N. B. Nikam	Y. R. Agnihotri
	40.	Mahim	M.M. Davre	N.M. Wayal
	41.	Mahim Causeway	S.Y. Jagtap	B.S. Wahut
	42.	Nestle	J. T. Patil	K. A. Loke
	43.	PMGP	V.S. Gugnani	D.A. Mehta
	44.	Prabhadevi	D.S. Kadam	S. S. Kuril
	45.	Elphinston Mill	P.A. Puranik	P.C.Rane
	46.	Sitaladevi	M. M. Salve	V.R. Bhise
	47.	Standard Mill	S.P. Dhake	R.M. Prabhu
	48.	Worli	M.A.S.A. Shaikh	R.R. Bandal
	49.	VSNL	-----	----
	50.	Peninsula Land	-----	----
	51.	Pochkanwala Road	P. N. Harne	S.V. Shelke
	52.	K'way	D.N. Desai	K.R. Daberao
	53.	KEM Hospital	M.R. Masurkar	G. P. Choudhary
	54.	Raoli Hill	K.A. Dadmal	V. N .Kulkarni
	55.	Sewree	S. R .Sonde	A.S. Adangale
	56.	Sion Fort	S.G. Purandare	V.K.Sontakke
	57.	Swan Mill	R.K. Kamble	M. N. Rathod
	58.	Wadala	B.R. Bhole	C.S. Bramhane
59.	Lodha Crown	A. S. Samant	I.A.K.Malada	
60.	Pratiksha Nagar	M.N.Rathod	A. G. Khandare	



**ANNEXURE-VII**

**Electric Supply – Names, Address & Telephone Nos. of Senior Officers**

Sr. No	Name	Design.	Office		Residence		Functional Responsibilities
			Location	Telephone Nos.	Location	Telephone Nos.	
1.	Anil Diggikar	GM	Colaba	22799313 22856262 22873961			Entire over all in-charge of Electric Supply & Transport
				Email ID : <a href="mailto:gm@bestundertaking.com">gm@bestundertaking.com</a>			
2.	Vacant	DGM(ES)	Colaba	22830284 22831950 22856262 Extn.510			Entire over all in-charge of Electric Supply
				Email ID : <a href="mailto:dgm@bestundertaking.com">dgm@bestundertaking.com</a>			
3.	Shaikh B.A.W.	AGM(ES)	Colaba	22831950 22799510 22830284 Extn. 501/510	B/4, Morland Rd. Officers Qtrs. Near Mumbai Central Bus depot Mumbai 400008	9967915094	Over all In-charge of Electric Supply
				Email ID : <a href="mailto:agmes@bestundertaking.com">agmes@bestundertaking.com</a>			
4.	Dr. Patsute R.D.	CER	Colaba	22040081 22856262 22799565 Extn. 565	Flat No.112 BEST Multistory Building 11th Floor , 142 Colaba M-01	9869405910	Overall In-charge of Regulatory Cell
				Email ID : <a href="mailto:cer@bestundertaking.com">cer@bestundertaking.com</a>			
5.	Chougule N.N.	CEM	Colaba	22840942 22856262 Extn. 502	Bldg.E2, FlatNo.11, Gitanjali CHS, Sector 46,Nerul(W), Navi Mumbai 400706	27718375 996932448 5	Overall In-charge of O & M Dept., all executing dept. i.e. Erection North, South & Construction
				Email ID : <a href="mailto:cem@bestundertaking.com">cem@bestundertaking.com</a>			

6.	Makwana S.P.	CEPL	Colaba	22799581 22799583 Extn.581 22799732 Extn. 732	906, Neelkant Enclav. LBS Marg, Opp. Shreyas Cinema, Ghatkopar (W) Mum-86	25001157 9869205357	Overall In-charge of Project, Planning, Network, Planning Material, procurement of Street Lighting SCADA System & RDSS Project
				Email ID: cepl@bestundertaking.com			
7.	Chandankar G.G.	CECC	Colaba	22799563 Extn.566	B/15, BEST Off. Qtrs. Altamount Rd.,Cumbala Hill, Mum-26	9757435560	<u>Overall In-charge of Customer Care Dept., Meters, IT &amp; CGRF Dept.</u>
				Email ID: cecc@bestundertaking.com			
8.	Bhinge S.N.	DCEP /DCER	Colaba	22811257 22853483	B-3/302/ Shree Raj Laxmi Park, Kharegaon, Kalwa, Thane 400605	25397140 9869475911	Overall In- charge of Power Management & Procurement of Renewable Energy and Regulatory Cell
				Email ID :dcemerc@bestundertaking.com			
9.	Fulpagare S.V.	DCE(DS)	Phatak adi	22013635	BEST off. Qtrs. Potia Land Mumbai Central Mumbai 400008	9869870154	Overall In--charge of Operation and Maint. (South / Central South) Departments
				Email ID : dceds@bestundertaking.com			
10	Pawar D.N.	DCE (W)	Kussara	8097584818 8097584820	C/703,M-2, CHS Pratiksha Nagar, Sion, Mumbai 400022	9870383684	Overall In- charge of works dept. i.e. executing departments Erections & Construction
				Email ID : dcew@bestundertaking.com			
11	Samuel N.N.	DCE (Review)	Colaba	22828891 22799732	Shivlal Motilal Bldg. 2 <sup>nd</sup> flr. Jehangir Boman Behram Marg, Mumbai Central 400 008	9833088957	In- charge of Review Committee
				Email ID: dcerc1@bestundertaking.com			

12	Talegaonkar A.R.	DCECC (N)	Wadala	24101532	3/14,BES Officer Qtrs.Plot:56, Gorai- 2, Borivali (W),Mumbai 400091.	9819065801	Overall in- charge of Customer Care E,FS,FN,GN,GS SIMHA
13	Bansode S.S.	DCECC (S)	Colaba	22841675	25/C/702, New Dindoshi Greenfield CHS, Mhada, Goregaon (E),Mumbai 400065	9869407196	Overall In-charge of Customer Care A,B,C,D, Meters & HVC Dept.
14	Gunjal P.D.	DCE (DN)	Wadala	24102929	3rd flr , BEST Off.Qtrs,125,M .B.Raut Rd, Shivaji Park, Dadar Mumbai-28	7710008156	Overall In- charge of all Operation and Maintenance of North Dept.
15	Deshmukh D.S.	DCE (SL)	Sewree	24116023	A-1, Flat no.15, BEST Off. Qtrs. A.D. Ubhare Marg, Ghatkopar (W), Mumbai 75	9969007861	Overall In- charge of Street Lighting, Maintenance, Construction &Tele communication & Electronics Department
16	Mukane S.B.	DECO	Sewree	24165188 24162879 720894082 5	BEST off. Qtrs.12/B, FlatNo.8, Mhada Colony Andheri (E), Mumbai 400093	982148918 3	In-charge of Construction Dept.

17	Bamble M.B.	DEEN	Kussara	23719755 7208973138	B-15, Happy Home Society ,Jaideep Nagar, Nahur (E),Mumbai 400042	9769984929	In-Charge of Erection North Dept.
18	Gholap P.V.	DEES	Kussara	23719763 7208972472	E-2/2:2, Shri Gajanan Darshan CHS, Sector- 7, Sanpada)( E),Navi Mumbai- 400705	887985351 5	In-Charge of Erection South Dept.
19	Jogalekar S.D.	DEMNE	Anik	24012951 8097585083	A-4, BEST Officers Qtrs Altamount Road, Mumbai 400 026	9869035537	In-Charge of Operation & Maintenances North East Dept.
20	Patil S.V.	DEMNW	Prabha devi	7208940968	B-1, 16, BEST officers Quarters, Devidayal Road, Mulund (W), Mumbai- 400 080.	7710926167	In-Charge of Operation & Maintenances North West Dept.
21	Kamble M.S.	DEMCN	Wadala	24120301	Q1306 Shrusti Heights Opp. Asian Paints L B S Marg Kurla Mum 78	9757092063	In-Charge of Operation & Maintenances Central North Dept
22	Narkhede P.S.	DEMCS	Phatak wadi	22073875 2080524 Ext.741	BEST Officer Quarters , B2/25, Devi Dayal Road Mulund West, Mum-80	7506000722	In-Charge of Operation & Maintenances Central South Dept.

23	Kurade V.U.	DEMS	Colaba Off Shore Bldg.	22154428	FAM CHS, 12/202, Flat No.19, 19A, Sector 11, Koparkhairane ,Navi Mumbai 400 709.	8355955006 9869065499	In-Charge of Operation & Maintenances South Dept
Email ID: <a href="mailto:dems@bestundertaking.com">dems@bestundertaking.com</a>							
24	Pawar S.N.	DECCA WARD	Colaba	22856262 Extn. 511	A-404, Pratibha Sankalp CHS, Plot no.19, Nagari Niwara Parishad, Goregaon East, Mum- 97	9987014661	In-Charge of CustomerCare AWard
Email ID: <a href="mailto:deccaward@bestundertaking.com">deccaward@bestundertaking.com</a>							
25	Deshmukh R.J.	DECC B WARD	Colaba	22856262 Extn. 541	A/102, RegencyGarden, Murbad Road, Purnima Talkies, Kalyan (W), 421301	998704207 1	In-Charge of CustomerCare BWard
Email ID: <a href="mailto:deccbward@bestundertaking.com">deccbward@bestundertaking.com</a>							
26	Kharote M.A.	DECC C Ward	Phatak wadi	22011814 097584862	1/C,43, KalpataruHills, Chitalsar, Manpada, Thane(W), 400 610	9082080499	In-Charge of CustomerCare CWard
Email ID: <a href="mailto:decccward@bestundertaking.com">decccward@bestundertaking.com</a>							
27	Inchnalkar S.N.	DECC D Ward	Tardeo	7208836092	Best Off. Qtrs FlatNo.8, Vittal ChavanMarg, Parel East, Mum12	986975460 1	In-Charge of CustomerCare DWard
Email ID: <a href="mailto:deccdward@bestundertaking.com">deccdward@bestundertaking.com</a>							
28	Taur S.M.	DECC E Ward	Mumbai Central	7208836177	A-1, Flat no.11, BEST Off. Qtrs. A.D.UbhareMarg, Pantnagar, Ghatkopar (E), Mumbai 75	9969011671	In-Charge of CustomerCare EWard
Email ID: <a href="mailto:decceward@bestundertaking.com">decceward@bestundertaking.com</a>							
29	Tiwari A.R.	DECC F / North Ward	Wadala	24181324 24190680 Extn . 680	505, Radha Krishana Apt, 5 <sup>th</sup> floor, C-block, Ulhasnagar-3,	8668988051	In-Charge of CustomerCare F / North Ward
Email ID: <a href="mailto:deccfnward@bestundertaking.com">deccfnward@bestundertaking.com</a>							

30	Mairh S.S.	DECC F / South Ward	Wadala	24104282 24190747 Extn. 747	1 A, 604, Laxmi CHSL, Devrata nagar, Nr. Chunabhatti Police Stn.Chunabh atti (E) Mum 022	9892687236	In-Charge of CustomerCare F / South Ward
Email ID: <a href="mailto:deccfsward@bestundertaking.com">deccfsward@bestundertaking.com</a>							
31	Gawade S.S.	DECC G / North Ward	Dadar	24141389 24194555 24146262 Extn. 555	A/504, Rajsatyam, Shi vvalab Rd.,Ashok Van Dahirsar E),Mumbai 068	24308661 9769626846	In-Charge of CustomerCare G / North Ward
Email ID: <a href="mailto:deccgnward@bestundertaking.com">deccgnward@bestundertaking.com</a>							
32	Patil D.G.	DECC G / South Ward	Dadar	24120557 24190703 24146262 Extn. 543	9/302,FAM CSH Ltd., Plot no. 19, Sector 11, Kopar Khairane, Navi Mumbai - 400709.	986922603 4	In-Charge of CustomerCare G / South Ward
Email ID: <a href="mailto:deccgsward@bestundertaking.com">deccgsward@bestundertaking.com</a>							
33	Bansode P.K.	DECC (SIMHA)	Wadala	24157813 24190606 24146262 Extn. 606	43/103, Devratna Ngr, Swadeshi MillComp. Chunabhatti, Mumbai 022	24054421, 9004210369	In-Charge of CustomerCare Simha Dept.
Email ID: <a href="mailto:deccsimha@bestundertaking.com">deccsimha@bestundertaking.com</a>							
34	Adlinge S. S.	DEMR	Wadala	24186353 24146262 Extn. 571 24194571 24186353 Extn. 590	12 B / 7, 1 <sup>st</sup> Flr.,Shivner Vasahat Marg,near PMGP Colony, Majaswadi, Mumbai 054	9869289810	In-Charge of CustomerCare Meters Dept.
Email ID: <a href="mailto:demr@bestundertaking.com">demr@bestundertaking.com</a>							
35	Bains G.R.	DEHVC	Tardeo	7304456095	Flat No.3, C- Wing, BEST Officers Quarters, Altamount Road, Cumbala Hill,Mumbai- 400 026	9967440695	In-Charge of High Value Consumers Dept.
Email ID: <a href="mailto:deea@bestundertaking.com">deea@bestundertaking.com</a>							
36	Anwar M.K.	DESL (M)	Kussara	23781839 8097584834	<u>Flat No.3,3<sup>rd</sup></u> <u>Flr, BEST</u> <u>Officers'</u> <u>Qtrs.,Sion</u> <u>Fort, Sion</u> <u>Rd.no.1M-</u> <u>22</u>	9869222159	In-Charge of Street Lighting Maintenance Dept.
Email ID: <a href="mailto:deslm@bestundertaking.com">deslm@bestundertaking.com</a>							

37	Pardeshi S.V.	DET&E	Tardeo	23090036 23026801	Flat No.2,Flr,BEST Officers Qtrs., SionFort, SionRd.no.1, M- 22	9869043987	In-Charge of Telecommunication & Electronics Dept.
Email ID: <a href="mailto:dete@bestundertaking.com">dete@bestundertaking.com</a>							
38	Daware M.K.	DEPRO/DECGRF	Veej Bhavan	22822080 7208975906	R.N. 142, 14 <sup>th</sup> flr Multistory Bldg, Electric House , Colaba, Mumbai 1	9833082803	In-Charge of Project Dept & CGRF
Email ID: <a href="mailto:depro@bestundertaking.com">depro@bestundertaking.com</a>							
39	Kulkarni S.P.	DEMTS	Kussara	23719753 8097584823	F 602, Rail Nagar, CHS Vazira Naka ,Chandavarkar Road, Borivali-west, Mum91	9869246017	In-Charge of Material Testing & Standard Dept.
Email ID: <a href="mailto:demts@bestundertaking.com">demts@bestundertaking.com</a>							
40	Chougule S.D.	DEPL (M)	Veej Bhavan	2281125472 08972462	E/2/15, Geetanjali CHS, Sector-46, Seewood, Nerul-W, Navi Mumbai 706	8291206661	In-Charge of Planning (Materials) Dept.
Email ID: <a href="mailto:deplm@bestundertaking.com">deplm@bestundertaking.com</a>							
41	Khadake Y.N.	DEPL (N)	Veej Bhavan	22880950 7208972451	11/2,BEST Officers Quarters, Plot no.56,Gorai Road, Borivali-W, Mumbai 92	9869401952	In-Charge of Planning Network (South&North) Dept.
Email ID: <a href="mailto:deplns@bestundertaking.com">deplns@bestundertaking.com</a> <a href="mailto:depnet@bestundertaking.com">:depnet@bestundertaking.com</a>							
42	Rane M.M.	DE (PM)	Colaba	22880950 7208972451	1203, Rachana Garden Primrose CHS.Guru GovindSing Marg, Mulund West Mumbai 014	9869396701 8879808046	In-Charge of Power Management Dept.
Email ID: <a href="mailto:depower@bestundertaking.com">depower@bestundertaking.com</a>							
43	Jadhav S.A.	DE (PP)	Colaba	22856262 Extn. 555	OQ-A2/27, 6 <sup>th</sup> floor, BEST Officer Quarters , Pant Nagar, Ghatkoper -E, Mumbai-400075	9869268057	In-Charge of Renewable Power Procurement Dept.
Email ID: <a href="mailto:depp@bestundertaking.com">depp@bestundertaking.com</a>							

44	Desai U.N.	DE VIG(N)	Wadala	24172725	H11/202, Palm AcresCHSL, MhadaColo ny,Pratiksha Nagar SionEastMu mbai	986902984 7	In-Charge of Vigilance (North) Dept.
Email ID: <a href="mailto:devignorth@bestundertaking.com">devignorth@bestundertaking.com</a>							
45	Shaikh M.M.	DE VIG(S)	Colaba		503-A, Aman aprt. Hall Pakhadi Road, Christian Village, Kurla -W, Mumbai- 400070	9820236483	In-Charge of Vigilance (South) Dept.
Email ID: <a href="mailto:devigsouth@bestundertaking.com">devigsouth@bestundertaking.com</a>							
46	Essy S.K.	DETIE	Mumbai Central	23077670 23097698 7208836170	48/1A, ShaadResiden cy,19 th flr., Flatno.1904,E. S. Patanwala Rd.,Opp.Veer Mumbai027	9820039955	In-Charge of TIE Dept.
Email ID: <a href="mailto:detie@bestundertaking.com">detie@bestundertaking.com</a>							



**ANNEXURE- VIII**

**ADDRESS & PHONE NOS OF RECEIVING SUB-STATIONS**

<b>Sr. No.</b>	<b>Name of Existing RSS</b>	<b>Address</b>	<b>Telephone Nos.</b>
1.	APOLLO	B.E.S. & T. Undertaking, Apollo RSS Near Lion Gate, Shahid Bhagat Singh Rd. Mumbai 400 001.	22843650, 7208964243
2.	BYCULLA	B.E.S. & T. Undertaking, Byculla RSS Opp. Mafatlal Mill Gate No.2, Junction of E.S. Patanwalla Marg, Mumbai 400 027.	23723339, 7208964366
3.	BALLARD ESTATE	B.E.S. & T. Undertaking, Ballard Estate RSS Opp. New Custom Office, Shoorji Vallabhdas Rd. Mumbai 400 038.	22661696, 7208964244
4.	COLABA	B.E.S. & T. Undertaking, Colaba RSS, Colaba Bus Stn. Opp. Graduate Womens Hostel, Mumbai 400 005.	22150070, 7208964109
5.	DHARAVI	B.E.S. & T. Undertaking, Dharavi RSS Matunga Labour Camp, Near MSEB Office, Mumbai 400 019	24072793 7208969019
6.	ESPLANADE	B.E.S. & T. Undertaking, Esplanade RSS Opp. BEST Vidyut Bldg, Pathakwadi Lane, Off. Lokmanya Tilak Rd. Mumbai 400 002.	22087767, 7208964249
7.	GRANT ROAD	B.E.S. & T. Undertaking, Grant Road RSS Khetwadi 10th Lane, Nr Alfred Cinema, Mumbai 400 004	23824892, 7208964351
8.	KUSSARA	B.E.S. & T. Undertaking, Kussara RSS, Near Bijlee Bhavan, Opp. Mazgaon Dock, Kussara Bunder Rd, Mumbai- 400 010	3726398, 7208964364
9.	KINGSWAY	B.E.S. & T. Undertaking, Kingsway RSS BEST Workshop Gate No.2, Tilak Rd., Dadar T.T. Mumbai 400 014	24126637, 7208969014
10.	GIRGAUM	B.E.S. & T. Undertaking, Girgaum RSS Zaobawadi, Ram Mandir Jagannath Shanker Sheth Rd. Girgaum, Mumbai 400 004.	22016475, 7208964252
11.	MAHALAXMI	B.E.S. & T. Undertaking, Mahalaxmi RSS Near Sant Gadge Maharaj Chowk, (Saat Rasta), Sane Guruji Marg, Mumbai 400 011	23087229, 7208964367
12.	MAHIM	B.E.S. & T. Undertaking, Mahim RSS Near Amar Hind Mahal, Gokhale Road (N), Dadar (W), Mumbai 400 028.	24223484 7208969013
13.	MALBAR HILL	B.E.S. & T. Undertaking, Malabar Hill RSS Near Uphar Bldg. New Siri Road, Chiranjilal Loyalka Marg Mumbai 400 006.	23674865, 7208964352

14.	LOVE GROVE	B.E.S. & T. Undertaking, Love Grove RSS Love Grove Pumping Stn.,(MCGM) Dr. Annie Besant Rd. Worli,Mumbai 400 025.	24934567, 7208964368
15.	PAREL	B.E.S. & T. Undertaking, Parel RSS BEST Officers Qtrs. Next to BMCSchool, Saibaba Rd. Mumabi 400 012.	24715839, 7208969010
16.	BACKBAY 110KV	B.E.S. & T. Undertaking, Backbay 110kV RSS Backbay Veej Bhavan General Bhonsle Marg Mumbai 400 021.	22880948, 22843463 7208964102
17.	WADALA	B.E.S. & T. Undertaking, Wadala RSS near BMC Salt Pan Ppg. Stn., Opp. Block No.212, C.G.S. Colony, Sector II,Antop Hill, Wadala(E), Mumbai 400 037.	24013716, 7208969015
18.	WORLI	B.E.S. & T. Undertaking, Worli RSS Opp. Goodlas Nerolac Paint, Ganpatrao Kadam Marg, Mumbai 400 018.	24923853 7208964369
19.	MARINE DRIVE	B.E.S. & T. Undertaking, Marine Drive RSS Near Marine Drive Plaza Hotel,Behind Yashodhan Bldg. Dinshaw WachaRd., Mumbai 400 004.	22027617, 7208964247
20.	PRABHADEVI	B.E.S. & T. Undertaking, Prabhadevi RSS Opp.Passport Office, J.B. Temkar Marg,Worli, Mumbai 400 025.	24228367, 7208964371
21.	HUTATMA CHOWK	B.E.S. & T. Undertaking, Hutatma Chowk RSS Janmabhoomi Marg, Off.Dr. D.N. Rd Hutatma Chowk, Fort Mumbai 400 001.	22024673, 7208964245
22.	NARIMAN POINT 110 KV	B.E.S. & T. Undertaking, Nariman Point110Kv RSS Sakhar Bhavan, Ramnath Goyanka Marg Behind Oberoi Hotel, Nariman Point Mumbai 400 021.	22045011, 22044636 7208964103
23.	NAVAL DOCKYARD	B.E.S. & T. Undertaking, Naval Dockyard RSS Naval Dockyard – M.R.S.S. Premises of Indian Navy, Lion GateShahid Bhagat Singh, Colaba Mumbai 00 023.	22665597, 7208964242
24.	BOMBAY CENTRAL	B.E.S. & T. Undertaking, Bombay Central RSS, Potia Estate, Mumbai Central Bus Depot Bellasis Rd Mumbai 400 008.	23098439, 7208964355
25.	CUMBALLA HILL	B.E.S. & T. Undertaking, Cumballa Hill RSS, Opp. Neelamber Bldg. Altamount Rd., Cumballa Hill Mumbai 400 026.	23511317, 7208964353
26.	SITLADEVI	B.E.S. & T. Undertaking, Sitladevi RSS Prakash Narayan Kotnis Marg,Off. Lady Jamshedji Rd., Mahim Mumbai 400 016.	24461089 7208969017
27.	WORLI DAIRY	B.E.S. & T. Undertaking,Worli Dairy RSS Near Manav Mandir Bldg.Acharya Atre Marg, Worli, Mumbai 400 018.	24920054, 7208964370

28.	KHETWADI 110 KV	B.E.S. & T. Undertaking, Khetwadi 110kV RSS Khetwadi 10th Lane, Alfred Cinema Mumbai 400 004.	23853698, 3853683 23859417, 7208964104
29.	MAHIM CAUSEWAY	B.E.S. & T. Undertaking, Mahim Causway RSS 1504, Near BMC Sewage Pumping Stn., Mahim Reclamation, Mahim Causway Rd., Mumbai 400 016.	24461082 7208969018
30.	RAOLI HILL	B.E.S. & T. Undertaking, Raoli Hill RSS Premises of Raoli Hill Pumping Kokari Agar Rd., Antop Hill, Mumbai - 400 037.	24036639, 7208969021
31.	MASJID	B.E.S. & T. Undertaking, Masjid RSS Ibrahim Merchant Rd. Khadak Street, Mumbai - 400 009.	23455259 7208964250
32.	SION FORT	B.E.S. & T. Undertaking, Sion Fort RSS Opp. BMC School Sixteen Bunglow, Sion (E) Mumbai - 400 022.	24076096, 7208969022
33.	MUMBADEVI	B.E.S. & T. Undertaking, Mumbadevi RSS Off. Kalbadevi Rd. Inside Mumbadevi BMC Compound, Near Mumbadevi Temple, Mumbai - 400 002.	22421071 7208964251
34.	SEWREE	B.E.S. & T. Undertaking, Sewree RSS Prabodhankar Thakre Udyan Bus Stn. Acharya Donde Marg, Sewree, Mumbai - 400 015.	24129336, 7208969012
35.	G.T. HOSPITAL	B.E.S. & T. Undertaking, G.T. Hospital RSS, G.T. Hospital Compound, Badruddin Tayyabji Marg Opp. C.I.D. Office Mumbai 400 001.	22672350, 7208964246
36.	NEPEAN SEA	B.E.S. & T. Undertaking, Nepean Sea RSS Opp. Simla House, Near Godrej Baug, Off. Nepean Sea Rd Mumbai 400 036.	23677302, 7208964354
37.	DHARAVI PMGP	B.E.S. & T. Undertaking, Dharavi PMGP- 501 RSS Plot No. 501, Shatabdi Nagar Lane Behind Shivaji Vidyalaya Gate, Dharavi – Mumbai - 400 017.	24078807, 7208969020
38.	NAIR HOSPITAL	B.E.S. & T. Undertaking, Nair Hosp. RSS Behind Nurses Qtrs. Nair Hospital Premises, Dr. Anandrao L. Nair Rd., Mumbai 400 008.	23011057, 7208964363
39.	DR. BABASAHEB AMBEDKAR 110KV	B.E.S. & T. Undertaking, Dr. Baba Saheb Ambedkar 110 KV RSS Senapati Bapat Marg, near Ambika Mill Bus, Mumbai - 400 013	24955083, 24955084 7208969029
40.	KEM HOSPITAL	B.E.S. & T. Undertaking, KEM Hosp. RSS KEM Hospital Complex, S. S. Rao Road, Mumbai 400 012.	24157076, 7208969011
41.	NESTLE	B.E.S. & T. Undertaking, Nestle RSS Nestle Compound, Near Bombay Dyeing Mill, Pandurang Budkar Marg, Mumbai 400 013.	24334629, 7208964372

42.	NAVY NAGAR	B.E.S. & T. Undertaking, Navy Nagar RSS Near Kendriya Vidyalaya, Navy Nagar Mumbai 400 001.	22189000, 7208964105
43.	POCHKHANWALA ROAD	B.E.S. & T. Undertaking, Pochkanwala Rd. RSS,Plot no.-78 & 78APolice Constabulary Staff Qrts., Pochkhanwala Rd, Worli , Mumbai 400 018.	24974517 7208969319
44.	J.J. HOSPITAL	B.E.S. & T. Undertaking, J.J. Hospital RSS, J.J. Hospital premises, Ramchandra BhattMarg, Byculla, Mumbai 400 009.	23726431, 7208969030
45.	MAZAGAON DOCK	B.E.S. & T. Undertaking, Mazagaon Dock RSS Resident Area,Opp. Angre House, Gate No.1, Dockyard Rd., Mazgaon, Mumbai 400 010.	23781444, 7208964365
46.	TARDEO	B.E.S. & T. Undertaking, Tardeo RSS Pandey Compound bus Stn.,Naik Chowk Tardeo, Mumbai 400 009	23523773, 7208969023
47.	LALBAUG	B.E.S. & T. Undertaking, Lalbaug RSS Dattatraya Mahadev, Khamkar Marg, Lalbaug, Mumbai 400 12.	24713722, 7208969025
48.	STANDARD MILL	B.E.S. & T. Undertaking, Standard Mill RSS, Appasaheb MaratheMarg, Prabhadevi, Mumbai 400 025.	24365264 7208969024
49.	V.S.N.L.	B.E.S.T. Undertaking ,VSNL RSS Plot No – 1195 CS No. 77, Opp. Kirti College , K Dhuru MargPrabhadevi Mumbai 400028	24313646 7208969317
50.	SWAN MILLS ( Sewree )	B.E.S. & T. Undertaking, Ashok garden (formely Swan Mill) TokersiJivraj Marg, Sewree, Mumbai 400 015.	24188120, 7208969316
51.	NIMKAR MARG	B.E.S. & T. Undertaking, Nimkar Marg, 33kV RSS Near Navjeevan Co.Op.Hsg.Soc.,R.S.Nimkar Marg, TardeoDepot, Mumbai- 400 008.	23010339, 7208969026
52.	SIMPLEX MILL	B.E.S. & T. Undertaking, Simplex Mill RSS Godrej planet keshavraokhadye Marg, Byculla, Mumbai- 400 011	23020440 7208969027
52.	ELPHINSTONE MILL	B.E.S. & T. Undertaking, Elphinstone 33kv RSS, India Bulls financeCorp., Senapati Bapat marg, Mumbai 400 013.	24338111 7208969318
54.	MAZAGAON SHIPYARD NORTH	B.E.S. & T. Undertaking, Mazgaon Morlernisation Project, Dockyard, Mazgaon Mumbai 400 010.	HT Consumer
55.	APOLLO MILL	B.E.S. & T. Undertaking, Apollo Mill RSS, Lodha Primero,N.M.Joshi Marg, Chinchpokli (E) Mumbai-40011.	24188120, 7208969316

56.	MORARJEE MILL	B.E.S. & T. Undertaking, Morarjee Mill 33 kv DSS Ashoka Tower ( Centre Point ) Dr. B.A. Road, Parel Mumbai 400012.	23010339, 7208969026
57.	FUTUREX 33 KV RSS	B.E.S. & T. Undertaking, Futurex 33 kv RSS N.M.Joshi Marg, LowerParel Mumbai 400013.	23020440 7208969027
58.	PENINSULA LAND	B.E.S. & T. Undertaking, Peninsula 33 kv RSS. Ganpatrao KadamMarg, Lower Parel, Mumbai 400013.	24338111 7208969318
59.	JALAN MILL	B.E.S. & T. Undertaking, Ganpatrao Kadam Marg, Lower Parel,Mumbai- 400013.	HT Consumer
60.	NAMAN MID - TOWN 33 KV DSS	B.E.S. & T. Undertaking, Behind kamgar krida Bhavan, Senapati Bapat Marg, Mumbai 400028.	24188120, 7208969316
61.	AVIGHNA 33 KV DSS	B.E.S. & T. Undertaking, NewIslam mill compound Mahadeo Palav marg, Mumbai 400012.	23010339, 7208969026
62.	MAZGAON SHIP YARD RSS	B.E.S. & T. Undertaking, In the premises of Mazgaon Dock Ltd., South Yard, City Survey No. 247, Kussara Bunder, Mazgaon Dock, Mumbai – 400 010	23020440 7208969027
63.	PRATIKSHA NAGAR	B.E.S. & T. Undertaking, Plot / CS no. 4 (Pt),In front of Mala Garden, Pratiksha Nagar, Sion Mumbai-400 022	24338111 7208969318
64.	LODHA CROWN T-6	B.E.S.&T. Undertaking, New Cuffe Parade, In premises of Lodha Crown Building Pvt. Ltd. Building C, Wadala Truck Terminal,Anik Wadala Road, Mumbai - 400 37	HT Consumer
65.	ANTOP TERMINUS	B.E.S.T. Undertaking In the premises of Antop Hill Bus Terminus, Wadala East , Mumbai 400 037	

**ANNEXURE- IX**

**WARD WISE IDENTIFIED LOW LYING FLOODING PRONE AREAS**

<b>Sr. No.</b>	<b>Ward</b>	<b>Name of Road</b>	<b>Location</b>
	<b>A</b>	<b>Geeta Nagar</b>	--
1		Opp. Church	Near E.P. GNP-7
2		Near E.P. No. GNP/9	--
3		Opp. Geeta Nagar Library	Near E.P. GNP/29
4		Near Geeta Nagar School	Near E.P. No. GNP/35
		<b>Ambedkar Punarvasan</b>	--
5		Shri Sonu Kamble	Galli No. 3
6		Shri Sangram Suryavanshi	Galli No. 4
7		Near Saibaba Temple	--
		<b>Ganesh Murti Nagar</b>	Near opp. MP 501, 503 & 504
8	Shri Ratilal Sharma	Galli No. 3	
9	Near Nagori Garib Nawaz Milk Center	Galli No. 5	
10	<b>B</b>	Meisheri Road	Opp. Sandhurst Road Station (Nityanand Hotel)
11		Chinch Bunder B.I.T. Chawl	Chawl No. 5, 6, 7, 8
12		Mohammed Ali Road	Sydneham Compound
13	<b>C</b>	S.V.P. Road	Between Moli Talkies & Mirza Ghalib Market
14		C.P. Tank	Yagnik Chowk towards V.P. Road
15		Maulana Azad Road	Gol Temple to Yagnik Chowk
16		Eraskin Road	Yagnik Chowk to rear of Mirza Ghalib Market
17		Mitrasen Mahimtura Marg	Full Road
18		Sant Sena Marg	Full Road
19		Trimbak Parshuram Road	Full Road
20		Durgadevi Road	Joint of Trimbak Parshuram Road to Jn. of Mitrasen Mahimtura Marg
21	<b>D</b>	Petit Hall	Nepean Sea Road
22		Kashinath Compound	Nepean Sea Road
23		Oomer Park	Bhulabhai Desai Road
24		Breach Candy Hospital	Bhulabhai Desai Road
25		Nana Chowk	Nana Chowk Junction
26		Tardeo Circle	Tardeo Circle
27		Hotel Drum Beat	Tardeo Road
28		Grant Road Railway Station	Sleater Road
29		Band Stand, Chowpatty	Babulnath Road
30		Grant Road Railway Station (West)	Near Sonawala Bldg.
31		Alankar Cinema Junction	S.V.P. Road
32		Khetwadi Area, Khetwadi Back Road	R.R. Road
33		R.S. Nimkar Marg	--
34		Pande Girls High School	Patthe Bapurao Bridge Low Level
35		Crystal Hotel	Gilder Lane

36	E	J.J. Road	Opp. Police Station
37		Palace Cinema	--
38		T.B. Kadam Marg	Junction of B.A. Road
39		Dattaram Lad Marg	Junction of B.A. Road
40		Br. Nathpai Road	Albery Chowk
41		Sant Savata Low Level	--
42		Shravan Yashwante Chowk	Kalachowky
43		Shravan Yashwante Chowk	Kalachowky
44		Motisha Lane	Opp. Byculla Police Station
45		Hindustan Masjid	Byculla
46		Sankli Street	Jn. II & III Sankli Street
47		Nair Road	Agripada Police Station
48		Maratha Mandir Road	Bombay Central
49		Belasis Road	Alexandra Cinema
50		Chinchpokali Railway Station	--
51	F/S	Hindmata Cinema	Dr. B.A. Road
52		Jagannath Dhatankar Marg	--
53		Dattaram Khamkar Marg	--
54		Kalachowky near Sardar Hotel	Dr. B.A. Road
55		Zakeria Bunder	Cross Gully
56		Vitthal Chavan Marg	--
57		Dadasaheb Phalke Road	--
58		R.A. Kidwai Road	Junction Road No. 26
59		Sewree Cross Road, Gate No. 7	--
60	F/N	Laxmibai Kelkar Rd (Gandhi Market)	--
61		R.A. Kidwai Road, Wadala	Gate No. 4, Mangale Society
62		Dadar T.T. Circle	Junction of Tilak Rd & Jama Jamshet Rd
63		Vachharaj Lane	--
64		Mukhyadhapak Bhavan Rd No.6, Sion	--
65		Rajyogi Jaimai Singh Road	Gurunanak School
66		Bhau Daji Road (below bridge)	--
67		Hindu Colony, Lakhamsi NapooRd.	--
68		Road No. 16, Near LeprosyHospital	
69		Jayshankar Yagnik Road	Behind Gandhi Market
70		Shanti Nagar Slum	--
71		Koraba Mithagar Slum	--

72	<b>G/S</b>	N.M. Joshi Marg	Jagusheth Chawl , near curry road west JN
73		Fitwala Road	Nr. Elphiston Rd Rly Stn
74		Balushet Madurkar Marg	--
75		N.M. Joshi Marg	Gawade Chowk to Railway Workshop
76		Sakhubai Mohite Marg	N.M. Joshi Marg, B.D.D. Chawls
77		Pandurang Budhkar Marg	Near Gopal Nagar
78		Worli Naka	Near Prem Nagar
79		S.S. Amritwar Marg	Near Nehru Nagar
80		Khan Abdul Gaffar Khan Road	Near Godrej
81		T.H. Kataria Marg (East)	--
82	<b>G/N</b>	Veer Savarkar & L.J. Road Junction	Near Mahim Church
83		M.G Rd., Dharavi	Dharavi transit camp, Laxmibaug
84		Andhra valley Rd.	Matunga labour camp.



**The reporting protocol for interruption of Electric supply due to System Failure /Disaster**

Sr. No.	Nature of Off Supply/Disaster	Informing person	To be informed	Remark
1.	Off supply due to service cut out burnt, service failure, individual Off Supply, Partial Area/ Area off supply due to distributor/ service cable failure, 11/22/33 kV feeder tripping.	Fuse Controller, Fault Controller, Supervisory/ System controller	Regular Off Supply crew i.e. Fuseman, Mains Engineer & Fault Engineer.	Immediate action for restoration of supply by all concerned.
2.	Off supply after 2 hrs. Upto 4 hrs. due to service cut out burnt, service failure, individual Off Supply, Partial Area/ Area off supply due to distributor/ service cable failure, 11/22/33 kV feeder tripping.	Supervisory/ System controller	Concerned Divisional Engineers and above.	Concerned Divisional Engineer will post the details on VIP Whatsapp Group.
3.	Off supply above 4 hrs. due to service cut out burnt, service failure, individual Off Supply, Partial Area/ Area off supply due to distributor /service cable failure, 11/22/33 kV feeder tripping.	CEM	AGMES, DGMES.	Concerned Divisional Engineer will post the details on VIP Whatsapp Group.
4.	Switching OFF DSS due to water logging/ flooding for safety measures.	CEM	AGMES, DGMES, GM	Concerned Divisional Engineer will post the details on VIP Whatsapp Group.

5.	Building collapse / Fire to building / Fatal/ Non-Fatal electrical accident.	Supervisory/ System controller	Concerned Divisional Engineers and above.	Concerned Divisional Engineer will post the details on VIP Whatsapp Group.
6.	Building collapse / Fire to building / Fatal/ Non-Fatal electrical accident.	CEM	AGMES, DGMES, GM	Concerned Divisional Engineer will post the details on VIP Whatsapp Group.
7.	Major Off Supply due to multiple faults at one DSS / nearby DSSs resulting in DSS hanging.	Supervisory/ System controller	Concerned Divisional Engineers and above.	Concerned Divisional Engineer will post the details on VIP Whatsapp Group.
8.	Major Off Supply due to multiple faults at one DSS / nearby DSSs resulting in DSS hanging.	CEM	AGMES, DGMES, GM	Concerned Divisional Engineer will post the details on VIP Whatsapp Group.
9.	TPC failure /Grid failure / Off Supply for entire south/ north /entire Mumbai city due to any type of Disaster.	Supervisory/ System controller	Concerned Divisional Engineers and above.	Concerned Divisional Engineer will post the details on VIP Whatsapp Group.
10.	TPC failure /Grid failure / Off Supply for entire south/ north /entire Mumbai city due to any type of Disaster.	CEM	AGMES, DGMES, GM	Concerned Divisional Engineer will post the details on VIP Whatsapp Group.
11.	TPC failure /Grid failure / Off Supply for entire south/ north /entire Mumbai city due to any type of Disaster.	GM	Municipal Commissioner, Energy Minister, Chief Minister	Concerned Divisional Engineer will post the details on VIP Whatsapp Group.

**Names & Contact nos. of the Officers of Electric Supply Branch  
to be contacted during the emergency / disastrous conditions  
Operations & Maintenance Department (OFF supply)**

Name	Designation	Coverage Area	Contact no.	Mobile No. /Resi. No. / Email id.
Chougule N.N.	Chief Engineer (Maintenance & Work)	HOD for off supply Complaints for Mumbai City	22840942 22856262 Extn. 502	9969324485
			<a href="mailto:cem@bestunderking.com">cem@bestunderking.com</a>	
Fulpagare S.V.	Deputy Chief Engineer Distribution South	For Mumbai City (South Division) Off Supply Complaints	22154428 22153486 Ext. 102	9869870154
			<a href="mailto:dceds@bestunderking.com">dceds@bestunderking.com</a>	
Gunjal P.D.	Deputy Chief Engineer Distribution North	For Mumbai City (North Division) Off Supply Complaints	24102929	7710008156
			<a href="mailto:dcedn@bestunderking.com">dcedn@bestunderking.com</a>	
Kamble M.S.	Divisional Engineer Operation & Maintenance Central North	Byculla, Lalbaug, Mazgaon, Reay Road, Haji Ali, Worlgaon, Lower Parel, Mahalaxmi, Mumbai Central, Aurthur Road	24121740 24120301	9757092063
			<a href="mailto:demcn@bestunderking.com">demcn@bestunderking.com</a>	
Jogalekar S.D.	Divisional Engineer Operation & Maintenance North East	Parel, Kalachowki, Dadar, Kings Circle, Wadala, Antop Hill, Gandhi Market, Sion-Chunabhatti	24016611 24012951	9869035537
			<a href="mailto:demne@bestunderking.com">demne@bestunderking.com</a>	
Patil S.V.	Divisional Engineer Operation & Maintenance North West	Prabhadevi, Parel ST depot, Kabutar Khana, Shivaji Park, Shitaladevi, Mumbai Causeway, Dharavi, Matunga	24120301	7710956167
			<a href="mailto:demn@bestunderking.com">demnw@bestunderking.com</a>	
Kurade V.U.	Divisional Engineer Operation & Maintenance South	Navy Nagar, Nariman Point, Backbay, Marine Lines, Colaba, Crawford Market	22154428	9869065499
			<a href="mailto:dems@bestunderking.com">dems@bestunderking.com</a>	
Narkhede P.S.	Divisional Engineer Operation & Maintenance Central South	Mo. Ali Rd., Girgaon, Mumbadevi, Malabar Hill, Neapeansea Rd., Grant Rd., Khetwadi, Dockyard Rd., Nagpada	22073875	7506000722
			<a href="mailto:demcs@bestunderking.com">demcs@bestunderking.com</a>	

**Name & Contact nos. of the Officers  
Of Electric Supply Branch to be contacted during the emergency / disastrous conditions**

**Customer Care Department ( Complaints )**

Name	Designation	Coverage Area	Contact no.	Mobile No. / Resi. No. / Email id.
Chandankar G.G.	Chief Engineer Customer Care	A, B, C, D E, FN, FS, GN & GS Wards	22799563	9757435560
			<a href="mailto:cecc@bestundertaking.com">cecc@bestundertaking.com</a>	
Bansode S.S..	Deputy Chief Engineer Customer Care South	A,B,C & D Wards	22799512 228556262 Ext. no. 503	9757435560
			<a href="mailto:dceccs@bestunderking.com">dceccs@bestunderking.com</a>	
Talegaonkar A.R.	Deputy Chief Engineer Customer Care North	E, FN, FS, GN & GS Wards	24194681 24146262 Ext. 681	9819065801
			<a href="mailto:dceccne@bestunderking.com">dceccne@bestunderking.com</a> <a href="mailto:dceccnw@bestunderking.com">dceccnw@bestunderking.com</a>	

**Street Lighting Department (Complaints)**

Deshmukh D.S.	Deputy Chief Engineer Street Lighting	A, B, C, D E, FN, FS, GN & GS Wards	24116023 Ext. 503	9969007861
			<a href="mailto:dcesl@bestundertaking.com">dcesl@bestundertaking.com</a>	
Anwar M.K.	Divisional Engineer Street Lighting (Maintenance)	A, B, C, D E, FN, FS, GN & GS Wards	24101691 24123969 Ext. 501 23781839 23711942 Ext. 801	9869222159
			<a href="mailto:deslm@bestundertaking.com">deslm@bestundertaking.com</a> <a href="mailto:deslm@bestundertaking.com">deslm@bestundertaking.com</a>	