



**The Brihanmumbai Electric Supply
and Transport Undertaking
(of The Brihan Mumbai Mahanagarpalika)**

**Disaster Management Protocol
booklet 2021-22**

Electric Supply Division

INDEX

<u>Sr.</u>	<u>Description</u>	<u>Annx.No</u>	<u>Page No</u>
1	Introduction	--	1 to 8
2	Operations & Maintenance Zones & MCGM Wards Map of Mumbai	I	9
3	Map showing power supply arrangement for BEST Undertaking	II	11
4	List of officers of Operations & Maintenance Division	III	13 to 15
5	A Grade officers (A 4 & A 5) residing in our area of supply	IV	16
6	List of Essential feeders	V	17 to 25
7	Booking of A & B Grade officers at various receiving stations during emergencies / Disaster of large magnitude	VI	26 to 27
8	Electric Supply – Address & Telephone Numbers of Senior Officers (Grade A 3 & above)	VII	28 to 33
9	Address of receiving sub-stations	VIII	34 to 38
10	Ward Wise Possible Flooding Spots	IX	39 to 40
11	The reporting protocol for interruption of Electric supply due to System Failure /Disaster	--	41 to 42
12	Off Supply Complaints Operations & Maintenance Division	--	43
13	Customer care Division (Billing Complaints) Street Lighting (Complaints)	--	44

Brihan Mumbai Electric Supply and Transport Undertaking (BEST) distribute electric supply within the old city limits of Mumbai and runs Public Transport in the Greater Mumbai region. This write up is about the disaster management plans for the electric supply distribution.

2. Introduction:

BEST gets all the power from M/s. Tata Electric Company at 110kV, 33kV or 22kV and distributes the Energy from Colaba to Haji Ali / Byculla in South zone and Byculla / Haji Ali to Sion, Chunabhatti/ Mahim in North zone as shown in Annexure-I. A map showing the power system arrangement is attached as Annexure-II. The statistical data of Receiving Substations, Distribution Substations, Cables, Consumers etc. in Electric Supply Division as on **31st March 2021**, is as follows:-

Description	Numbers
No. of receiving substations	64
No. of power transformers	153
No. of distribution substations	2448
No. of distribution transformers	3294
Length of cables (EHV, HV and LV cables in kms)	11916
No. of consumers (in lacs)	10.44

To avoid failure of electric supply even for few minutes, BEST has evolved very systematic and time-tested procedures and arrangements for attending to all types of breakdowns.

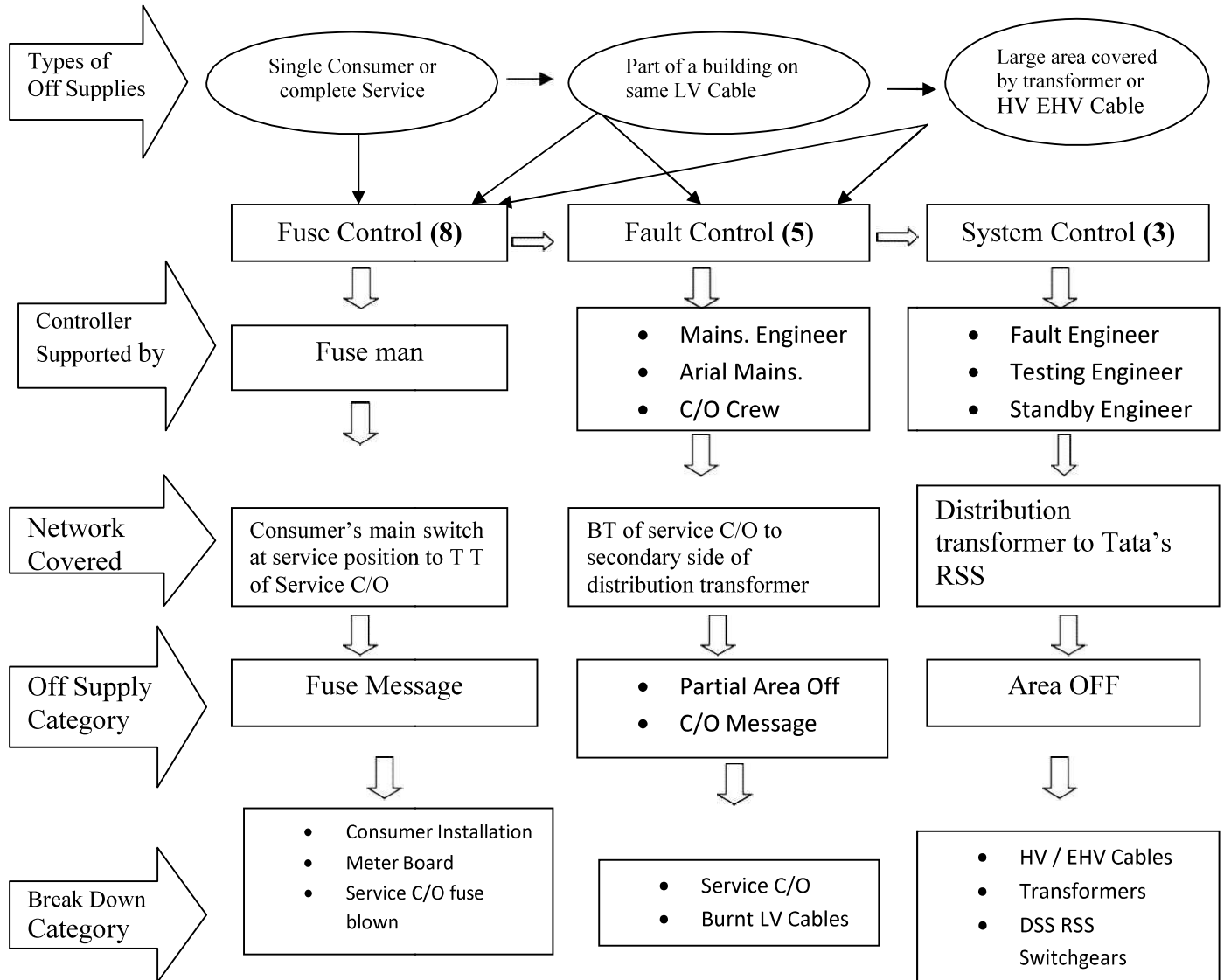
It is our experience that major floods occur in Mumbai once or twice in some years, when there will be innumerable breakdowns. In such cases, we divert officials from other non-emergency departments to deal with the situation. The BEST operation and maintenance system is capable of dealing with all the increased breakdowns, though the restoration of supply will take some more time during flood and riot situations. Also, in cases such as floods, fire etc. there will be two contradictory requirements of switching off supply to the areas affected by shocks, fire etc., and restoring supply when these conditions subside. Hence the nature of actions to be taken varies from situation to situation, and calls for discretion and judgment by experienced engineers. With the present set up of control centers and operating personnel with vehicles, BEST is in a position to deal with these situations, if necessary by diverting additional staff from non-emergency departments. This is possible, because Electric Supply Branch ensures that all the technical personnel are trained to do emergency jobs, by a flexible transfer policy.

For enabling the control centers to arrive at the correct decision on action, it will be highly beneficial if the consumers are in a position to give information on the extent of supply failure, i.e. whether only their building is affected, or more buildings are affected or the entire area is affected. If the consumer gives wrong information, it may delay the restoration, as the different section personnel may get deployed for the job initially. In case of tripping in receiving stations, the controls will automatically get information through the SCADA system, and Fault Engineer will move into action.

3.0 Coordinated functioning of various Control Rooms for faster restoration of Electric Supply

We have three types of Control Rooms viz. System / Supervisory Controls, Fault Controls and Fuse Controls. The schematic showing the movement of OFF Supply messages through these Control Rooms, to the respective sections which have to take actions for restoration of supply, is as follows:

Coordinating functioning of various Control Rooms for faster restoration of Electric Supply



From the operational point of view, the Operation & Maintenance department of the Electric Supply Division of BEST is divided into five Zones viz. South (S) Zone, Central South (C/S) Zone, North West (N/W) Zone, North East (N/E) Zone and Central North (C/N) Zone.

The main control rooms of Electric Supply Division are divided mainly into 3 controls, i.e. System Control in South zone covering the entire operations of the South & Central South zone from Colaba to Byculla / Haji Ali and Supervisory Control in North zone covering the entire operations of the North West, North East i.e. Haji Ali to Chunabhatti / Mahim & Zonal Control Center (ZCC) covering the entire operation of Central North zones i.e. from Byculla-Haji Ali-Mumbai Central to Lalbaug-Worli Byculla. These three are the highest Control Centers, but as a routine, they look after only High Voltage system operations / breakdowns and reporting to management on all aspects of the system by taking input from other controls downstream.

These Controls are manned by Super Controller (Asst. Engineer) / System Controller and Supervisory Controller (Dy. Engineers) respectively. They are assisted by Assistant Controllers (Charge Engineers). Both the Controllers and Assistant Controllers are working in all the three shifts. System and Supervisory Controller mainly deals with the communication with the Fault Engineers and mains engineers and reporting to Sr. Officers. Asst. Controllers carryout the duties of receiving messages, writing messages, computerized reports and follow-up with the operational staff and taking feedbacks. The Offices of Operation & Maintenance Departments are situated nearer to these Control Rooms in both the zones.

For restoration of Electric Supply , we have 8 Fuse Controls, 5 Fault Controls and 3 System / Supervisory/ Zonal Control Centers established and all details alongwith locations and telephone nos. are furnished.

All types of emergencies involving Receiving Sub-stations and distribution Sub- stations are conveyed to the Fault Engineers working in all the three shifts through System Control and Supervisory Control.

All other breakdowns and problems in the low voltage systems like supply failures; shock, fire, restoration of the off supply areas by giving temporary supply etc. are attended by Mains Engineers who are deployed through Fault Controls in all the three shifts. The Fuse Controls deploy Fusemen who can attend to supply failures due to blowing of fuses at meter rooms of the consumers, and problems connected with meters. They also take action in case of fire , shock etc. on the meter boards and in the installation. All the control rooms have the system of logging all the messages received and feedback of attending the message is also recorded in the respective controls. There is a system of reporting all the major messages to the senior officers to the Electric Supply Branch every morning and also during the working days and holidays round the clock.

For cases of OFF Supply durations exceeding 2 hours, there are well defined instructions for escalating the matter to senior officers, which are as follows :

OFF Supply duration	Escalation
2 to 4 hours	Concerned Assistant Engineer or Superintendent Engineer of respective O&M Department
4 to 6 hours	Divisional Engineer of respective O&M Department
Above 6 hours	Deputy Chief Engineer of respective O&M Department and other senior officers

The telephone numbers of various control centers, for electric supply restoration and emergency jobs of BEST, are given below. The last 4 digit numbers of these control centers are unique and hence can be remembered easily by contacting personnel.

South Zone : (Colaba to Byculla / Haji Ali)

System Control		22083788, 22082875, 22067893 , 22078865 Ext. 747
		7304456077 (only SMS)
Fault Control		22066611 , 22066661 , 22078865 Ext. 748
Fuse Controls	Pathakwadi	22084242 , 22084243 , 22066351, 22060551, 22010578 Ext. 713 7208964090, 7304456084 (SMS)
	Colaba	22184248, 22184242 , 22156749 ,22184246 8828871649 (whatsapp), 7304456083, 7208964089 (SMS)
	Masjid	23474242, 23454297, 23474008, 23474009, 23474010, 23474011 7208964091 (SMS)
	Tardeo	23094242 , 23018169, 23094242, 23026831, 7208964092, 7304456090 (SMS)

North Zone : (Parel /Worli/Haji Ali/Sewree to Sion Chunabhatti / Mahim/Dharavi)

Supervisory Control		24186200, 24145888 , 24123285	
		7304456176 , 7304456079 (SMS)	
		8828830288 (Whatsapp)	
Fault Control	Dadar (N/E)	New Mahim (at Mahim RSS) (N/W)	Dharavi (at Dharavi Bus Depot)
	24146611	24326611	8657448054
	24146683	24326612	8657448055
	24101788	24326613	8657448059
	7304456080, 7208992913 8828830283	7208964084 8828830285 Whatsapp	8828830284 (Whatsapp)
Fuse Controls	Dadar	24124242, 24124673	
		7208992912, 7208992908 (SMS)	
	Mahim	24444242, 24314242, 24314240, 8657448060, 8657448061, 8828871657 (Whatsapp)	
		24954242, 24953363, 7208964294, 8828847567 (whatsapp)	
	Suparibaug	24114242, 24161217, 7208964095, 8828871641 (whatsapp)	

Central North Zone : (Byculla-Haji Ali-Mumbai Central to Lalbaug-Worli)

Zonal Control Centre North ZCCN)		24975888 , 24962122, 24962133, 24962155
		7208964101, 7208992921, 7208992923, 7304456189 8828830286(whatsapp)
Fault Control Dadar (CN)		24117754
		7208992927, 7208964083 , 8657859171
		8828871654 (Whatsapp)
Fuse Control	Worli	24954242, 24953363,
		7208964294, 8828847567 (whatsapp)
	Suparibaug	24114242, 24161217,
		7208964095, 8828871641 (whatsapp)
BEST Twitter Account :-		@ my BEST Electric

4.0 Contingency Plans for major failures :

The Contingency Plans for faster restoring the electric supply in case of all the EHV feeders and Power Transformers, showing the network operations to be carried out, are well documented and are being updated time to time.

In case of major failures brought about by manmade or natural disasters, the priority will be safe guarding the distribution system to prevent shock, fire etc. by switching off and isolating wherever required, and restoration of supply to essential consumers like hospitals and municipal pumping stations. A list of such essential feeders / consumers is attached as **Annexure-V**.

Preparations prior to monsoon season :

As a precautionary measure prior to start of the monsoon season the various activities are being carried out by Operation & Maintenance Department in order to safeguard the Receiving Substation (RSS) and Distribution Substations (DSS) and the equipments therein. The list of such activities is given below:-

- i. As regards the Pillars, Distribution Transformers, Distribution Substations and Receiving Substations in low lying areas:
 - a) We have identified flooding prone areas and roads in our area of supply. In such areas when water levels rise, electric supply is disconnected selectively in order to avoid loss of life due to electrocution. In this situation, continuous monitoring of water level by our Controls in co-ordination with MCGM and Fire Brigade.
 - b) After the water level recedes electric supply to such areas is restored in a gradual manner. List of identified low lying flooding prone areas is attached vide Annexure - IX.

In case of dilapidated substations which require repairs, are monitored continuously and in case of substation failure alternate arrangements of supply restorations are made.

- ii. Roof cleaning of RSS and DSS
- iii. Inspection of storm water drains of RSS and letters to MCGM for cleaning the same, if necessary.
- iv. Inspection of DSS where in previous year the problem of water leakages were observed and inform the same to Civil Engineering Department of the Undertaking.
- v. Provisions of tarpaulin, Bakelite sheets above the equipments wherever necessary.
- vi. Providing heaters in RSS where there is a problem of moisture absorption in the bus bar compartment of switchgears to avoid flashovers.
- vii. Advertisement in the local newspapers for precautions to be taken during the monsoon season of their installations and service position and the necessary information regarding the contact personnel about the complaints to controls in their respective areas.

6.0 Standby arrangement of officers for emergency duties:-

The Electric Supply Division is presently headed by Assistant General Manager (Electric Supply). He reports to the General Manager of the Undertaking. AGM(ES) is assisted by 4 Chief Engineers viz. Chief Engineer (Maintenance & Works), Chief Engineer (Customer Care), Chief Engineer (Regulatory Cell) & Chief Engineer (Planning). Most of the technical personnel in Electric Supply Branch get trained in emergency and maintenance activities. All the Senior Officials of Electric Supply branch of BEST, especially those heading the Operation and Maintenance Departments under them, are available for assistance round the clock and as we say in BEST, "all officers are on duty for 24 hours". The names and telephone numbers of officers of Operation & Maintenance department, directly concerned with the restoration of supply in case of breakdowns and emergencies, are given in **Annexure-III**.

The names and telephone numbers of other 'A' grade officers, who reside in city limit, are given in **Annexure - IV**.

The Electric Supply Division is also having a plan for posting the officers in Grade A-4 and A-5 in addition to the officers posted at various Receiving Substations for 24 hours in case of emergencies. The list of such 'A' & 'B' Grade officers is given in **Annexure- VI**. Telephone numbers of all the Senior Officers from AGM(ES) to Divisional Engineers are given in **Annexure-VII**. The list of Receiving Substations with phone numbers is given in **Annexure-VIII**.

7.0 Coordinating Officers at MCGM Control Room in case of Disaster:

The coordinating officer who will report to Disaster Management Control Room of Municipal Corporation of Greater Mumbai at their Headquarters and who will be coordinating with BEST Officers are as follows:

Name	Place of Residence	Telephone Nos.	
		Mobile	Office
Co-ordinating Officers :			
V.W.Manukar	Parel Qtrs.	9869270920	23711941 Ext. 510
G.R.Bains	CUMBALLA HILL	9967440695	24190145
M.M.Salve	Sitladevi Qtrs.	9820591251	22880950 Ext. 102
M.M.Davre	Sitladevi Qtrs.	9869564612	22856262 Ext.527

8.0 Protocol for activating Disaster Management Plan:

It can be seen that BEST is an organization well prepared to meet all types of emergencies. One can be sure that Electric Supply Wing of BEST will carry out whatever is expected of it, as dictated by the nature of the disaster and the needs of the situation.

The message received from the Disaster Management Control Room of MCGM or from any other Agency to the System / Supervisory Control will be conveyed immediately to the Operational Staff for their action and to the Senior Officers of Electric Supply Division. The details of message and timing of receipt of message will be logged in respective Control Rooms.

Depending upon the nature of emergencies such as fire, flood, collapse of building due to earthquake etc., the fault engineers, mains engineers will rush to the sites and the 'A' Grade Officers in-charge as mentioned in **Annexure-IV** will take charge of the situation at site for giving necessary instructions to the staff. The main function of this staff at site is to switch off the electric supply of the affected areas in order to avoid the further damages. The Officers at site, Fault engineers, Mains engineers will be always in co-ordination with the respective Control Rooms with wireless sets fitted in vehicles, static Wireless sets in Control Room, walky-talky etc. Depending upon the severity of incidence, the emergency officers mentioned in **Annexure-VI** will be booked at the respective RSS and fault controls and fuse controls for co-ordination with the operating staff and the consumers.

During the emergency the System Control Room in South zone and Supervisory Control Room in North zone will be headed by the Dy. Chief Engineer (Distribution South) and Dy. Chief Engineer (Distribution North) respectively who will have the overall control over the Control Rooms and operation of the staff. They will be also in contact with the Police, Fire brigade and MCGM authorities for their help. The Divisional Engineers of non-emergency department like Erection, Construction divisions will have a monitoring role during the emergency over the operations of the staff under their divisions. The vehicles of these divisions will also be utilized for emergency duties. After attending the emergencies, the necessary feedback will be given by Operational Staff to the Control Room, which will be conveyed to all Senior Officers of Electric Supply Division and the General Manager. The next step will be the restoration of the electric supply whenever the situation is normalized.

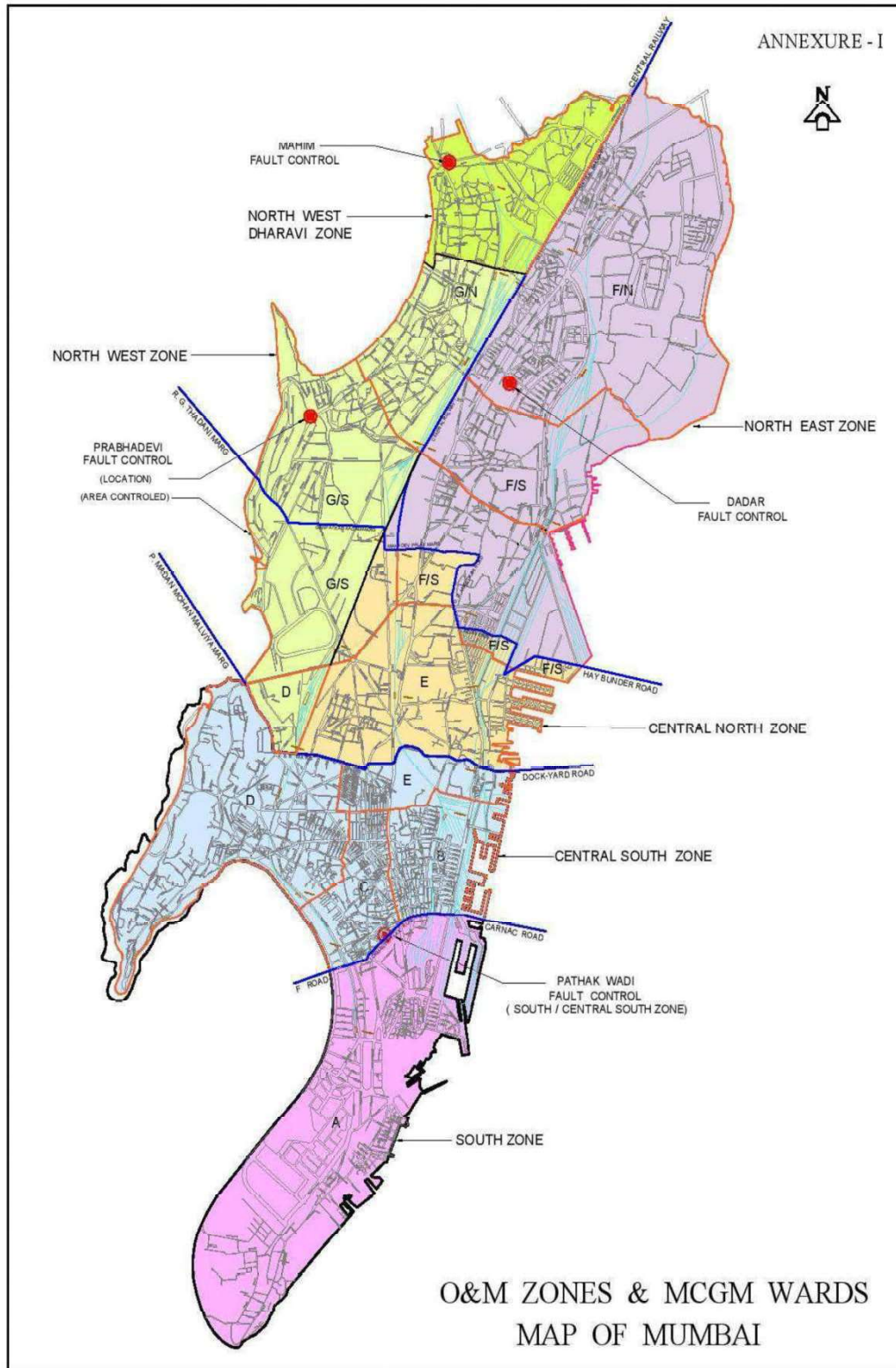
9.0 Communication:

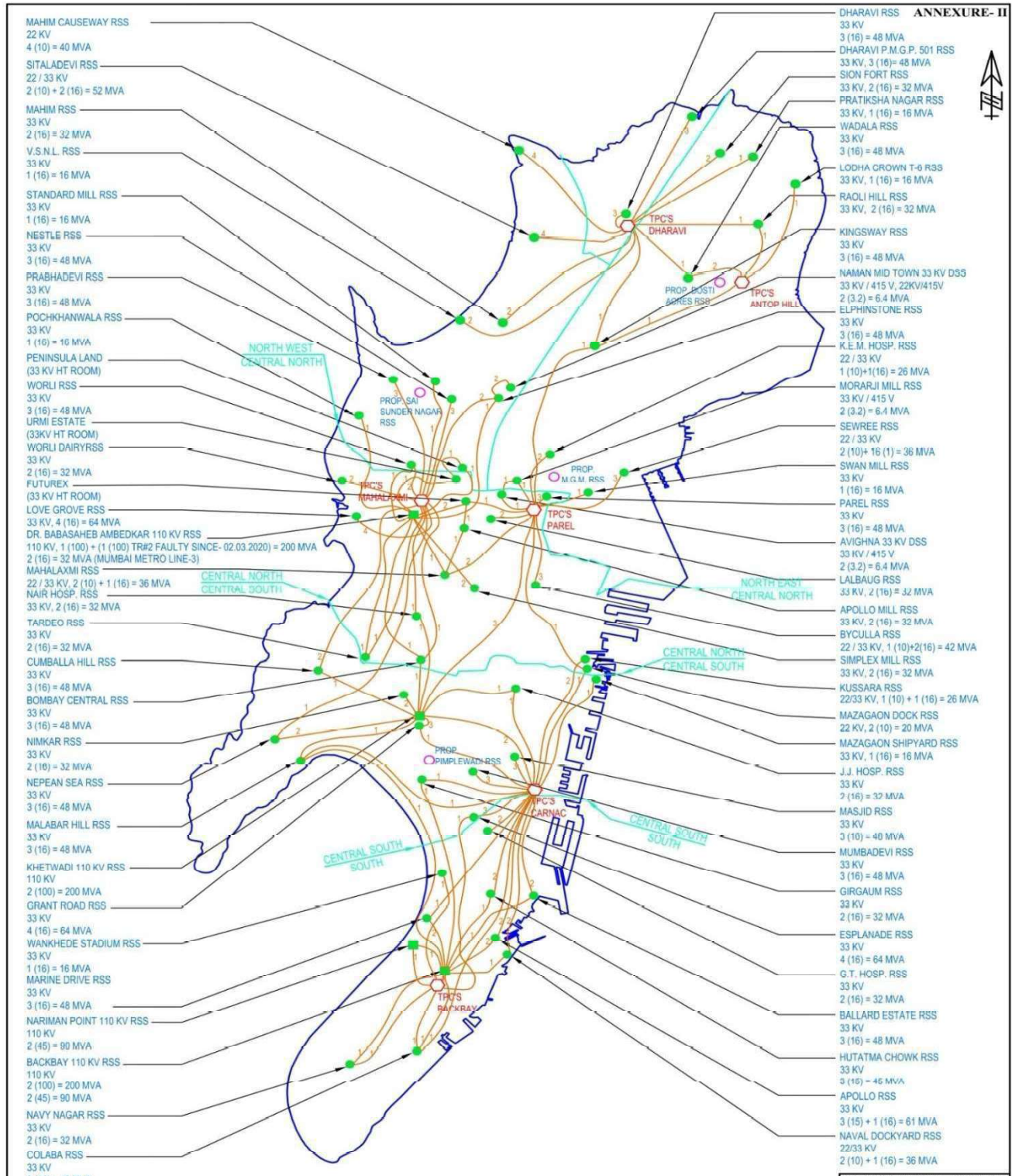
Communication is one of the important aspects in any disaster management. All the 60 RSSs are provided with the MTNL Telephone Lines. The Supervisory Control, System Control and Fault Controls are provided with MTNL, Tata telephone lines, the static wireless sets and hot lines. The emergency vehicles are fitted with the wireless sets. Walky-talkies are also provided to fault engineers.

10.0 Redundancy:-

The redundancy in the electrical system is required to be built so that enough spare capacity is available whenever there is a non-availability of equipment and cables due to faults or outages due to normal maintenance. The Electric Supply Division has its norms well defined in order to maintain the reliability of the Electric Supply. The sufficient redundancy is provided in H.V. / L.V. networks in order to transfer the loads and to minimize interruption of supply. This is achieved by the optimum loading of distribution and power transformers keeping down the low distribution loss. The Electric Supply division is also maintaining the sufficient stock of various equipments, which are being utilized for distribution of electricity to the consumers. Depending upon the consumption level, the tenders are invited for procurement of various types of equipments annually or biennial.

11.0 However, the Island City of Mumbai has no duplicate feed in the event of complete failure of TPC's Generation which is presently the only source of supply.





<p>LEGENDS :</p> <ul style="list-style-type: none"> ● BEST EXISTING 22/33 KV REC. SUB-STN. ○ BEST PROPOSED REC. SUB-STN. ■ BEST EXISTING 110 KV REC. SUB-STN. ○ TPC'S 110 KV REC. STN. 		<p>DRN BY : U.P. S. S.</p> <p>CHD BY : A.P. GORE</p> <p>AEPRO : V.S. GUGNAN</p>	<p>SPRO. : ART</p> <p>DCEPL : -</p>	<p>DRG. NO. : SK / PRO (2010) 11</p> <p>SCALE : N.T.S.</p> <p>DATE : 25.02.2010</p>	<p>TITLE : MAP SHOWING POWER SUPPLY ARRANGEMENT FOR B.E.S.T.</p>	<p>PROJECT DEPARTMENT THE B.E.S.T. UNDERTAKING 2nd Floor, Backbay Veej Bhavan, Plot No. - 149/150, General Jagannath Bhosale Marg, Mumbai- 400 021.</p>
---	--	---	---	---	--	---

UPDATED AS ON :- 03.02.2021

D:\01 DRAWING OFFICE\52 GENERAL\03 C-PROSK-PRO (2010) 11 (SUPPLY OF BEST)UPTO 03.02.2021 FOR BULLETIN.dwg

List of Officers of Operation & Maintenance Divisions

Name	Designation	Telephone Nos.		Responsibilities
		Residence/ Mobile	Office	
South, Central South, Central North, North West & North East				
R.U.Patil	CEM	9869354174	22883280	In-charge of Distribution of South & North
P.P.Kulkarni	DCEDN	9869451826	24102929	In-charge of overall control of HV/LV distribution of all North Zones. In-charge of liaison with police control, fire brigade and MCGM authorities for necessary help.
Vacant	DCEDS		22080524 Ext. 800/801	In-charge of overall control of HV/LV distribution of all South Zones. In-charge of liaison with police control, fire brigade and MCGM authorities for necessary help.
Operation & Maintenance South				
N.M.Herlekar	DEMS	9869410254	22154428 22153486	In-charge of South Zone
S.P.Kulkarni	Ag.SMS2	9869246017	22153486	HV Supply Restoration, RSS Maintenance & Manning
P.R.Sonawane	SMS3	7506868589	22153486	Static I & II, Stores, Assets Management, Departmental Stores, Fault Control, LV Supply Restoration, LV Load & LV Scheme Preparation
S.S.Kamble	AEMS1	8879529371	22153486	Testing, Permanent Repairs, Pillar, Scheme Execution Maintenance & All Vehicles

Name	Designation	Telephone Nos.		Responsibilities
		Residence/ Mobile	Office	
Operation & Maintenance Central South				
A.V. Naik	DEMCS	9869427564	22080524 Ext.741	In-charge of Central South Zone
Vacant	SMCS1	--	22080524 Ext.743	--
Vacant	SMCS2	--	22080524 Ext.791	--
M. R. A. Sayani	SMCS3	9892303319	22080524 Ext.742	Static II , Departmental stores, HV Supply restoration, RSS Maintenance
S. M. Deshmukh	SMCS4	9869934711	22080524 Ext.744	LV Loads, Scheme preparation & Assets Management of Computers, Sand activities & System Control, Monthly MIS, Static I
V. Y. Gode	Ag. AEMCS3	9869283201	22080524 Ext.745	LV Supply restoration, & Temp. Supply, LV Loads, Scheme Preparation & Assets Management.
M. N. Nagare (On Loan)	AEMCS1	9594931968	22080524 Ext.792	Pillar Maintenance & Scheme Execution
Vacant	--	--	22080524 Ext.746	--
A.S.Ali	AEMCS2	8097806667	22080524 Ext.792	Testing & Repairs Section
Operation & Maintenance Central North				
S.R.Chavan	DEMCN	9819908070	22141740 24120301	In-charge of Central South Zone
A.V.Kale	SMCN1		24121740 24120301	HV Supply Restoration & Testing
P.P.Sonawane	SMCN2	9967178705	24121740 24120301	DSS Maintenance (Static I & II)
S.M.Taur	AEMCN1	9969011671	24121740 24120301	Permanent Repairs Section, Scheme Execution
S.D. Suryavanshi	AEMCN2	7506692505	24121740 24120301	Pillar Maintenance, Fault Control & ZCC
H.G.Surti	AEMCN3	9029219435	24121740 24120301	LV Loads & Schemes preparation, LV Mains., NM & Assets Management
S.D.Beale	Ag. AEMCN4	9812134363	24121740 24120301	RSS Maintenance

Name	Designation	Telephone Nos.		Responsibilities
		Residence/ Mobile	Office	
Operation & Maintenance North West				
N.P.Jagaldas	DEMNW	9820654161	24313850	In-charge of North West Zone
D.R.Jamghare	SMNW1	9967468906	--	HV Supply Restoration & Testing
N.M.Wayal	SMNW2	8097016868	24314888	Dharavi LV Supply Restoration section, Temporary Supply, Loads, SIMHA scheme execution & Pillar Maintenance
D.S.Deshmukh	SMNW5	9969007861	9029011394	RSS Maintenance, & Static I & II
P.B.Gadankush	AEMNW1	9768236336	24314888	Repairs & Scheme execution
S.V.Patil	AEMNW2	7710926167	24314888	LV Supply Restoration section, Temporary Supply & DG Set, LV Loads & Scheme Preparation, NM & Assets Management
Operation & Maintenance North East				
P.D.Gunjaj	DEMNE	9920472348	24012951	In-charge of North East Zone
S.D.Joglekar	AEMNE1	9869035537	24071664	RSS, R & M, HV Supply Restoration, Testing
S.G.Purnadare	AEMNE2	9819148149	24071664	LV Supply Restoration, Load sheet, DG Set & DFC Temp. Supply & Asset Management
S.D.Lokhande	AEMNE3	9869053327	24071664	Permanent Repairs & Scheme Preparation, Monorail Chowkey.
K.A.Dadmal	AEMNE4	9594423757	24071664	Pillar Maintenance, Scheme Preparation, MV Driver allocation including hiring of vehicles from outside parties
S.A.Khatik	Ag. AAEMNE5	9967861597	24071664	Static I & II , MIS & Statistical Data.

ANNEXURE IV

A Grade Officers (A-4) & (A-5) residing in our area of Supply

Sr.	Name	Grade	Department	Cell No.	Res. Tel.	Res. Location
1	V. W. MANUKAR	Supdt.	ERECTION NORTH (W/S)	9869270920	--	PAREL QTR
2	M. A. R. A. SAYANI	Supdt.	O & M (CS)	9892030319	23052208	MUMBAI CENTRAL QTR
3	S. S. SAMUDRA	Supdt.	T & E	9757393550	--	CUMBALA QTR
4	M. M. SALVE	Supdt.	DCECC (S)	9820591251	--	SITLADEVI QTR
5	M.M.DAWARE	Supdt.	Power Purchase	9869564612	--	SITLADEVI QTR
6	M .Y .SHETHWALA (Due for superannuation w.e.f.01.09.2021)	Suptd.	ERECTION NORTH	9819765152	23771980	J J HOSP ITAL
7	RAJENDRA B. GHATE	Suptd.	CC (D)	9969010219	24105771	MATUNGA QTR
8	A. S. ALI	A. E.	O & M (CS)	8097806667	--	MORELAND QTR
9	G. S. BAINS	A. E.	SYS. PROT.	7967440695	--	CUMBALA QTR
10	D.R.CHORMALE	A.E.	CECC'Ss off. On Loan to DCEDN office	9867998639		SION FORT
11	A.B. SHINDE	A.E.	CC (F/S)	9869454302	--	MATUNGA QTR
12	B. S. KAMBLE	A.E.	CC (B)	9869034874	--	CUMBALA QTR
13	SANJEEV S MAIRH (Ag.Suptd.)	A.E.	PM	9892687236	24464323	CHUNNABHATI
14	S. N. INCHANALKAR (Ag.Suptd.)	A.E.	CC (C)	9869754601	--	SUPARI BAUG QTR
15	S.D.JOGLEKAR	A.E.	Power Mngt.	9869035537	--	LOVE GROVE QTR
16	T.N.SHEKOKAR	A.E	ERECTION SOUTH			CUMBALA QTR

LIST OF ESSENTIAL FEEDERS (NORTH EAST)**KINGSWAY RSS**

SR.	ESSENTIAL CONSUMER	NAME OF DSS	11 KV FEEDER	TR. NO.
1.	Supervisory Control	Bus Garage	KG 1.2	1
2.	Kingsway R.S.S.	Kingsway Static	KG 3.7	3
3.	Traffic Control	Wadala Depot	KG 1.5	1
4.	Matunga Air Compressor (HV)	Matunga Air Compressor (HV)	KG 2.1	2
5.	Wadala PPg (HV)	Wadala PPg (HV)	KG 3.2	3
6.	Hindustan Petroleum	Hindustan Petroleum	KG 2.4	2
7.	Wadala Tel. Exchange (HV)	Wadala Tel. Exchange (HV)	KG 3.5	3

SION FORT RSS

SR.	ESSENTIAL CONSUMER	NAME OF DSS	11 KV FEEDER	TR. NO.
1.	Sion Tel. Exch. (HV)	Sion Tel. Exch. (HV)	SF 1.2	1
2.	Tilak Hosp.	Tilak Hosp.	SF 1.3	1
3.	Lion Centre	Lion Centre	SF 1.5	1
4.	Sion Fort R.S.S. & Lion Centre	Sion Fort	SF 1.5	1
5.	Sion Hospital	Sion Hospital	SF 1.5	1
6.	Koliwada Ppg. Sion PPS	Koliwada Ppg.	SF 2.1	2
7.	Somaiyya Ayurvihar (Hosp.)	Somaiya Trust	SF 2.3	2
8.	Chunabhatti BMC ppg.	Duncan causeway (HV)	SF 2.6	2
9.	Duncan Sewage Ppg. (MCGM)	Duncan Sewage Pumping	SF 2.5	1
10.	Air Force Qtrs.	Air Force Qtrs. (HV)	SF 1.7	1

WADALA RSS

SR.	ESSENTIAL CONSUMER	NAME OF DSS	11 KV FEEDER	TR. NO.
1.	Salt Pan Ppg.	Salt Pan Ppg.	WD 1.1	1
2.	Kikabai Hospital Trust	Kikabai Hospital Trust (HV)	WD 1.3	1
3.	IPR Office	IPR Office	WD 2.3	1

RAOLI HILL RSS

SR.	ESSENTIAL CONSUMER	NAME OF DSS	11 KV FEEDER	TR. NO.
1.	Raoli Hill PPG	Raoli Hill PPG	RH 2.3	2
2.	Anik CNG Plant,	Anik No. 1	RH 1.4	1
3.	Mahanagar gas	Mahanagar gas	RH 1.4	1

LODHA CROWN RSS

Sr.	ESSENTIAL CONSUMER	NAME OF DSS	11KV FDR NO.	TR. NO.
1	CEC Metro	CEC Metro	-----	1

DHARAVI RSS

SR.	ESSENTIAL CONSUMER	NAME OF DSS	11 KV FEEDER	TR. NO.
1.	SionHospital	Sion Medical	DH 1.3	1
2.	Kikabai Hosp./ SionHospital	Kikabai Hosp./ SionHospital	DH 2.5	2
3.	Dharavi R.S.S.	ShalimarInd. Est.	DH 3.4	3

MAHIM C'WAY RSS

SR.	ESSENTIAL CONSUMER	NAME OF DSS	11 KV FEEDER	TR. NO.
1.	Mahim C'Way R.S.S. & New Diabatic Association.	Mahim C'Way Static	MC 4.4	4

SITALADEVI RSS

SR.	ESSENTIAL CONSUMER	NAME OF DSS	11 KV FEEDER	TR. NO.
1.	Sena Bhavan & Shushrusha Hosp.	Anand Van	ST 2.3	2
2.	MahimVillage Hosp.	MahimVillage Hosp.	ST 3.2	3
3.	Hinduja Hosp.	National Hosp. Annex (HV)	ST 3.3	3
4.	New Tulasi & BPL Centre (HV)	Mahim Ppg. /HV	ST 4.2	4
5.	Mayors Bungalow & Sitaladevi RSS	Cadell Rd.	ST 4.4	4
6.	HindujaHospital	National Hospital	ST 4.7	4
7.	New Dadar Purification (HV)	New Dadar Purification. (HV)	ST 2.5	2
8.	ShivajiPark Tel. Exch.	Shivaji park Tel. Exch.	ST 2.7	2

LIST OF ESSENTIAL FEEDERS (NORTH / WEST)**MAHIM RSS**

SR.	ESSENTIAL CONSUMER	NAME OF DSS	11 KV FEEDER	TR. NO.
1.	Prabhadevi Tel. Exch. (HV) & GMT Block (HV)	Prabhadevi Tel. Exch. (HV) and GMT Block	MM 2.1	2
2.	VSNL (HV)	VSNL (HV)	MM 1.5	1
3.	Mahim RSS	Mahim Static	MM 2.6	2
4.	Diagnostic Centre	Diagnostic Centre	MM 2.7	2

WORLI RSS

Sr.	ESSENTIAL CONSUMER	NAME OF DSS	11KV FDR NO.	TR. NO.
1	Worli RSS	Raheja Atlantis	W 1.4	1
2	MCGM Control	MCGM Data Centre	W 2.4	2
3	MCGM's T.P. Road Ppg. Stn.	New fergusson Air Compressor	W 3.3	3

PRABHADEVI RSS

Sr.	ESSENTIAL CONSUMER	NAME OF DSS	11KV FDR NO.	TR. NO.
1	Prabhadevi Tel. Exchange	Prabhadevi Tel. Exchange	PR 1.1	1
2	Prabhadevi RSS	A.B. Road (N)	PR 3.3	3
3	Doordarshan	Doordarshan	PR 3.5	3

NESTLE RSS

Sr.	ESSENTIAL CONSUMER	NAME OF DSS	11KV FDR NO.	TR. NO.
1	Nestle RSS	Nestle	NS 1.1	1
2	Peninsula Park	Peninsula Park	NS 2.2	2

STANDARD MILL RSS

Sr.	ESSENTIAL CONSUMER	NAME OF DSS	11KV FDR NO.	TR. NO.
1	Cynergy IT Park	Cynergy IT Park	SM 1.1,1.2	1
2	Standard Mill RSS	Standard Mill Static	SM 1.6	1

POCHKHANWALA RSS

Sr.	ESSENTIAL CONSUMER	NAME OF DSS	11KV FDR NO.	TR. NO.
1	Traffic Police Qtr.	Traffic Police Qtr.	PK 1.5	1
2	Naval Coast Guard	Coast Guard Creek	PK 1.6	1

V.S.N.L RSS

Sr.	ESSENTIAL CONSUMER	NAME OF DSS	11KV FDR NO.	TR. NO.
1	VSNL	VSNL Static	V 1.2	1

ELPHINSTON MILL RSS

Sr.	ESSENTIAL CONSUMER	NAME OF DSS	11KV FDR NO.	TR. NO.
1	Jupiter Mill	Jupiter Mill	EL 1.6	1
2	India Bulls	Elphinston Mill RSS	EL 1.3 & 1.7	1
3	ESIC Hospital	ESIC Hospital	EL 1.5	1

P.M.G.P.RSS

SR.	ESSENTIAL CONSUMER	NAME OF DSS	11 KV FEEDER	TR. NO.
1.	Dharavi Depot	Dharavi Depot	PM 3.1	3
2.	ONGC Complex (HV)	ONGC	PM 1.2	1
3.	Dharavi Purif. (HV)	Dharavi Purif. (HV)	PM 2.1	2

WORLI DAIRY RSS

Sr.	ESSENTIAL CONSUMER	NAME OF DSS	11KV FDR NO.	TR. NO.
1	Doordarshan Kendra	Doordarshan	WRD 1.1	1
2	Worli Tel. Exchange	Worli Tel. Exchange	WRD 1.2	1
3	Worli Dairy RSS	Rishikesh	WRD 2.2	2

LOVE GROVE RSS

Sr.	ESSENTIAL CONSUMER	NAME OF DSS	11KV FDR NO.	TR. NO.
1	MCGM's L.G. Ppg. Stn.	Love Grove RSS	LG 1.8/2.7/4.2	1,2,4
2	Love Grove RSS	Discovery Of India	LG3.5	3
3	Atria Mall	Sainath co-op	LG 3.6	3
4	Nehru Science Centre	Science Centre	LG 3.3	3

LIST OF ESSENTIAL FEEDERS (CENTRAL NORTH ZONE)**KUSSARA RSS**

Sr.	ESSENTIAL CONSUMER	NAME OF DSS	11KV FDR NO.	TR. NO.
1	Kussara RSS	Kussara STATIC	K 2.3.	2

KEM HOSPITAL RSS

Sr.	ESSENTIAL CONSUMER	NAME OF DSS	11KV FDR NO.	TR. NO.
1	Wadia Hospital	Wadia Hospital	KEM 1.1/2.2	1
2	Tata Hospital,	New Tata Memorial	KEM 1.1	1
3	Halfkin Institute	New Halfkin	KEM 1.4	1
4	Tata Hospital	Jubli Block	KEM 2.1	2
5	KEM Hospital & KEM RSS	Kem No.2	KEM 2.5	2

SEWREE RSS

Sr.	ESSENTIAL CONSUMER	NAME OF DSS	11KV FDR NO.	TR. NO.
1	Sewree RSS	King Edward	SW 1.4	1
2	Kem Hospital	Kem X Ray, Cardiac	SW 1.6	1
3	T.B. Hospital	Hospital	SW 2.3	2
4	Tata Cancer Hospital	Tata Memorial Annexe	SW 3.3	3

SWAN MILL RSS

Sr.	ESSENTIAL CONSUMER	NAME OF DSS	11KV FDR NO.	TR. NO.
1	Omnitalk wireless repeator Tower	TATA Housing	SN 1.1	1
2	Swan Mill RSS	Swan Mill Static	SN 1.6	1

MORARJI MILL RSS

Sr.	ESSENTIAL CONSUMER	NAME OF DSS	11KV FDR NO.	TR. NO.
1	Morarji RSS	Morarji Mill RSS Supply	Morarji Mill RSS LVB	1

MAZGAON DOCK RSS

Sr.	ESSENTIAL CONSUMER	NAME OF DSS	11KV FDR NO.	TR. NO.
1	Prince Ali Khan Hosp.	Ismalia Hosp.	MZ 1.3	1
2	Mazgaon Tel. Exchange	Mazgaon Tel. Exchange	MZ 1.4.	1
3	Mazgaon Dock	South Yard	MZ 1.5.	1
4	Bhandarwada Pumping	Bhandarwada Pumping	MZ 2.1.	2
5	Mazgaon Dock RSS	Mazgaon Dock Qtrs.	MZ 2.2	2
6	Naval store depot	Ordinance depot	MZ 2.6	2

BOMBAY CENTRAL RSS

Sr.	ESSENTIAL CONSUMER	NAME OF DSS	11KV FDR NO.	TR. NO.
1	MCGM'S Wyle Rd. Ppg Stn. & Civil Defence	Jacob Circle	BCT 1.2	1
2	Bombay Central RSS	Potia Estate	BCT 2.2	2
3	S.T. Depot	State Transport	BCT 3.1	3

BYCULLA RSS

Sr.	ESSENTIAL CONSUMER	NAME OF DSS	11KV FDR NO.	TR. NO.
1	Byculla Fire Brigade	Souter Street	BY 1.5	1
2	Byculla RSS	Cannaught West	BY 2.2	2
3	Boundary Rd. Ppg. Stn.	Boundary Rd.	BY 2.3	2
4	Masina Hospital	Masina Hospital	BY 3.6	3

PAREL RSS

Sr.	ESSENTIAL CONSUMER	NAME OF DSS	11KV FDR NO.	TR. NO.
1	MTNL Curry Rd.	MTNL Curry Rd.	P 1.4	1
2	Chinchpokli Ppg Stn.	Chinchpokli Ppg	P 1.5	1
3	M.G. Hospital & Parel Tank Pumping Station	M.G. Hospital	P 2.1	2
4	Parel RSS	Wadia Co-Op.	P 3.3	3
5	KEM Hospital & KEM RSS	KEM No.2	P 3.5	3

NAIR HOSPITAL RSS

Sr.	ESSENTIAL CONSUMER	NAME OF DSS	11KV FDR NO.	TR. NO.
1	Nair OPD	Nair OPD	NH 1.1	1
2	Nair Hospital RSS	Nair Hospital Static	NH 1.2	1
3	Nair Hospital	Nair Hospital	NH 1.4	1
4	Jagjivanram Hospital	Jagjivanram	NH 1.7	1
5	Byculla Tel. Exchange	Byculla Tel. Exchange	NH 2.1	2

MAHALAXMI RSS

Sr.	ESSENTIAL CONSUMER	NAME OF DSS	11KV FDR NO.	TR. NO.
1	Kasturba Hospital	Sane Guruji Marg	ML 1.5.	1
2	Jacob Circle Ppg Stn, Mahalaxmi RSS	New Circle	ML 2.1.	2
3	Dr. B. A. 110 KV RSS	SBM Static	ML 1.1	1

LALBAUG RSS

Sr.	ESSENTIAL CONSUMER	NAME OF DSS	11KV FDR NO.	TR. NO.
1	Lalbaug RSS	Lalbaug Static	1.3	1

SIMPLEX MILL RSS

Sr.	ESSENTIAL CONSUMER	NAME OF DSS	11KV FDR NO.	TR. NO.
1	Simplex Mill RSS	Planet Godrej	SMX 2.2	2

APOLLO MILL RSS

Sr.	ESSENTIAL CONSUMER	NAME OF DSS	11KV FDR NO.	TR. NO.
1	Apollo Mill RSS	Lodha Premerio Annx	AM 1.2	1

LIST OF ESSENTIAL FEEDERS IN CENTRAL SOUTH ZONE

MALBAR HILL RSS

Sr.	ESSENTIAL CONSUMER	NAME OF DSS	11 KV FEEDER	TR. NO.
1.	Varsha Bungalow (C M Resident)	Mount Pleasant (E)	MH 1.1	1
2.	Sahyadri Guest House	Sahyadri Guest House	MH 1.1	1
3.	Malbar Hill R.S.S.	New Siri Road	MH 2.7	2
4.	Malbar Hill Booster Pumping	Malbar Hill Booster	MH 3.5	3
5.	Antilia	Antilia	MH 3.5	3

NEPEANSEA RSS

Sr.	ESSENTIAL CONSUMER	NAME OF DSS	11 KV FEEDER	TR. NO.
1.	Governor of Maharashtra	Raj Bhavan	NS 2.1	2
2.	Raj Bhavan Premises	Walkeshwar (S)	NS 1.1	1
3.	Malbar Hill Reservoir	Malbar Hill Reservoir	NS 2.4	2
4.	Malbar Hill Pump	Malbar Hill Pumping	NS 2.4	2
5.	Nepeansea Rd. RSS	Godrej Baug	NS 1.4	1
6.	Varsha Bungalow (C M Resident)	Mount Pleasant & Everest Apartment	NS 3.2	2

GRANT ROAD RSS

Sr.	ESSENTIAL CONSUMER	NAME OF DSS	11 KV FEEDER	TR. NO.
1.	Grant Road R.S.S.	Grant Road Static	GR 3.1	3
2.	Khetwadi R.S.S.	Grant Road Static	GR 3.1	3
3.	Harkisondas Hospital	Harkisondas Hospital	GR 1.6	1
4.	Saifee Hospital	Saifee Hospital	GR 1.1	1
5.	J. J. Hospital	Baboola	GR 4.6	4
6.	J. J. Hospital	J. J. Hospital	GR 4.6	4
7.	Durgadevi Reservoir	Durgadevi Reservoir	GR 2.4	2

CUMBALA HILL RSS

Sr.	ESSENTIAL CONSUMER	NAME OF DSS	11 KV FEEDER	TR. NO.
1.	Breach Candy	New Breach Candy	CH 1.5	1
2.	Breach Candy	New Breach Candy	CH 3.6	3
3.	Jaslok	Jaslok	CH 3.3	3
4.	Cumbala Hill R.S.S.	Olympus	CH 1.3	1
5.	Antilia	Antilia	CH 3.2	3

ESPLANADE RSS

Sr.	ESSENTIAL CONSUMER	NAME OF DSS	11 KV FEEDER	TR. NO.
1.	System Control R.S.S.	Vidyut	E 2.1	2
2.	Esplanade R.S.S.	Vidyut	E 2.1	2

GIRGAON RSS

Sr.	ESSENTIAL CONSUMER	NAME OF DSS	11 KV FEEDER	TR.NO.
1.	Girgaon R.S.S.	Girgaon (W)	GM 2.7	2

MUMBADEVI RSS

Sr.	ESSENTIAL CONSUMER	NAME OF DSS	11 KV FEEDER	TR. NO.
1.	Mumbadevi R.S.S.	Mumbadevi Tank	MU 3.3	3
2.	Kalbadevi Telephone Exchange	Kalbadevi Telephone Exchange	MU 3.3	3

MASJID RSS

Sr.	ESSENTIAL CONSUMER	NAME OF DSS	11 KV FEEDER	TR. NO.
1.	Masjid R.S.S.	Khadak Street	MS 1.2	1
2.	Shayda Marg MCGM Pumping	Shayda Marg	MS 2.6	2

J. J. HOSPITAL RSS

Sr.	ESSENTIAL CONSUMER	NAME OF DSS	11 KV FEEDER	TR. NO.
1.	J. J. Hospital	J. J. Hospital North	JJ 1.4	1

NIMKAR MARG RSS

Sr.	ESSENTIAL CONSUMER	NAME OF DSS	11 KV FEEDER	TR. NO.
1.	Harkisandas Hospital	H N Hospital	NM 1.5	1
2.	Harkisandas Hospital	H N Hospital	NM 2.5	2
3.	Nimkar Marg RSS	Tardeo Depot	NM 1.1	1

MAZGAON SHIP YARD RSS

Sr.	ESSENTIAL CONSUMER	NAME OF DSS	11 KV FEEDER	TR. NO.
1.	Mazgaon Shipyard RSS	BSN	MSY 1.5	1

LIST OF ESSENTIAL FEEDERS IN SOUTH ZONE**APOLLO RSS**

Sr.	ESSENTIAL CONSUMER	NAME OF DSS	11 KV FEEDER	TR. NO.
1	Electric House	Electric House	A-1.4	1
2	Police Head Quarters	Chhatrapati Shivaji Marg	A-2.4	2
3	Indian Navy	INS Angre	A-2.5	2
4	Apollo RSS	Apollo Static	A-4.3	4
5	Taj Hotel	Taj	A-1.2, A 2.4	1 & 2
6	Janmabhoomi Press	Janmabhoomi	A-2.7	2
7	Mumbai Stock Exchange	New Stock Exchange	A-1.5, 2.1. 3.1	1, 2, 3

G.T. HOSPITAL RSS

Sr.	ESSENTIAL CONSUMER	NAME OF DSS	11 KV FEEDER	TR. NO.
1	Times of India	Times/Times of India	GT-1.2	1
2	Police Commissioner's Office	Commissioner Office	GT-2.4, GT 1.7	1 & 2
3	BMC Pumping & Disaster Management MCGM	Corporation	GT-1.2	1
4	Bombay Hospital	B'bay Hospital Annex.	GT-2.3	2
5	G.T. Hospital / Cama Hospital	G.T. Hospital	GT-2.1	2
6	B'bay Hospital Medical Research Centre	Medical Research Centre	GT-2.5 GT 1.6	1,2

NARIMAN POINT RSS

Sr.	ESSENTIAL CONSUMER	NAME OF DSS	11 KV FEEDER	TR. NO.
1	Free Press	Free Press	NP-2.1	2
2	Sachivalaya	Sachivalaya Annex.	NP-2.2	2
3	Indian Express	Indian Express	NP 2.3 / 3.3	1, 2
4	Vidhan Bhavan	New Council Hall	NP-2.7	2
5	Vidhan Bhavan Stand By Supply	Union Bank	NP-4.1	2
6	Mantralaya	Mantralaya New	NP-3.6/NP-2.2	1/2
7	Aakashwani	A.I.R. Studio	NP-3.3	1
8	MERC	Commerce Centre	NP-4.3	2
9	Oberoi Hotel	Oberoi Sheraton/Oberoi Ann.	NP-4.7,NP-1.8,NP-3.5	2/1 /1
10	PIEM Hotel	PIEM Hotel	NP-1.7	1

COLABA RSS

Sr.	ESSENTIAL CONSUMER	NAME OF DSS	11 KV FEEDER	TR. NO.
1	Indian Navy	INS Kunjali	C-1.6	1
2	Piem Hotel	Piem Hotel	C 2.5	2
3	BEST Computer Centre/Geeta Nagar Pumping	Backbay Depot/ Geeta Ngr.Ppg.	C-3.4	3

HUTATMA CHOWK RSS

Sr.	ESSENTIAL CONSUMER	NAME OF DSS	11 KV FEEDER	TR. NO.
1	Telegraphic Office	C.T.O.	HC-1.2, 3.3	1&3
2	ENT Hospital	ENT Hospital	HC 1.4	1
3	City Tel. Exch.	Telephone	HC-2.3	2
4	VSNL	OCS	HC 3.2	3
5	High Court	High Court	HC-1.3, 3.3	1&3

BALLARD RSS

Sr.	ESSENTIAL CONSUMER	NAME OF DSS	11 KV FEEDER	TR. NO.
1	Indian Navy	Ballard Docks	BE-1.4, 2.2 & 3.2	1, 2, 3
2	Mint	Mint	BE-2.1 / 1.2	1, 2
3	St. George Hosp. + G.P.O	St. George	BE-3.4	3
4	New Reserve Bank	New RBI, New Mint	BE 3.6, 1.1	3, 1
5	BEST VHF Supply / RBI	New Mint	BE-1.1	1

MARINE DRIVE RSS

Sr.	ESSENTIAL CONSUMER	NAME OF DSS	11 KV FEEDER	TR. NO.
1	BMC Churchgate Pumping	Churchgate Sew-Ppg.	MD-1.7	1
2	Telecom	Telecom	MD-2.4	2
3	Air-India	Air-India	MD-3.1	3
4	M.D. RSS	CCI	MD-3.2	3
5	Vidhan Bhavan	New Council Hall	MD-1.1	1/2

NAVAL DOCKYARD RSS

Sr.	ESSENTIAL CONSUMER	NAME OF DSS	11 KV FEEDER	TR. NO.
1	Naval Dock Yard RSS	All Feeders to Naval Dock	All Fdr.	All

NAVY NAGAR RSS

Sr.	ESSENTIAL CONSUMER	NAME OF DSS	11 KV FEEDER	TR. NO.
1	Colaba sewage	Colaba sewage	NN 1.1	1
2	Army & Navy	MES No.1	NN 1.2	1
3	TIFR	TIFR & TIFR Old	NN 1.4, 2.5	1, 2
4	Colaba Purification+ Colaba Observatory + Robert Road Pumping, Ashwini Hosp.	Colab Puri.,Col.Obs.,R.R.Ppg., AshwIni Hosp.	NN 1.7	1
5	BEST Computer Centre/Geeta Nagar Pumping	Backbay Depot/ Geeta Ngr.Ppg.	NN-1.5	1

BACKBAY RSS

Sr.	ESSENTIAL CONSUMER	NAME OF DSS	11 KV FEEDER	TR. NO.
1	Cooperage Exchange	Coopeage Exchange	BB 1.2,	1
2	Colaba Air Compressor	Colaba Air Compressor	BB 1.7	1
3	Colaba Tel. Exchange	Strand Cinema	BB 2.2	1
4	BMC Pumping	Cooperage Pumping	BB 2.3	1
5	Cuffe Parade Tel. Exchange	Somani School East	BB 2.5	1
6	State Control	Cooperage Rd.	BB 2.6	1
7	MERC	Commerce Centre	BB 2.5	1
8	Sachivalaya Annexe	Sachivalaya Annexe	BB 1.5	2
9	Mantralaya	Mantralaya New	BB 1.5	1

ANNEX. VI

**BOOKING OF A GRADE OFFICERS AT VARIOUS RECEIVING
STATIONS DURING EMERGENCIES / DISASTER OF LARGE MAGNITUDE**

ZONE	SR. NO.	NAME OF RSS	PROPOSED BOOKING			
			20.00 HRS. TO 08.00 HRS		08.00 HRS TO 20.00 HRS	
			NAME	CH. NO.	NAME	CH.NO
SOUTH	1	Apollo	V.U.Kurade	215174	P.W. Sawant	212797
	2	Backbay 110 KV	Y.N. Khadke	215152	V.K. Ade	213319
	3	Ballard Estate	P.N. Chaudhary	215384	P.R. Kharat	212460
	4	Colaba	A.R.Tiwari	215162	P.R.Sonawane	215483
	5	G.T. Hospital	G.S. Katkar	212927	R.J. Petiwale	211294
	6	Hutatma Chowk	N.N. Thale	215535	S.A. Kulkarni	213336
	7	Marine Drive	G.R. Bains	215166	S.L.Tambe	211302
	8	Nariman Point	D.R. Ingle	213310	S.S. Kamble	215374
	9	Naval Dock	---		---	
	10	Navy Nagar	S.S. Mairh	215551	M.M. Shaikh	215557
CENTRAL SOUTH	11	Cumballa Hill	A.S. Ali	211292	B.S.Kamble	214476
	12	Esplanade	S.M.Sonawane	215303	R.J. Deshmukh	215553
	13	Girgaum	S.D. Lokhande	213283	S.D.Chougule	215164
	14	Grant Rd	K.A.Dadmal	216788	S.D. Suryavanshi	213278
	15	J.J. Hospital	M.K.Anwar	215582	J.L. Pawar	215468
	16	Khetwadi	N.A. Bhosale	217606	R.A.A.Sayani	211757
	17	Malbar Hill	D.S.Deshmukh	213837	S.N.Jagtap	215614
	18	Masjid	S.D.Patil	214919	S.P. Kumbhar	215414
	19	Mumbadevi	V.M. Avghad	213885	N.N. Sonawane	215388
	20	Nimkar Marg	L.S.Patil	215630	P.S. Narkhede	215213
	21	Mazgaon Ship Yard	----		----	

PROPOSED BOOKING						
ZONE	SR.NO.	NAME OF RSS	20.00 HRS. TO 08.00 HRS		08.00 HRS TO 20.00 HRS	
			NAME	CH. NO.	NAME	CH.NO
CENTRAL NORTH	22	B. Ambedkar 110 KV	S.A. Jadhav	215194	V.S. Gujar	215799
	23	Byculla	D.R. Chormale	214489	S.G. Surti	321525
	24	Kussara	N.S. Kunde	216142	S.M.Taur	215583
	25	Lalbaug	M.H. Waghmare	214480	P.B. Gadankush	214471
	26	Love Grove	S.S. Kulkarni	215301	B.S. Gosavi	216343
	27	Mahalaxmi	M.Y. Sethwala	211797	M.A.Kharote	212769
	28	Mazgaon Dock	----		----	
	29	Mumbai Central	S.G.Kamdar	214473	J.M. Lande	215726
	30	Nair Hospital	D.C.Shah	211912	U.J.Karekar	212785
	31	Parel	S.V.Shaha	215422	T.N.Shekokar	214481
	32	Tardeo	G.S.Dadiyal	214689	S.S. Adlinge	214320
	33	Worli Dairy	S.D. Joglekar	215591	D.J.Talokar	211839
	34	Futurex	----		----	
	35	Jalan Mill (temp HT Room)				
	36	Apollo Mill	----		----	
	37	Simplex Mill	----		----	----
	38	Avighana	N.J. Vhotkar	213953	S.S. Gawde	212903
	NORTH WEST & NORTH EAST	39	Dharavi	---		-----
40		Mahim	M.M. Daware	215777	N.M.Wayal	215741
41		Mahim Causeway	S.Y. Jagtap	213214	B.S.Wahut	216791
42		Nestle	P.K. Prabhu	215386	D.G. Patil	215171
43		PMGP	C.S. Gugnani	215352	M.N.Nangare	213915
44		Prabhadevi	A.M. Rodrigues	213247	R.B.Ghate	212367
45		Elphinston Mill	M.P. Rannaware	211954	P.V.Gholap	215172
46		Sitladevi	P.P. Sonawane	212944	S.P. Sontakke	214688
47		Standard Mill	R.U. Kasar	212777	R.N. Prabhu	215611
48		Worli	S.N.Pawar	214129	R.R. Bandal	215609
49		VSNL	----		----	
50		Peninsula Land	----		----	
51		Pochkanwala Road	A.B. Shinde	215471	S.V.Patil	215207
52		Kings way	R.B. Zope	215410	K.R.Daberoa	216773
53		KEM Hospital	S.N. Inchnalkar	212767	S.P.Kulkarni	215167
54		Raoli Hill	G.D. Pise	211765	D.R. Jamghare	216331
55		Sewree	S.M.Deshmukh	212958	A.S.Adangale	213237
56		Sion Fort	S.G. Purandare	214514	V.S.Khole	212513
57		Swan Mill	R.K.Kamble	215721	J.D.Dhodi	217107
58		Wadala	B.R. Bhole	215723	C.S. Bramhane	212783
59		Lodha Crown	V.S.Chavan	216363	A. V. Sawant	214482
60		Pratiksha Nagar	P.P. Kulkarni	213231	U. N. Desai	213235

Note : If the booked Officer is on leave or deputation or any changes in shift / RSS , the concerned Divisional Engineer (Maintenance) should take care to book substitute Officer in his place. The above booking will also be applicable in case of Mumbai / Maharashtra / Bharat Bandh subject to instructions from C.E. (Maintenance). In such cases, the concerned Officer shall contact respective System Supervisory Controls to confirm their names.

ANNEXURE VII

Electric Supply - Address & Telephone Numbers of Senior Officers

Sr	Name	Desi	Office		Resi		Functional Responsibility
			Location	Tele.No	Location	Tele.No	
1	Dr. Surendrakumar Bagde	GM	Colaba	22799313 22856262 22873961	--	9820285569	Entire over all in-charge of Electric Supply & Transport
2	Vacant	DGM(ES)	Colaba	22830284 22831952 22856262 Extn.510	--	--	Entire in-charge of Electric Supply Branch
3	Urunkar M.B.	AGM(ES)	Colaba	22831950 22830284	C-7 BEST Off.Qtrs. Altamount Rd. Cumbala Hill Mumbai 400026	23511661 9869258727	Overall in-charge of Electric Supply Branch
4	Patsute R.D.	CECC	Colaba	22799563	Flat no-112 BEST Multistoryed bldg. 11 th floor, Colaba Mumbai 400001	9869405910	Overall in-charge of Customer Care dept. Meters, IT & CGRF dept.
5	Makwana S.P.	CEPL	Colaba	22799583	906, Neelkant enclaves, LBS marg Opp. Shreyas cinema Gnatkoper (W) Mumbai 400086	25001157 9869205357	Overall in-charge of Project, Planning Network, Procurement of equipments, Street lighting, SCADA system
6	Chougule N.N.	CER	Colaba	22040081 22799567	Bldg. E2, flat no 11, Gitanjali CHS, Sector 46 Nerul (W) Navi Mumbai 400706	27718375 9969324485	Overall in-charge of Regulatory Cell
7	Patil R.U.	CEM	Colaba	22840942 22883280	Flat no 6, BEST Off. Qtrs. Lovegrove, PMG Complex, Dr.B.A.Rd. Worli Mumbai 400018	9869254174	Overall in-charge of Operation & Maint. Dept. all executing dept. i.e. Erection North South & Construction

8	Dhisle S.G. (Due for superannuation w.e.f.01.06.2021)	DCE (W)	Kussara	23782388	C-2804,ZIVA Atmosphere Goregaon Mulund Link Rd, Mulund (W) Mumbai 400080	7045005533	Overall in-charge of Works dept. i.e. executing depts.. Erection North, South & Construction
9	Vacant	DCE (DS)	Phatakwadi	22013635	--	--	Overall in-charge of Operation & Maint. (South & Central South dept.)
10	Kulkarni P.P.	DCE (DN)	Wadala	24102929	Flat no 5, BEST off. Qtrs. Kingsway Qtrs. Dadar (E) Mumbai 400014	9869451826	Overall in-charge of all operation & Maint. of North dept.
11	Bhandari N.V.	DCECC (S)	Colaba	22841675	B-101 Akash Rajhans resi. Comp.BHBG nagar, Dewanman Vasai (W) 401202	9769081149	Overall in-charge of Customer Care A B C D Ward & Meters dept.
12	Smt.Rege S.A. (Due for superannuation w.e.f.01.06.2021)	DCECC (N)	Wadala	24101532	703, Lotus Dosti Acres, Antop Hill, Wadala Mumbai 400037	24106050 9869925160	Overall In-charge of FS, FN , SIMHA , HVC, E, GS & GN Ward
13	Chandankar G.G.	DCE(SL)	Sewree	24116023	B/15, BEST Off. Qtrs. Altamount Rd, Cumbala Hill, Mumbai 400026	24116023 9757435560	Overall in-charge of Street Lighting Maint. & Const. , Tele Communication & Electronics dept.
14	Bhinge S.N.	DCEP /DCER	Colaba	22811257 22853483	B-3/302 Shree Rajlaxmi Park Kharegaon, Kalwa Thane 400605	25397140 9869745911	Overall incharge of Power Management & procurement of renewable energy of Regulatory Cell
15	Vacant	DCE (Review)	Colaba	22828891 22799732	--	--	In-charge of Review Committee

16	Mukane S.B.	DECO	Sewree	24165188 24162879	BEST Off. Qtrs. 12/B Flat No 8, MHADA Colony Andheri (E) Mumbai 400093	9821489183	In-charge of Construction dept.
17	Vagal H.V.	DEEN	Kussara	23719755	2 nd Floor BEST off. Qtrs. Grant Rd RSS Khetwadi 10 th lane Girgaon Mumbai 400004	23861096 9869457133	In-charge of Erection North dept.
18	Gandhi R.G.	DEES	Kussara	23719763	Flat no 1, 3 rd floor BEST Off. Qtrs. Siri Rd, Malabar Hill , Mumbai 400006	23613056 9867402046	In-charge of Erection South dept.
19	Gunjal P.D.	DEMNE	Anik	24016611 24012951	7, 3 rd Floor BEST Off. Qtrs. 125, M.B..Raut Rd, Shivaji Park Mumbai 400028	9869137380	In-charge of Operation & Maint. North East dept.
20	Jagaldas N.P.	DEMNW	Prabhadevi	24120301	Flat no 12 3 rd Floor, BEST Off. Qtrs. Lovegrove PMG Complex Dr. B.A.Rd, Worli Mumbai 400018	9820654161	In-charge of Operation & Maint. North West dept.
21	Chavan S.R.	DEMCN	Wadala	24108285	15, BEST Lovegrove Off.Qtrs, Dr.Annie Besant Rd. Worli Mumbai 400018	9819908070	In-charge of Operation & Maint. Central North dept.
22	Herlekar N.M.	DEMS	Colaba off shore	22154428	Flat no 3, 3 rd Floor Malabar Hill RSS Off. Qtrs. Malabar Hill Mumbai 400026	9869410254	In-charge of Operation & Maint. South dept.
23	Naik A.V.	DEMCS	Phatakwadi	22073875	BEST Off. Qtrs. Suparibaug, Parel Mumbai	9869427564	In-charge of Operation & Maint. Central South dept
24	Bansode S.S.	DECC A Ward	Colaba	22883868	25/C/702 New Dindoshi Greenfield CHS MHADA Goregaon (E) Mumbai 400065	28400090 9869407196	In-charge of Customer Care A Ward

25	Bamble M.B.	DECC B Ward	Colaba	22799541	B/15 Happy Home Society, Jaideep Nagar Nahur (E) Mumbai 400042	9769984929	In-charge of Customer Care B Ward
					Email id : deccbward@bestundertaking.com		
26	Kolekar S.R.	DECC C Ward	Phatakwadi	22011814 22080524	Flat No 4 3 rd Floor BEST Off. Qtrs. Sion Rd. No 1 Mumbai 400022	24037634 9869224518	In-charge of Customer Care C Ward
					Email id : decccward@bestundertaking.com		
27	Neglur S.S.	DECC D Ward	Tardeo	23021814 22080524	Flat no 4, 3 rd floor, BEST Off.Qtrs. Sion Rd. no1 Mumbai 400022	24037634 9869224518	In-charge of Customer Care D Ward
					Email id : deccdward@bestundertaking.com		
28	Jawale P.B.	DECC E Ward	Mumbai Central	23002578	Flat no 1, 5 th Floor BEST Off. Qtrs. Backbay Veej Bhavan, Mumbai 400021	9619370091	In-charge of Customer Care E Ward
					Email id : deceeward@bestundertaking.com		
29	Chauhan D.J.	DECC F/N Ward	Wadala	24191324	Flat no 203 B.No. H-19 Anand CHS Pratishanagar Sion Mumbai 400022	9892073234 9029368989	In-charge of Customer Care F/N Ward
					Email id : deccfnward@bestundertaking.com		
30	Vacant	DECC F/S Ward	Wadala	24104282			In-charge of Customer Care F/S Ward
					Email id : deccfsward@bestundertaking.com		
31	Thorve J.S.	DECC G/N Ward	Dadar	24141389	B/1104, Shailesh CHS, Sec. 19A, Nerul, Navi Mumbai 400706	9869256419	In-charge of Customer Care G/N Ward
					Email id : deccgnward@bestundertaking.com		
32	Mali S.B.	DECC G/S Ward	Dadar	24120557 24183276	Flat no 6, 1 st Floor Kingsway BEST Off. Qtrs. Dadar Mumbai 400014	9029886899	In-charge of Customer Care G/S Ward
					Email id : deccgsward@bestundertaking.com		
33	Andhale B.D.	DECC SIMHA	Wadala	24157813 24126262	204,Plot no B/36 Sai Darshan Darave, Sec.23, Nerul Navi Mumbai	27712050 9869430256	In-charge of Customer Care SIMHA dept.
					Email id : deccsimhaward@bestundertaking.com		
34	Kulkarni S.A.	DE Meters	Wadala	24186353	D/2/21 Khira Nagar Santacruz (W) Mumbai 400054	9869005319	In-charge of Meters dept.
					Email id : demr@bestundertaking.com		

35	Shaikh B.A.W.	DEHVC	Tardeo	23026691 23002767	B/4 Morland Rd, Off.Qtrs. Near Mumbai Central Bus Depot, Mumbai 400008	9967915094	In-charge of High Value Consumer dept.
36	Pawar D.N.	DESL(M)	Kussara	23781839	C/703, M-2 CHS Pratiksha Nagar, Sion Mumbai 400022	24085171 9870383684	In-charge of Street Lighting dept
37	Pardeshi S.V.	DET & E	Tardeo	23090036 23026801	Flat No 2, 2 nd floor BEST Off. Qtrs. Sion Fort, Sion Rd no 1 Mumbai 400022	9869043987	In-charge of Tele communication & Electronics dept.
38	Talegaonkar A.R.	DEPRO	Veej Bhavan	22181420 22822080	3/14 BEST Off. Qtrs. Plot No 56 Gorai Borivali Mumbai 400091	9869220798	In-charge of Project dept.
39	Gaikwad S.Y.	DEMTS	Kussara	23719753	1/A, Ram Apts. Pandurangwadi Goregaon Mumbai 400065	9869245437	In-charge of Material Testing & Std. dept.
40	Samuel N.N.	DEPLM	Backbay	22811254	Shivlal Motilal Bldg. 2 nd Floor Jehangir Boman Behram Marg Mumbai Central 400008	9833088957	In-charge of planning (Materials) dept.
41	Rokde V.K.	DEPLN	Bankbay	22880950	Veej Bhavan Off. Qtrs. Flat no 2 5 th floor Nariman Point Mumbai 400021	22048170	In-charge of planning (Network) North & South dept
42	Kamat V.M.	DEPM	Colaba	22828365 22799555	215/5788, Darshan HIG Complex Pant Nagar Ghatkoper (E) Mumbai 400075	25015195 9819230820	In-charge of Power Procurement dept.
43	Patil R.B.	DEPP/ DECGRF	Colaba	22841043	BEST Kingsway Off. Qtrs. Flat No 2 Parshi Colony Dadar TT , Dadar (E) Mumbai 400014	9833354391	In-charge of Renewable Power procurement & Consumer Grievances redressal Forum dept.

44	Deshmukh G.D.	DE Vig. (North)	Wadala	24172725	Flat No 132,13 th floor Multistoried Bldg. Electric House Colaba Mumbai 400014	22819025 9819732911	In-charge of Vigilance (North) dept
					Email id : devignorth@bestundertaking.com		
45	Fulpagare S.V.	DE Vig. (South)	Colaba	22799701	BEST Off. Qtrs. Potia Land Mumbai Central	9869870154	In-charge of Vigilance (South) dept
					Email id : devignsouth@bestundertaking.com		
46	Bansode P.K.	DETIE/ HR & S	Mumbai Central	23077670 23097698	4B/103 Devratna Nagar Swadeshi Mill Compound Chunaabhatti Mumbai 400022	24054421 9029011451	In-charge of TIE & HR & S dept.
				Email id : detie@bestundertaking.com & dcesafetycell@bestundertaking.com			

ANNEXURE VIII

ADDRESS OF RECEIVING SUB-STATIONS			
SR. NO.	NAME OF EXIST. RSS	ADDRESS	TEL. NO.
1	APOLLO	B.E.S. & T. Undertaking, Apollo RSS Near Lion Gate, Shahid Bhagat Singh Rd. Mumbai 400 001.	22843650, 9029011732
2	BYCULLA	B.E.S. & T. Undertaking, Byculla RSS Opp. Mafatlal Mill Gate No.2, Junction of E.S.Patanwalla Marg, Mumbai 400 027.	23723339, 9029011638
3	BALLARD ESTATE	B.E.S. & T. Undertaking, Ballard Estate RSS Opp. New Custom Office, Shoorji Vallabhdas Rd. Mumbai 400 038.	22661696, 9029011731
4	COLABA	B.E.S. & T. Undertaking, Colaba RSS, Colaba Bus Stn. Opp. Graduate Womens Hostel, Mumbai 400 005.	22150070, 9029011739
5	DHARAVI	B.E.S. & T. Undertaking, Dharavi RSS Matunga Labour Camp, Near MSEB Office, Mumbai 400 019.	24072793 9029011575
6	ESPLANADE	B.E.S. & T. Undertaking, Esplanade RSS Opp. BEST Vidyut Bldg Pathakwadi Lane, Off. Lokmanya Tilak Rd. Mumbai 400 002.	22087767, 7304456106
7	GRANT ROAD	B.E.S. & T. Undertaking, Grant Road RSS Khetwadi 10th Lane, Nr Alfred Cinema Mumbai 400 004	23824892, 7304456112
8	KUSSARA	B.E.S. & T. Undertaking, Kussara RSS, Near Bijlee Bhavan, Opp. Mazgaon Dock, Kussara Bunder Rd, Mumbai-10	23726398, 7304456109
9	KINGSWAY	B.E.S. & T. Undertaking, Kingsway RSS BEST Workshop Gate No.2, Tilak Rd., Dadar T.Mumbai 400 014	24126637, 9029011595
10	GIRGAUM	B.E.S. & T. Undertaking, Girgaum RSS Zaobawadi, Ram Mandir Jagannath Shanker Sheth Rd. Girgaum, Mumbai 400 004.	22016475, 9029011682
11	MAHALAXMI	B.E.S. & T. Undertaking , Mahalaxmi RSS Near Sant Gadge Maharaj Chowk, (Saat Rasta),Sane Guruji Marg, Mumbai 400 011	23087229, 9029011625
12	MAHIM	B.E.S. & T. Undertaking, Mahim RSS Near Amar Hind Mahal,Gokhale Road (N), Dadar(W), Mumbai 400 028.	24223484 9029011596
13	MALBAR HILL	B.E.S. & T. Undertaking, Malabar Hill RSS Near Uphar Bldg. New Siri Road, Chiranjilal Loyalka Marg Mumbai 400 006.	23674865, 7304456113
14	LOVE GROVE	B.E.S. & T. Undertaking, Love Grove RSS Love Grove Pumping Stn., (MCGM) Dr. Annie Besant Rd. Worli, Mumbai	24934567, 9029011623

		400 025.	
15	PAREL	B.E.S. & T. Undertaking, Parel RSS BEST Officers Qtrs. Next to BMC School, Saibaba Rd. Mumabi 400 012.	24715839, 9029011610
16	BACKBAY 110KV	B.E.S. & T. Undertaking, Backbay 110kV RSS Backbay Veej Bhavan General Bhonsle Marg Mumbai 400 021.	22880948, 22843463 9029011578
17	WADALA	B.E.S. & T. Undertaking, Wadala RSS near BMC Salt Pan Pumping Stn., Opp. Block No.212, C.G.S. Colony, Sector II, Antop Hill, Wadala(E), Mumbai 400 037.	24013716, 9029011593
18	WORLI	B.E.S. & T. Undertaking, Worli RSS Opp. Goodlas Nerolac Paint, Ganpatrao Kadam Marg, Mumbai 400 018.	24923853 9029011621
19	MARINE DRIVE	B.E.S. & T. Undertaking, Marine Drive RSS Near Marine Drive Plaza Hotel, Behind Yashodhan Bldg. Dinshaw Wacha Rd., Mumbai 400 004.	22027617, 9029011714
20	PRABHADEVI	B.E.S. & T. Undertaking, Prabhadevi RSS Opp. Passport Office, J.B. Temkar Marg, Worli, Mumbai 400 025.	24228367, 9029011615
21	HUTATMA CHOWK	B.E.S. & T. Undertaking, Hutatma Chowk RSS Janmabhoomi Marg, Off. Dr. D.N. Rd Hutatma Chowk, Fort Mumbai 400 001.	22024673, 9029011716
22	NARIMAN POINT 110KV	B.E.S. & T. Undertaking, Nariman Point 110Kv RSS Sakhar Bhavan, Ramnath Goyanka Marg Behind Oberoi Hotel, Nariman Point Mumbai 400 021.	22045011, 22044636 9029011753
23	NAVAL DOCKYARD	B.E.S. & T. Undertaking, Naval Dockyard RSS Naval Dockyard - M.R.S.S.Premises of Indian Navy, Lion GateShahid Bhagat Singh, Colaba Mumbai 00 023.	22665597, 9029011737
24	BOMBAY CENTRAL	B.E.S. & T. Undertaking, Bombay Central RSS, Potia Estate, Mumbai Central Bus Depot Bellasis RdMumbai 400 008.	23098439, 9029011458
25	CUMBALLA HILL	B.E.S. & T. Undertaking, Cumballa Hill RSS , Opp. Neelamber Bldg. Altamount Rd., Cumballa Hill Mumbai 26.	23511317, 7304456112
26	SITLADEVI	B.E.S. & T. Undertaking, Sitladevi RSS Prakash Narayan Kotnis Marg, Off. Lady Jamshedji Rd., Mahim Mumbai 400 016.	24461089 9029011587
27	WORLI DAIRY	B.E.S. & T. Undertaking, Worli Dairy RSS Near Manav Mandir Bldg. Acharya Atre Marg, Worli, Mumbai 400 018.	24920054, 9029011617
28	KHETWADI 110 KV	B.E.S. & T. Undertaking, Khetwadi 110kV RSS Khetwadi 10th Lane, Alfred Cinema Mumbai 400 004.	23853698, 23853683 23859417, 7304456097
29	MAHIM CAUSEWAY	B.E.S. & T. Undertaking, Mahim Causway RSS 1504, Near BMC Sewage Pumping Stn., Mahim Reclamation, Mahim Causway Rd., Mumbai 400 016.	24461082 9029011580

30	RAOLI HILL	B.E.S. & T. Undertaking, Raoli Hill RSS Premises of Raoli Hill Pumping Station, Kokari Agar Rd., Antop Hill, Mumbai 400 037.	24036639, 9029011564
31	MASJID	B.E.S. & T. Undertaking, Masjid RSS Ibrahim Merchant Rd. Khadak Street, Mumbai 400 009.	23455259 7304456107
32	SION FORT	B.E.S. & T. Undertaking, Sion Fort RSS Opp. BMC School Sixteen Bungalow, Sion (E) Mumbai 400 022.	24076096, 9029011551
33	MUMBADEVI	B.E.S. & T. Undertaking, Mumbadevi RSS Off. Kalbadevi Rd. Inside Mumbadevi BMC Compound, Near Mumbadevi Temple, Mumbai 400 002.	22421071 7304456108
34	SEWREE	B.E.S. & T. Undertaking, Sewree RSS Prabodhankar Thakre Udyan Bus Stn. Acharya Donde Marg, Sewree, Mumbai 400 015.	24129336, 9029011597
35	G.T.HOSPITAL	B.E.S. & T. Undertaking, G.T. Hospital RSS, G.T. Hospital Compound, Badruddin Tayyabji Marg Opp. C.I.D. Office Mumbai 400 001.	22672350, 9029011715
36	NEPEAN SEA	B.E.S. & T. Undertaking, Nepean Sea RSS Opp. Simla House, Near Godrej Baug, Off. Nepean Sea Rd Mumbai 400 036.	23677302, 7304456113
37	DHARAVI PMGP	B.E.S. & T. Undertaking, Dharavi PMGP-501 RSS Plot No.501, Shatabdi Nagar Lane Behind Shivaji Vidyalaya Gate, Dharavi - Mumbai - 400 017.	24078807, 9029011565
38	NAIR HOSPITAL	B.E.S. & T. Undertaking, Nair Hosp. RSS Behind Nurses Qtrs. Nair Hospital Premises, Dr. Anandrao L. Nair Rd., Mumbai 400 008.	23011057, 9029011652
39	DR. BABASAHEB AMBEDKAR 110KV	B.E.S. & T. Undertaking, Dr. BABASAHEB Ambedkar 110 KV RSS Senapati Bapat Marg, near Ambika Mill Bus ST, Mumbai- 400 013	24955083, 24955084 9029011469
40	KEM HOSPITAL	B.E.S. & T. Undertaking, KEM Hosp. RSS KEM Hospital Complex, S.S. Rao Road, Mumbai 400 012.	24157076, 9029011598
41	NESTLE	B.E.S. & T. Undertaking, Nestle RSS Nestle Compound, Near Bombay Dying Mill, Pandurang Budkar Marg, Mumbai 400 013.	24334629, 9029011614
42	NAVY NAGAR	B.E.S. & T. Undertaking, Navy Nagar RSS Near Kendriya Vidyalaya, Navy Nagar Mumbai 400 001.	22189000, 9029011745

43	POCHKANWALA ROAD	B.E.S. & T. Undertaking, Pochkanwala Rd. RSS, Plot no.-78 & 78A Police Constabulary Staff Qrts., Pochkhanwala Rd, Worli Mumbai 400 018.	24974517 9029011418
44	J.J. HOSPITAL	B.E.S. & T. Undertaking, J.J. Hospital RSS, J.J. Hospital premises, Ramchandra Bhatt Marg, Byculla, Mumbai 400 009.	23726431, 7304456173
45	MAZAGAON DOCK	B.E.S. & T. Undertaking, Mazagaon Dock RSS Resident Area,Opp. Angre House, Gate No.1, Dockyard Rd., Mazgaon, Mumbai 400 010.	23781444, 9029011642
46	TARDEO	B.E.S. & T. Undertaking, Tardeo RSS Pandey Compound bus Stn., Naik Chowk Tardeo, Mumbai 400 009	23523773, 9029011549
47	LALBAUG	B.E.S. & T. Undertaking, Lalbaug RSS Dattatraya Mahadev, Khamkar Marg, Lalbaug, Mumbai 400 012.	24713722, 9029011543
48	STANDARD MILL	B.E.S. & T. Undertaking, Standard Mill RSS, Appasaheb Marathe Marg, Prabhadevi, Mumbai 400 025.	24365264 9029011546
49	V.S.N.L.	B.E.S.T. Undertaking VSNL RSS Plot No - 1195 CS No. 77 Opp. Kirti College , K Dhuru Marg Prabhadevi Mumbai 400028	24313646 9029011437
50	SWAN MILL (SEWREE)	B.E.S. & T. Undertaking, Ashok garden (formely Swan Mill) Tokersi Jivraj Marg, sewree, Mumbai 400 015.	24188120, 9029011452
51	NIMKAR MARG	B.E.S. & T. Undertaking, Nimkar Marg, 33kv RSS Near Navjeevan Co.Op.Hsg.Soc., R.S.Nimkar Marg, Tardeo Depot, Mumbai- 400 008.	23010339, 7304456158
52	SIMPLEX MILL	B.E.S. & T. Undertaking, Simplex Mill RSS Godrej planet keshavrao khadye Marg, Byculla, Mumbai-400 011	23020440
53	ELPHINSTONE MILL	B.E.S. & T. Undertaking, 33kv RSS,Elphistone RSS, India Bulls finance Corp., Senapati Bapat marg, Mumbai 400 013.	24338111 9029011424
54	MAZAGAON SHIPYARD NORTH	B.E.S. & T. Undertaking, Mazgaon Morlernisation Project, dockyard, Mazgaon mumbai 400 010.	HT Consumer
55	APOLLO MILL	B.E.S. & T. Undertaking, APOLLO MILL RSS, LODHA PRIMERO, N.M. JOSHI MARG, CHINCHPOKALI (E) MUMBAI-11.	22942445

56	MORARJEE MILL	B.E.S. & T. Undertaking, Morarjee Mill 33 kv DSS Ashoka Tower (centre point) Dr. B.A. Road, Parel Mumbai 400012.	HT Consumer
57	FUTUREX 33 KV RSS	B.E.S. & T. Undertaking, Futurex 33 kv RSS N.M.Joshi Marg, Lower Parel, 400013	HT Consumer
58	PENINSULA LAND	B.E.S. & T. Undertaking, Peninsula 33 kv RSS. Ganpatrao Kadam Marg, Lower Parel, Mumbai 400013.	HT Consumer
59	JALN MILL (TEMP. HT ROOM)	B.E.S. & T. Undertaking, Ganpatrao Kadam Marg, Lower Parel, Mumbai- 400013.	HT Consumer
60	NAMAN MID-TOWN 33 KV DSS	B.E.S. & T. Undertaking, Behind kamgar krida Bhavan, Senapati Bapat Marg, Mumbai 400028.	HT Consumer
61	AVIGHNA 33 KV DSS	B.E.S. & T. Undertaking, New Islam mill compound Mahadeo Palav marg, Mumbai 400012.	HT Consumer
62	Mazgaon Shipyard RSS	B.E.S.&T. Undertaking, In the premises of Mazgaon Dock Ltd., South Yard, City Survey No. 247, Kussara Bunder, Mazgaon Dock, Mumbai - 400 010	HT Consumer
63	Lodha Crown T-6	B.E.S.&T. Undertaking, Plot / CS no. 4 (Pt), In front of Mala Garden, Pratiksha Nagar, Sion Mumbai-400 022	HT Consumer
64	Pratiksha Nagar	B.E.S.&T. Undertaking, New Cuffe Parade, In premises of Lodha Crown Building Pvt. Ltd. Building C, Wadala Truck Terminal, Anik Wadala Road, Mumbai - 400 37	HT Consumer

Ward Wise Possible Flooding Spots

Sr. No.	Ward	Name of Road	Location
	A	Geeta Nagar	--
1		Opp. Church	Near E.P. GNP-7
2		Near E.P. No. GNP/9	--
3		Opp. Geeta Nagar Library	Near E.P. GNP/29
4		Near Geeta Nagar School	Near E.P. No. GNP/35
		Ambedkar Punarvasan	--
5		Shri Sonu Kamble	Galli No. 3
6		Shri Sangram Suryavanshi	Galli No. 4
7		Near Saibaba Temple	--
		Ganesh Murti Nagar	Near opp. MP501, 503 & 504
8	Shri Ratilal Sharma	Galli No. 3	
9	Near Nagori Barib Nawaz Milk Center	Galli No. 5	
10	B	Meisheri Road	Opp. Sandhurst Road Station (Nityanand Hotel)
11		Chinch Bunder B.I.T. Chawl	Chawl No. 5, 6, 7, 8
12		Mohammed Ali Road	Sydneham Compound
13	C	S.V.P. Road	Between Moli Talkies & Mirza Ghalib Market
14		C.P. Tank	Yagnik Chowk towards V.P. Road
15		Maulana Azad Road	Gol Temple to Yagnik Chowk
16		Eraskin Road	Yagnik Chowk to rear of Mirza Ghalib Market
17		Mitrasen Mahimtura Marg	Full Road
18		Sant Sena Marg	Full Road
19		Trimbak Parshuram Road	Full Road
20		Durgadevi Road	Joint of Trimbak Parshuram Road to Jn. of Mitrasen Mahimtura Marg
21	D	Petit Hall	Nepean Sea Road
22		Kashinath Compound	Nepean Sea Road
23		Oomer Park	Bhulabhai Desai Road
24		Breach Candy Hospital	Bhulabhai Desai Road
25		Nana Chowk	Nana Chowk Junction
26		Tardeo Circle	Tardeo Circle
27		Hotel Drum Beat	Tardeo Road
28		Grant Road Railway Station	Sleater Road
29		Band Stand, Chowpatty	Babulnath Road
30		Grant Road Railway Station (West)	Near Sonawala Bldg.
31		Alankar Cinema Junction	S.V.P. Road
32		Khetwadi Area, Khetwadi Back Road	R.R. Road
33		R.S. Nimkar Marg	--
34		Pande Girls High School	Patthe Bapurao Bridge Low Level
35		Crystal Hotel	Gilder Lane

Sr. No.	Ward	Name of Road	Location
36	E	J.J. Road	Opp. Police Station
37		Palace Cinema	--
38		T.B. Kadam Marg	Junction of B.A. Road
39		Dattaram Lad Marg	Junction of B.A. Road
40		Br. Nathpai Road	Albery Chowk
41		Sant Savata Low Level	--
42		Shravan Yashwante Chowk	Kalachowky
43		Shravan Yashwante Chowk	Kalachowky
44		Motisha Lane	Opp. Byculla Police Station
45		Hindustan Masjid	Byculla
46		Sankli Street	Jn. II & III Sankli Street
47		Nair Road	Agripada Police Station
48		Maratha Mandir Road	Bombay Central
49		Belasis Road	Alexandra Cinema
50		Chinchpokali Railway Station	--
51	F/S	Hindmata Cinema	Dr. B.A. Road
52		Jagannath Dhatankar Marg	--
53		Dattaram Khamkar Marg	--
54		Kalachowky near Sardar Hotel	Dr. B.A. Road
55		Zakeria Bunder	Cross Gully
56		Vitthal Chavan Marg	--
57		Dadasaheb Phalke Road	--
58		R.A. Kidwai Road	Junction Road No. 26
59		Sewree Cross Road, Gate No. 7	--
60	F/N	Laxmibai Kelkar Road (Gandhi Market)	--
61		R.A. Kidwai Road, Wadala	Gate No. 4, Mangale Society
62		Dadar T.T. Circle	Junction of Tilak Rd & Jama Jamshet Rd
63		Vachharaj Lane	--
64		Mukhyadhapak Bhavan Road No. 6, Sion	--
65		Rajyogi Jaimai Singh Road	Gurunanak School
66		Bhau Daji Road (below bridge)	--
67		Hindu Colony, Lakhamshi Napoo Road	--
68		Road No. 16, Near LeprosyHospital	
69		Jayshankar Yagnik Road	Behind Gandhi Market
70		Shanti Nagar Slum	--
71	Koraba Mithagar Slum	--	
72	G/S	N.M. Joshi Marg	Jagusheth Chawl , near curry road west junction.
73		Fitwala Road	Nr. Elphiston Rd Rly Stn
74		Balushet Madurkar Marg	--
75		N.M. Joshi Marg	Gawade Chowk to Railway Workshop
76		Sakhubai Mohite Marg	N.M. Joshi Marg, B.D.D. Chawls
77		Pandurang Budhkar Marg	Near Gopal Nagar
78		Worli Naka	Near Prem Nagar
79		S.S. Amritwar Marg	Near Nehru Nagar
80		Khan Abdul Gaffar Khan Road	Near Godrej
81	G/N	T.H. Kataria Marg (East)	--
82		Veer Savarkar & L.J. Road Junction	Near Mahim Church
83		M.G Rd., Dharavi	Dharavi transit camp, Laxmibaug
84		Andhra valley Rd.	Matunga labour camp.

**The reporting protocol for interruption of Electric supply due to
System Failure /Disaster**

Sr. No.	Nature of Off Supply/Disaster	Informing person	To be informed	Remark
1	Off supply due to service cut out burnt, service failure, individual Off Supply, Partial Area/ Area off supply due to distributor/ service cable failure, 11/22/33 kV feeder tripping.	Fuse Controller, Fault Controller, Supervisory/ System controller	Regular Off Supply crew i.e. Fuseman, Mains Engineer & Fault Engineer.	Immediate action for restoration of supply by all concerned.
2	Off supply after 2 hrs. upto 4 hrs due to service cut out burnt, service failure, individual Off Supply, Partial Area/ Area off supply due to distributor/ service cable failure, 11/22/33 kV feeder tripping.	Supervisory/ System controller	Concerned Divisional Engineers and above.	Concerned Divisional Engineer will post the details on VIP Whatsapp Group.
3	Off supply above 4 hrs due to service cut out burnt, service failure, individual Off Supply, Partial Area/ Area off supply due to distributor /service cable failure, 11/22/33 kV feeder tripping.	CEM	AGMES, DGMES.	Concerned Divisional Engineer will post the details on VIP Whatsapp Group.
4	Switching OFF DSS due to water logging/ flooding for safety measures.	CEM	AGMES, DGMES, GM	Concerned Divisional Engineer will post the details on VIP Whatsapp Group.

5	Building collapse / Fire to building / Fatal/ Non-Fatal electrical accident.	Supervisory/ System controller	Concerned Divisional Engineers and above.	Concerned Divisional Engineer will post the details on VIP Whatsapp Group.
6	Building collapse / Fire to building / Fatal/ Non-Fatal electrical accident.	CEM	AGMES, DGMES, GM	Concerned Divisional Engineer will post the details on VIP Whatsapp Group.
7	Major Off Supply due to multiple faults at one DSS / nearby DSSs resulting in DSS hanging.	Supervisory/ System controller	Concerned Divisional Engineers and above.	Concerned Divisional Engineer will post the details on VIP Whatsapp Group.
8	Major Off Supply due to multiple faults at one DSS / nearby DSSs resulting in DSS hanging.	CEM	AGMES, DGMES, GM	Concerned Divisional Engineer will post the details on VIP Whatsapp Group.
9	TPC failure /Grid failure / Off Supply for entire south/ north /entire Mumbai city due to any type of Disaster.	Supervisory/ System controller	Concerned Divisional Engineers and above.	Concerned Divisional Engineer will post the details on VIP Whatsapp Group.
10	TPC failure /Grid failure / Off Supply for entire south/ north /entire Mumbai city due to any type of Disaster.	CEM	AGMES, DGMES, GM	Concerned Divisional Engineer will post the details on VIP Whatsapp Group.
11	TPC failure /Grid failure / Off Supply for entire south/ north /entire Mumbai city due to any type of Disaster.	GM	Municipal Commissioner, Energy Minister, Chief Minister	Concerned Divisional Engineer will post the details on VIP Whatsapp Group.

**Names & Contact nos. of the Officers of Electric Supply Branch
to be contacted during the emerge / disastrous conditions
Operation & Maintenance Department (OFF Supply)**

Name	Designation	Coverage Area	Contact No.	Mobile No. / Resi. No / Email id.
R.U.Patil	Chief Engineer (Maintenance)	HOD for off supply Complaints for Mumbai City	22840942 22883280	9869354174
			cem@bestundertaking.com	
Vacant	Deputy Chief Engineer Distribution South	For Mumbai City (South Division) Off Supply Complaints	22154428 22153486 Ext. 102	----
			dceds@bestundertaking.com	
P.P.Kulkarni	Deputy Chief Engineer Distribution North	For Mumbai City (North Division) Off Supply Complaints	24102929	9869451826
			dcedn@bestundertaking.com	
S.R.Chavan	Divisional Engineer Operation & Maintenance Central North	Byculla, Lalbaug, Mazgaon, Reay Road, Haji Ali, Worli Gaon, Lower Parel, Mahalaxmi, Mumbai Central, Aurther Road	24121740 24120301	9819908070
			demcn@bestundertaking.com	
P.D.Gunjal	Divisional Engineer Operation & Maintenance North East	Parel, Kalachowki, Dadar, Kings Circle, Wadala, Antop Hill, Gandhi Market, Sion- Chunaabhatti	24016611 24012951	9869137380
			demne@bestundertaking.com	
N.P.Jagaldas	Divisional Engineer Operation & Maintenance North West	Prabhadevi, Parel ST depot, Kabutar Khana, Shivaji Park, Shitaladevi, Mahim Couseway, Dharavi , Matunga	24120301	9820654161
			demnw@bestundertaking.com	
N.M.Herlekar	Divisional Engineer Operation & Maintenance South	Navy Nagar, Nariman Point, Backbay, Marine Lines, Colaba, Crawford Market	22154428	9869410254
			dems@bestundertaking.com	
A.V.Naik	Divisional Engineer Operation & Maintenance Central South	Mo.Ali Rd, Girgaon, Mumbadevi, Malabar Hill, Nepeasea Rd, Grant Rd, Khetwadi, Dockyard Rd, Nagpada	22073875	9869427564
			demcs@bestundertaking.com	

**Names & Contact nos. of the Officers of Electric Supply Branch
to be contacted during the emerge / disastrous conditions
Customer Care Department (Billing Complaints)**

Name	Designation	Coverage Area	Contact No.	Mobile No. / Resi. No / Email id.
R.D.Patsute	Chief Engineer Customer Care	HOD Customer Care Dept	22799563	9869405910
			cecc@bestundertaking.com	
N.V.Bhandari	Deputy Chief Engineer Customer Care South	A, B, C, & D Ward	22799512 228556262 Ext. No.503	9769081149
			dceccs@bestundertaking.com	
Smt. S.A.Rege (Due for superannuation w.e.f.01.06.2021)	Deputy Chief Engineer Customer Care North East & North West	E, FN, FS, GN, GS Ward	24194681 24146262 Ext. 681	9869925160
			dceccne@bestundertaking.com & dceccnw@bestundertaking.com	

Street Lighting Department (for Street Lighting Complaints)

Name	Designation	Coverage Area	Contact No.	Mobile No. / Resi. No / Email id.
G.G.Chandankar	Deputy Chief Engineer Street Lighting dept,	HOD Street Lighting	24116023 Ext. 503	9757435560
			dcesl@bestundertaking.com	
D.N.Pawar	Divisional Engineer Street Lighting	In-charge of Street Lighting dept.	24101691 24123969 Ext. 501	9870383684
			23781839 23711942 Ext.801	